



## UK Office

### Everest Biotech Ltd

Cherwell Innovation Centre  
77 Heyford Park  
Upper Heyford  
Oxfordshire  
OX25 5HD  
UK

Enquiries:

[info@everestbiotech.com](mailto:info@everestbiotech.com)

Sales:

[sales@everestbiotech.com](mailto:sales@everestbiotech.com)

Tech support:

[support@everestbiotech.com](mailto:support@everestbiotech.com)

Tel: +44 (0)1869 238326

Fax: +44 (0)1869 238327

## US Office

### Everest Biotech c/o Abcore

405 Maple Street, Suite A106  
Ramona,  
CA 92065  
USA

Inquiries:

[info@everestbiotech.com](mailto:info@everestbiotech.com)

Sales:

[usasales@everestbiotech.com](mailto:usasales@everestbiotech.com)

Tech support:

[support@everestbiotech.com](mailto:support@everestbiotech.com)

Tel: 888-320-4628 (toll-free)

Fax: 888-841-9041

[www.everestbiotech.com](http://www.everestbiotech.com)

**Research Use Only. Not for  
diagnostic or therapeutic use.**

## EB10148 - Goat Anti-SLC2A4 / GLUT4 Antibody

Size: 100µg specific antibody in 200µl



### Target Protein

**Principal Names:** glucose transporter 4, GLUT4, insulin-responsive glucose transporter type 4, solute carrier family 2 (facilitated glucose transporter), member 4, SLC2A4

**Official Symbol:** SLC2A4

**Accession Number(s):** NP\_001033.1

**Human GeneID(s):** [6517](#)

**Non-Human GeneID(s):** 20528 (mouse), 25139 (rat)

### Immunogen

Peptide with sequence C-TELEYLGPDEND, from the C Terminus of the protein sequence according to NP\_001033.1.

Please note the [peptide](#) is available for sale.

### Purification and Storage

Purified from goat serum by ammonium sulphate precipitation followed by antigen affinity chromatography using the immunizing peptide.

Supplied at 0.5 mg/ml in Tris saline, 0.02% sodium azide, pH7.3 with 0.5% bovine serum albumin.

Aliquot and store at -20°C. Minimize freezing and thawing.

### Applications Tested

**Peptide ELISA:** antibody detection limit dilution 1:16000.

**Western blot:** Approx 40-45kDa band observed in Mouse Heart lysates (calculated MW of 54.8kDa according to Human NP\_001033.1 and Mouse NP\_033230.2). The observed molecular weight corresponds to earlier findings in literature with different antibodies (Fischer et al, J Biol Chem. 1997 Mar 14;272(11):7085-92.; PMID: 9054401).

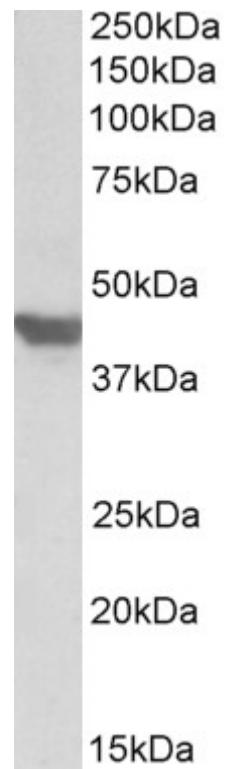
Recommended concentration: 0.3-1µg/ml. Primary incubation was 1 hour.

**IHC:** Paraffin embedded Human Skeletal Muscle. Recommended concentration: 3.75µg/ml.

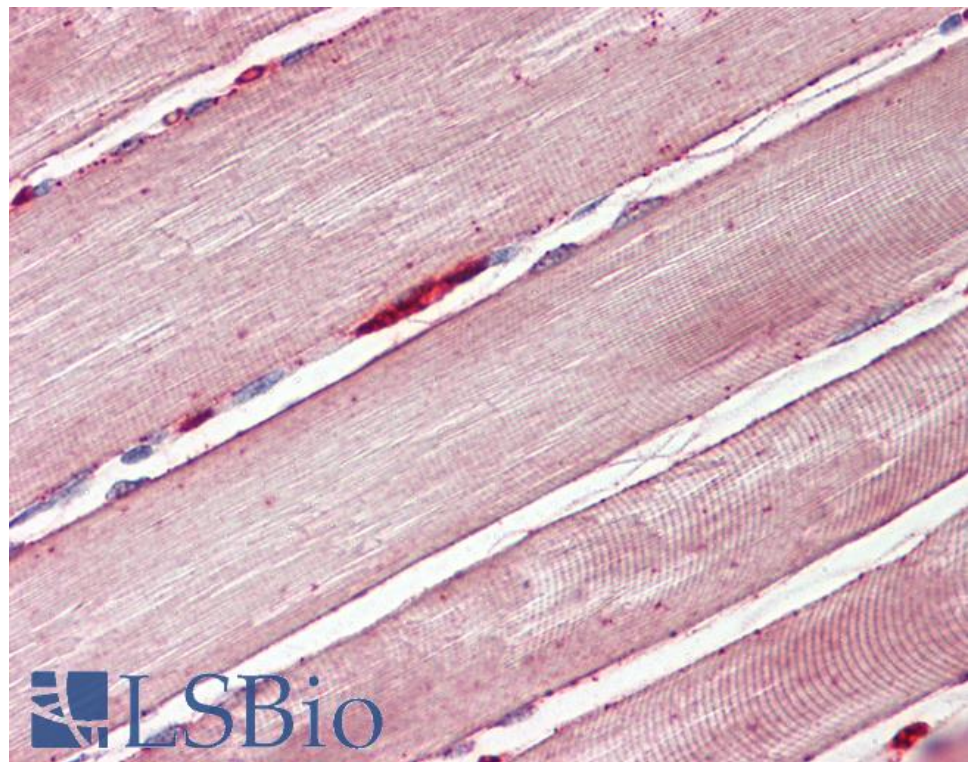
### Species Reactivity

**Tested:** Human, Mouse

**Expected from sequence similarity:** Human, Mouse, Rat, Cow, Pig



EB10148 (1 $\mu$ g/ml) staining of Mouse Heart lysate (35 $\mu$ g protein in RIPA buffer). Detected by chemiluminescence.



EB10148 (3.75 $\mu$ g/ml) staining of paraffin embedded Human Skeletal Muscle. Steamed antigen retrieval with citrate buffer pH 6, AP-staining.