



International Office

Everest Biotech Ltd

Vector Laboratories, Inc.
6737 Mowry Ave
Newark, CA 94560
United States

Customer Service:

customerservice@vectorlabs.com

Technical Service:

technical@vectorlabs.com

Tel: +1 (800) 227-6666

www.everestbiotech.com

**Research Use Only. Not for
diagnostic or therapeutic use.**

EB12056 - Goat Anti-SLC40A1 (aa245-259) Antibody

Size: 100µg specific antibody in 200µl



Target Protein

Principal Names: SLC40A1, solute carrier family 40 (iron-regulated transporter), member 1, FPN1, HFE4, IREG1, MST079, MTP1, SLC11A3, iron regulated gene 1, putative ferroportin 1 variant IIIB, solute carrier family 11 (proton-coupled divalent metal ion transporters), member 3, solute carrier family 40 member 1

Official Symbol: SLC40A1

Accession Number(s): NP_055400.1

Human GeneID(s): [30061](#)

Immunogen

Peptide with sequence C-ELKQLNLHKDTEPKP, from the internal region of the protein sequence according to NP_055400.1.

Please note the [peptide](#) is available for sale.

Purification and Storage

Purified from goat serum by ammonium sulphate precipitation followed by antigen affinity chromatography using the immunizing peptide.

Supplied at 0.5 mg/ml in Tris saline, 0.02% sodium azide, pH7.3 with 0.5% bovine serum albumin.

Aliquot and store at -20°C. Minimize freezing and thawing.

Applications Tested

Peptide ELISA: antibody detection limit dilution 1:128000.

Western blot: Preliminary testing showed a band at approx 60kDa in Human Breast and Colon lysate after 1-2µg/ml antibody staining (calculated MW of 62.5kDa according to NP_055400.1). Primary incubation 1 hour at room temperature.

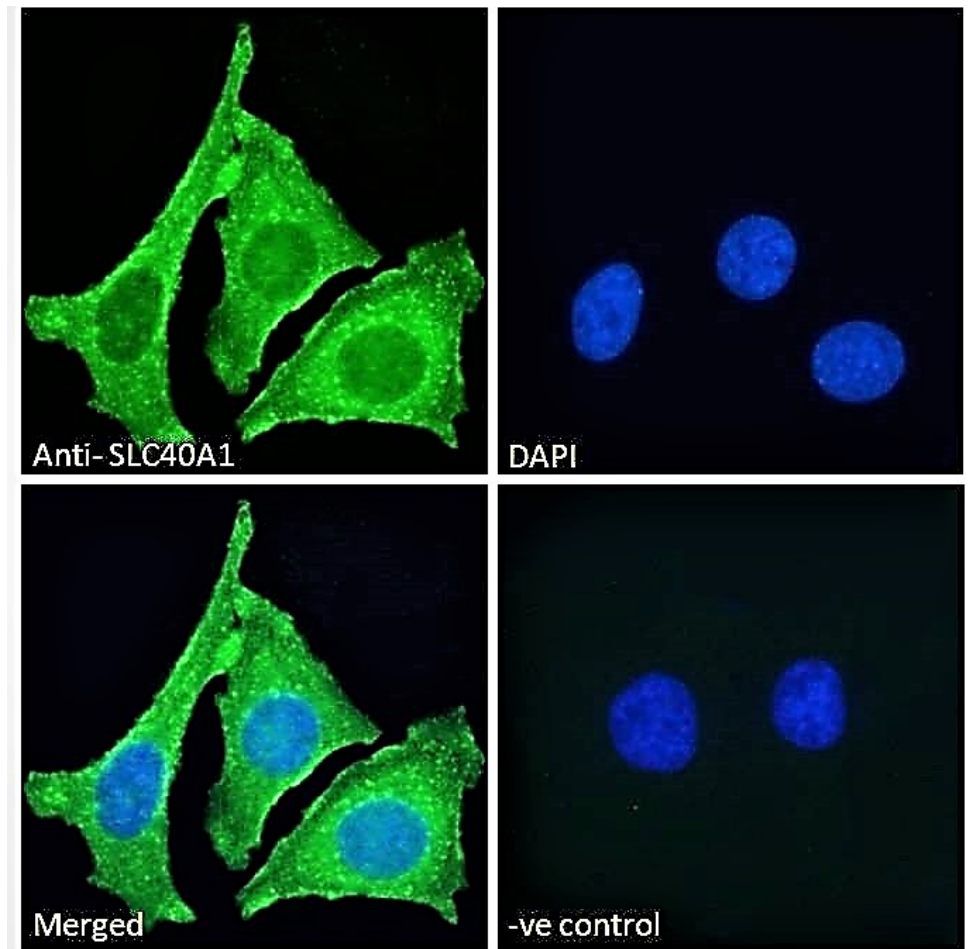
Immunofluorescence: Strong expression of the protein seen in the cytoplasm and plasma membranes of HeLa cells. Recommended concentration: 10µg/ml.

Flow Cytometry: Flow cytometric analysis of HeLa cells. Recommended concentration: 10ug/ml.

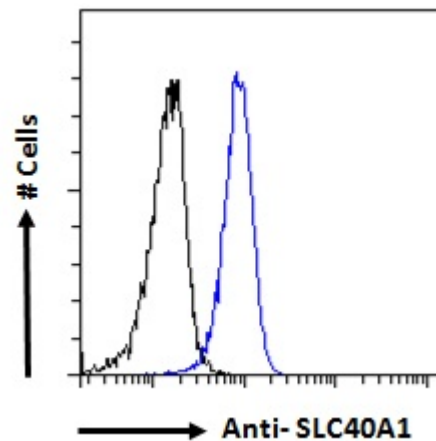
Species Reactivity

Tested: Human

Expected from sequence similarity: Human



EB12056 Immunofluorescence analysis of paraformaldehyde fixed HeLa cells, permeabilized with 0.15% Triton. Primary incubation 1hr (10ug/ml) followed by Alexa Fluor 488 secondary antibody (2ug/ml), showing cytoplasmic and plasma membrane staining. The nuclear stain is DAPI (blue). Negative control: Unimmunized goat IgG (10ug/ml) followed by Alexa Fluor 488 secondary antibody (2ug/ml).



EB12056 Flow cytometric analysis of paraformaldehyde fixed HeLa cells (blue line), permeabilized with 0.5% Triton. Primary incubation 1hr (10ug/ml) followed by Alexa Fluor 488 secondary antibody (1ug/ml). IgG control: Unimmunized goat IgG (black line) followed by Alexa Fluor 488 secondary antibody.