



## International Office

### Everest Biotech Ltd

Vector Laboratories, Inc.  
6737 Mowry Ave  
Newark, CA 94560  
United States

Customer Service:

[customerservice@vectorlabs.com](mailto:customerservice@vectorlabs.com)

Technical Service:

[technical@vectorlabs.com](mailto:technical@vectorlabs.com)

Tel: +1 (800) 227-6666

[www.everestbiotech.com](http://www.everestbiotech.com)

**Research Use Only. Not for  
diagnostic or therapeutic use.**

## EB09191 - Goat Anti-SLC47A1 Antibody

Size: 100µg specific antibody in 200µl



### Target Protein

**Principal Names:** SLC47A1, solute carrier family 47, member 1, FLJ10847, MATE1, MGC64822, multidrug and toxin extrusion 1

**Official Symbol:** SLC47A1

**Accession Number(s):** NP\_060712.2

**Human GeneID(s):** [55244](#)

### Immunogen

Peptide with sequence C-PEHPQDGAKLSRKQ, from the internal region (near C Terminus) of the protein sequence according to NP\_060712.2.

Please note the [peptide](#) is available for sale.

### Purification and Storage

Purified from goat serum by ammonium sulphate precipitation followed by antigen affinity chromatography using the immunizing peptide.

Supplied at 0.5 mg/ml in Tris saline, 0.02% sodium azide, pH7.3 with 0.5% bovine serum albumin.

Aliquot and store at -20°C. Minimize freezing and thawing.

### Applications Tested

**Peptide ELISA:** antibody detection limit dilution 1:64000.

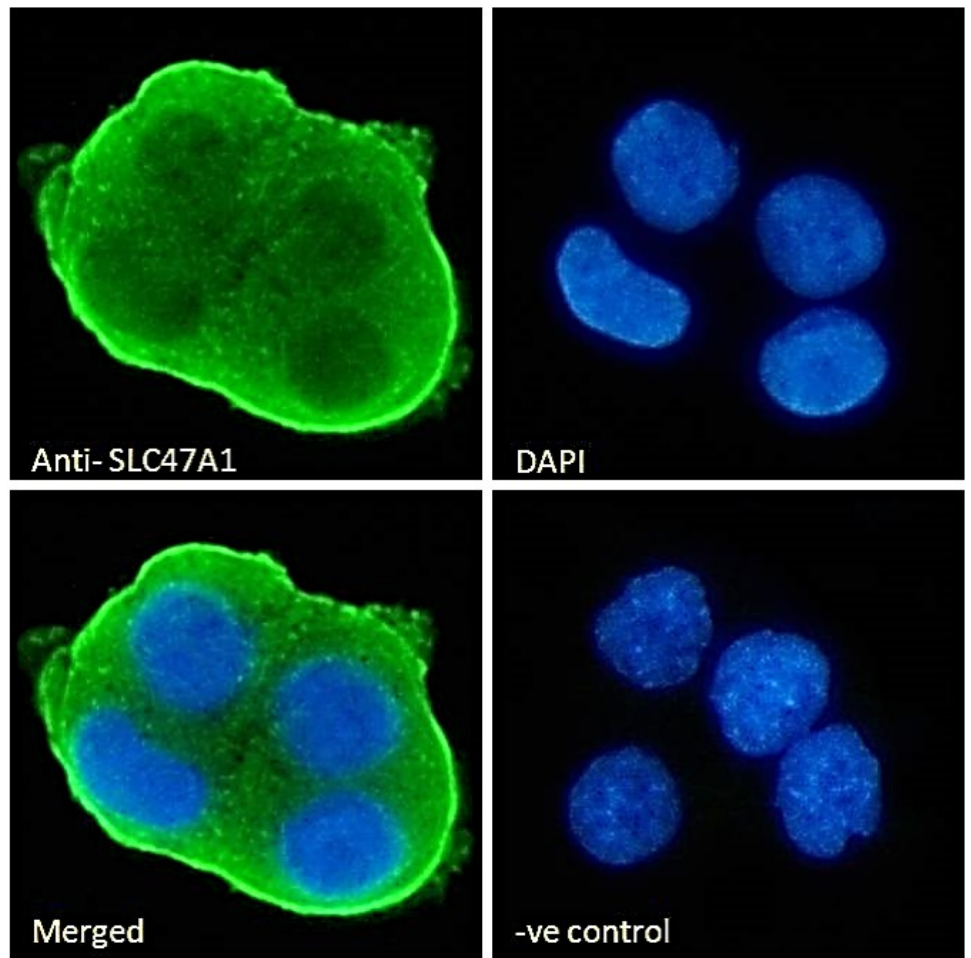
**Western blot:** Approx. 60-65kDa band observed in Human Liver lysates (calculated MW of 61.9kDa according to NP\_060712.2). This band was successfully blocked by incubation with the immunizing peptide. Recommended concentration: 0.1-0.3µg/ml. Primary incubation 1 hour at room temperature.

**Immunofluorescence:** Strong expression of the protein seen in the plasma membrane of HepG2 cells. Recommended concentration: 10µg/ml.

### Species Reactivity

**Tested:** Human

**Expected from sequence similarity:** Human



EB09191 Immunofluorescence analysis of paraformaldehyde fixed HepG2 cells, permeabilized with 0.15% Triton. Primary incubation 1hr (10ug/ml) followed by Alexa Fluor 488 secondary antibody (2ug/ml), showing membrane staining. The nuclear stain is DAPI (blue). Negative control: Unimmunized goat IgG (10ug/ml) followed by Alexa Fluor 488 secondary antibody (2ug/ml).



EB09191 (0.1µg/ml) staining of Human Liver lysate (35µg protein in RIPA buffer). Detected by chemiluminescence.