



International Office

Everest Biotech Ltd

Vector Laboratories, Inc.
6737 Mowry Ave
Newark, CA 94560
United States

Customer Service:

customerservice@vectorlabs.com

Technical Service:

technical@vectorlabs.com

Tel: +1 (800) 227-6666

www.everestbiotech.com

**Research Use Only. Not for
diagnostic or therapeutic use.**

EB10661 - Goat Anti-SLC47A2 Antibody

Size: 100µg specific antibody in 200µl



Target Protein

Principal Names: SLC47A2, solute carrier family 47, member 2, FLJ31196, MATE2, MATE2-B, MATE2-K, MATE2K, H+/organic cation antiporter, MATE-2, hMATE-2, kidney-specific H(+)/organic cation antiporter, multidrug and toxin extrusion 2, multidrug and toxin

Official Symbol: SLC47A2

Accession Number(s): NP_690872.2; NP_001093116.1

Human GeneID(s): [146802](#)

Important Comments: This antibody is expected to recognize both reported isoforms (NP_690872.2; NP_001093116.1).

Immunogen

Peptide with sequence SECHVDFFRTPEEAH, from the internal region (near C terminus) of the protein sequence according to NP_690872.2; NP_001093116.1.

Please note the [peptide](#) is available for sale.

Purification and Storage

Purified from goat serum by ammonium sulphate precipitation followed by antigen affinity chromatography using the immunizing peptide.

Supplied at 0.5 mg/ml in Tris saline, 0.02% sodium azide, pH7.3 with 0.5% bovine serum albumin.

Aliquot and store at -20°C. Minimize freezing and thawing.

Applications Tested

Peptide ELISA: antibody detection limit dilution 1:32000.

Western blot: Approx 60kDa band observed in Human Testis lysates (calculated MW of 61.0kDa according to NP_001093116.1). Recommended concentration: 0.1-1µg/ml.

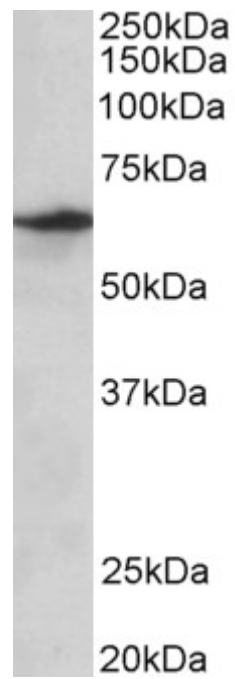
Primary incubation was 1 hour.

IHC: Paraffin embedded Human Kidney. Recommended concentration: 5µg/ml.

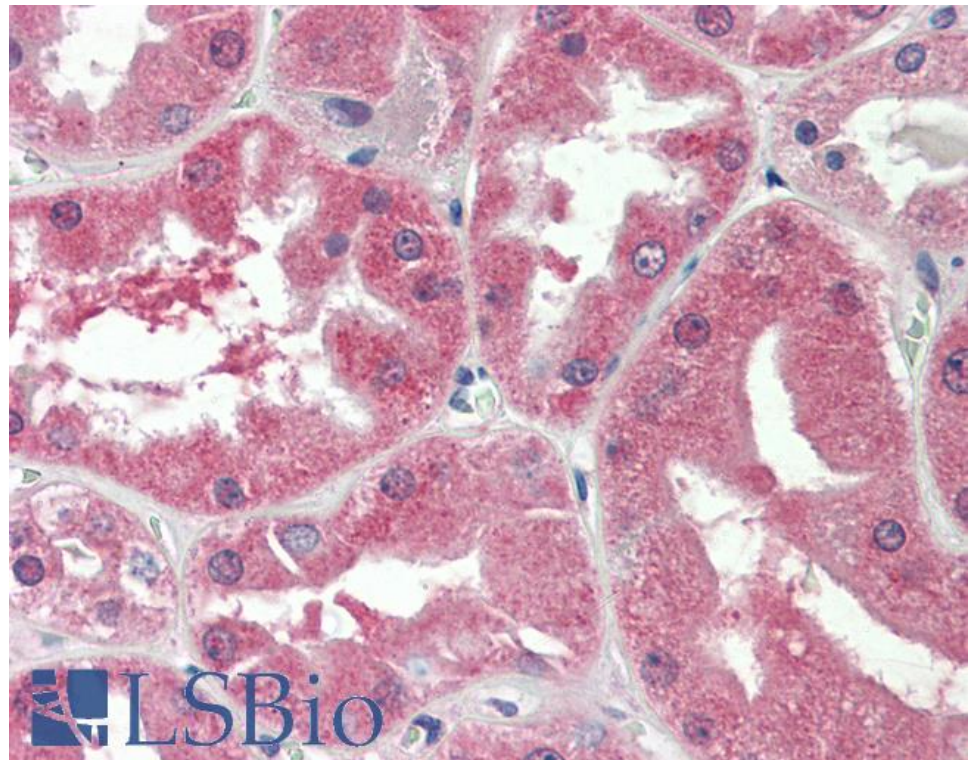
Species Reactivity

Tested: Human

Expected from sequence similarity: Human



EB10661 (0.3 μ g/ml) staining of Human Testis lysate (35 μ g protein in RIPA buffer). Detected by chemiluminescence.



EB10661 (5 μ g/ml) staining of paraffin embedded Human Kidney. Steamed antigen retrieval with citrate buffer pH 6, AP-staining.