

## UK Office

### Everest Biotech Ltd

Cherwell Innovation Centre  
77 Heyford Park  
Upper Heyford  
Oxfordshire  
OX25 5HD  
UK

Enquiries:

[info@everestbiotech.com](mailto:info@everestbiotech.com)

Sales:

[sales@everestbiotech.com](mailto:sales@everestbiotech.com)

Tech support:

[support@everestbiotech.com](mailto:support@everestbiotech.com)

Tel: +44 (0)1869 238326

[www.everestbiotech.com](http://www.everestbiotech.com)

**Research Use Only. Not for  
diagnostic or therapeutic use.**

## EB09681 - Goat Anti-SLC4A11 / BTR1 Antibody

Size: 100µg specific antibody in 200µl



### Target Protein

**Principal Names:** SLC4A11, solute carrier family 4, sodium borate transporter, member 11, BTR1, CDPD, CDPD1, CHED2, MGC126418, MGC126419, NABC1, dJ79416.2, OTTHUMP00000030097, bicarbonate transporter related protein 1, sodium-coupled borate cotransporter 1, solute carrier family 4 member 11, solute carrier family 4, sodium bicarbonate transporter-like, member 11

**Official Symbol:** SLC4A11

**Accession Number(s):** NP\_114423.1

**Human GeneID(s):** [83959](#)

**Non-Human GeneID(s):** 269356 (mouse), 311423 (rat)

### Immunogen

Peptide with sequence C-HTSRKYLKLNFKKEE, from the internal region of the protein sequence according to NP\_114423.1.

Please note the [peptide](#) is available for sale.

### Purification and Storage

Purified from goat serum by ammonium sulphate precipitation followed by antigen affinity chromatography using the immunizing peptide.

Supplied at 0.5 mg/ml in Tris saline, 0.02% sodium azide, pH7.3 with 0.5% bovine serum albumin.

Aliquot and store at -20°C. Minimize freezing and thawing.

### Applications Tested

**Peptide ELISA:** antibody detection limit dilution 1:32000.

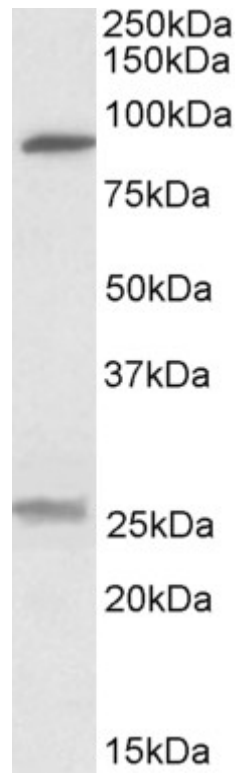
**Western blot:** Approx 90kDa band observed in Human Kidney lysates (calculated MW of 99.6kDa according to NP\_114423.1). Recommended concentration: 0.3-1µg/ml. Primary incubation was 1 hour. An additional band of unknown identity was also consistently observed at 26kDa. This band was successfully blocked by incubation with the immunizing peptide.

**IHC:** Paraffin embedded Human Kidney. Recommended concentration: 3.75µg/ml.

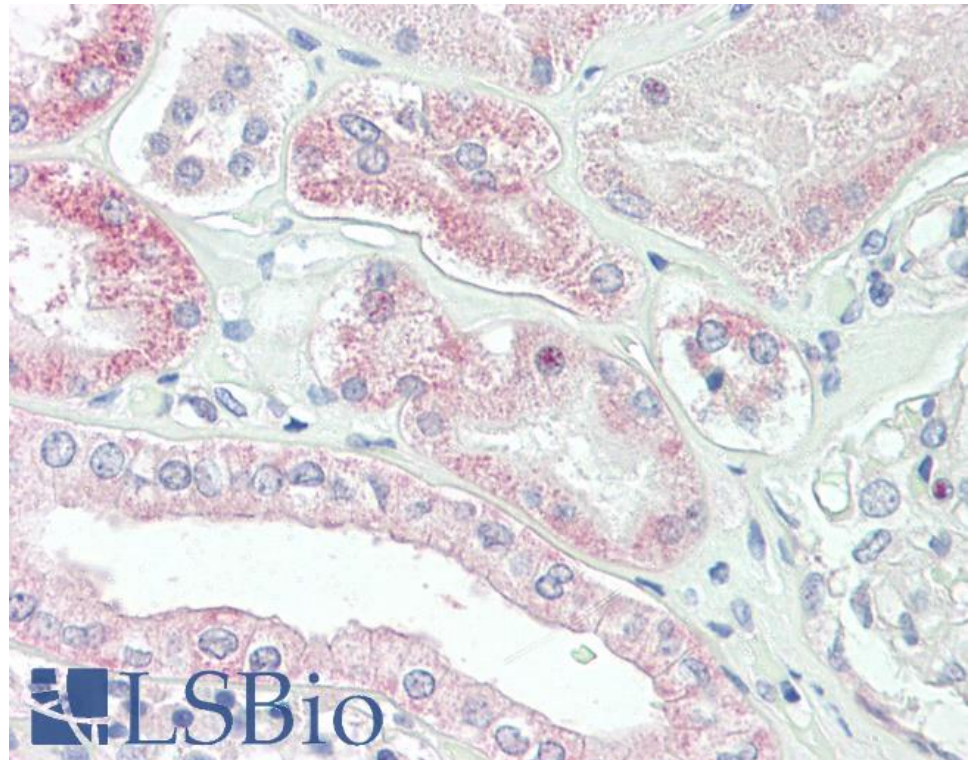
### Species Reactivity

**Tested:** Human

**Expected from sequence similarity:** Human, Mouse, Rat, Dog, Cow



EB09681 (0.3 $\mu$ g/ml) staining of Human Kidney lysate (35 $\mu$ g protein in RIPA buffer). Detected by chemiluminescence.



EB09681 (3.75 $\mu$ g/ml) staining of paraffin embedded Human Kidney. Steamed antigen retrieval with citrate buffer pH 6, AP-staining.