

UK Office

Everest Biotech Ltd

Cherwell Innovation Centre
77 Heyford Park
Upper Heyford
Oxfordshire
OX25 5HD
UK

Enquiries:

info@everestbiotech.com

Sales:

sales@everestbiotech.com

Tech support:

support@everestbiotech.com

Tel: +44 (0)1869 238326

www.everestbiotech.com

**Research Use Only. Not for
diagnostic or therapeutic use.**

EB11236 - Goat Anti-Slc5a1 (rat) Antibody

Size: 100µg specific antibody in 200µl



Target Protein

Principal Names: high affinity sodium-glucose cotransporter, MGC93553, Na(+)/glucose cotransporter 1, SglT1, sodium/glucose cotransporter 1, solute carrier family 5 (sodium/glucose cotransporter), member 1, solute carrier family 5, member 1, Solute carrier family 5, member alpha 1 (Na+/glucose cotransporter), Slc5a1

Official Symbol: Slc5a1

Accession Number(s): NP_037165.1

Non-Human GeneID(s): 25552 (rat)

Immunogen

Peptide with sequence C-KDTIEIDAEAPQKEK, from the internal region of the protein sequence according to NP_037165.1.

Please note the [peptide](#) is available for sale.

Purification and Storage

Purified from goat serum by ammonium sulphate precipitation followed by antigen affinity chromatography using the immunizing peptide.

Supplied at 0.5 mg/ml in Tris saline, 0.02% sodium azide, pH7.3 with 0.5% bovine serum albumin.

Aliquot and store at -20°C. Minimize freezing and thawing.

Applications Tested

Peptide ELISA: antibody detection limit dilution 1:32000.

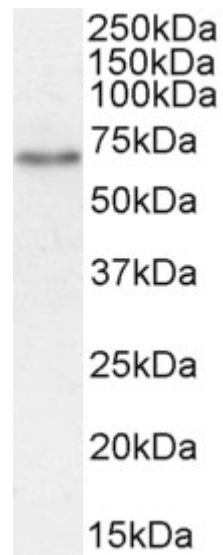
Western blot: Approx 70kDa band observed in Rat Kidney lysates (calculated MW of 72.1kDa according to NP_037165.1). Recommended concentration: 0.3-2µg/ml. Primary incubation 1 hour at room temperature.

IHC: Paraffin embedded Rat Kidney. Recommended concentration: 10µg/ml.

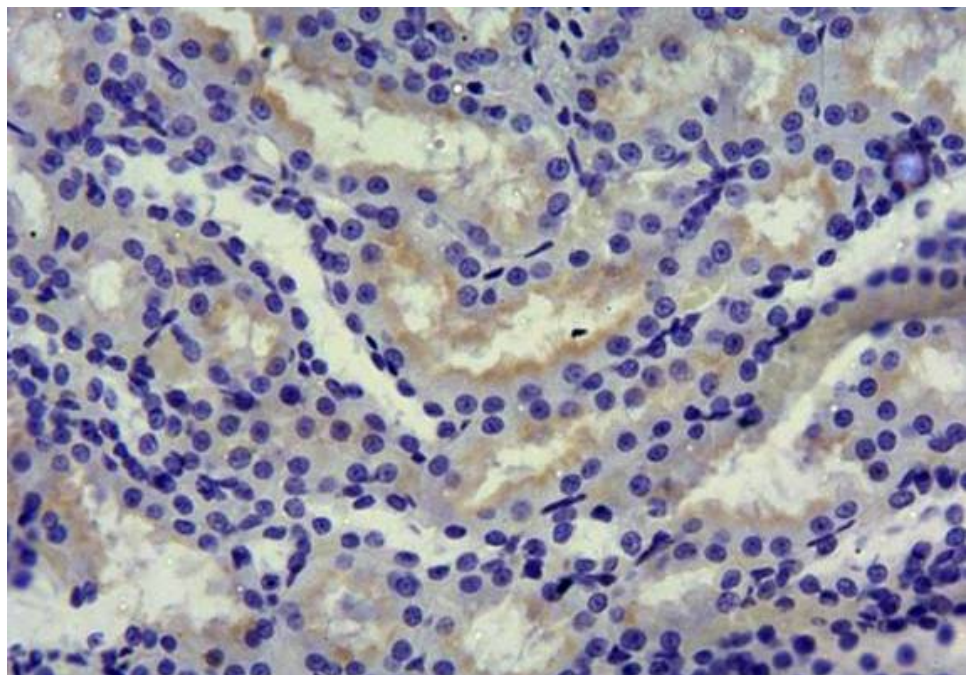
Species Reactivity

Tested: Rat

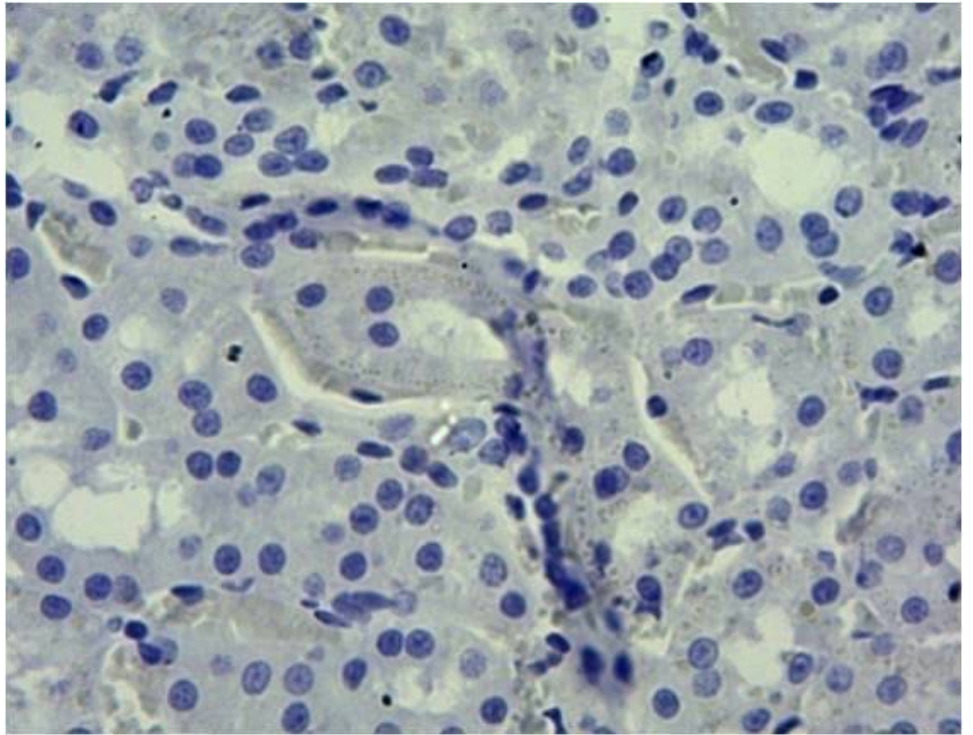
Expected from sequence similarity: Rat



EB11236 (1µg/ml) staining of Rat Kidney lysate (35µg protein in RIPA buffer). Detected by chemiluminescence.



EB11236 (10µg/ml): Staining of paraffin embedded Rat Kidney. Heat induced antigen retrieval with citrate buffer pH 6, HRP-Staining (1:500).



EB11236 Negative Control showing staining of paraffin embedded Rat Kidney, with no primary antibody.