

UK Office

Everest Biotech Ltd

Cherwell Innovation Centre
77 Heyford Park
Upper Heyford
Oxfordshire
OX25 5HD
UK

Enquiries:

info@everestbiotech.com

Sales:

sales@everestbiotech.com

Tech support:

support@everestbiotech.com

Tel: +44 (0)1869 238326

www.everestbiotech.com

**Research Use Only. Not for
diagnostic or therapeutic use.**

EB06743 - Goat Anti-SLC6A4 / 5HTT / SERT Antibody

Size: 100µg specific antibody in 200µl



Target Protein

Principal Names: SLC6A4, SERT, solute carrier family 6 (neurotransmitter transporter, serotonin), member 4, HGNC:11050, 5-HTT, HTT, OCD1, hSERT, 5-hydroxytryptamine transporter, 5HT transporter, Na⁺/Cl⁻ dependent serotonin transporter, serotonin transporter, sodium-dependent serotonin transporter, solute carrier family 6 member 4, 5-HTTLPR, OTTHUMP00000163633

Official Symbol: SLC6A4

Accession Number(s): NP_001036.1

Human GeneID(s): [6532](#)

Immunogen

Peptide with sequence C-LHQGERETWGK, from the internal region of the protein sequence according to NP_001036.1.

Please note the [peptide](#) is available for sale.

Purification and Storage

Purified from goat serum by ammonium sulphate precipitation followed by antigen affinity chromatography using the immunizing peptide.

Supplied at 0.5 mg/ml in Tris saline, 0.02% sodium azide, pH7.3 with 0.5% bovine serum albumin.

Aliquot and store at -20°C. Minimize freezing and thawing.

Applications Tested

Peptide ELISA: antibody detection limit dilution 1:32000.

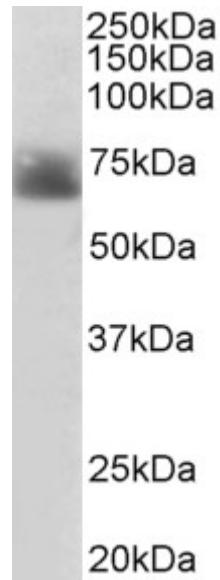
Western blot: Approx 70-75kDa band observed in Human Colon lysates (calculated MW of 70.3kDa according to NP_001036.1). Recommended concentration: 1-3µg/ml. Primary incubation 1 hour at room temperature.

Immunofluorescence: Strong expression of the protein seen in vesicles of HepG2 cells. Recommended concentration: 10µg/ml.

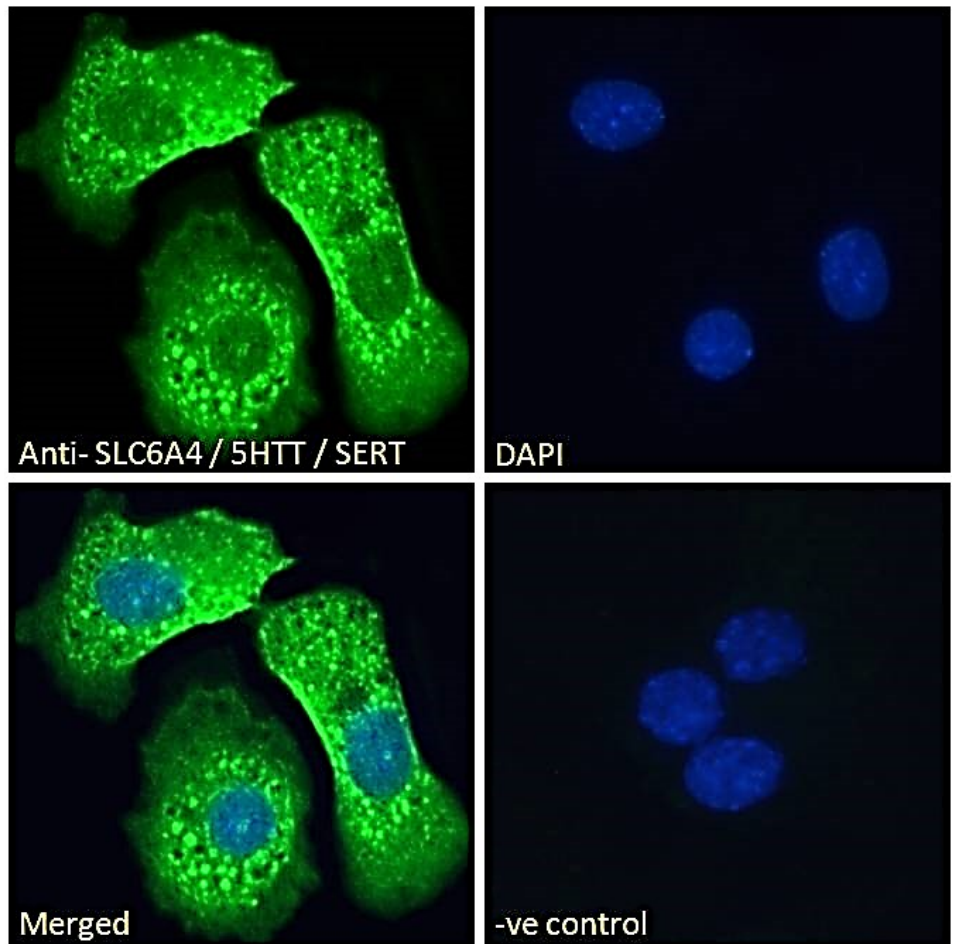
Species Reactivity

Tested: Human

Expected from sequence similarity: Human, Mouse, Rat



EB06743 (2 μ g/ml) staining of Human Colon lysate (35 μ g protein in RIPA buffer). Detected by chemiluminescence.



EB06743 Immunofluorescence analysis of paraformaldehyde fixed HepG2 cells, permeabilized with 0.15% Triton. Primary incubation 1hr (10 μ g/ml) followed by Alexa Fluor 488 secondary antibody (2 μ g/ml), showing vesicle staining. The nuclear stain is DAPI (blue). Negative control: Unimmunized goat IgG (10 μ g/ml) followed by Alexa Fluor 488 secondary antibody (2 μ g/ml).