



## UK Office

### Everest Biotech Ltd

Cherwell Innovation Centre  
77 Heyford Park  
Upper Heyford  
Oxfordshire  
OX25 5HD  
UK

Enquiries:

[info@everestbiotech.com](mailto:info@everestbiotech.com)

Sales:

[sales@everestbiotech.com](mailto:sales@everestbiotech.com)

Tech support:

[support@everestbiotech.com](mailto:support@everestbiotech.com)

Tel: +44 (0)1869 238326

Fax: +44 (0)1869 238327

## US Office

### Everest Biotech c/o Abcore

405 Maple Street, Suite A106  
Ramona,  
CA 92065  
USA

Inquiries:

[info@everestbiotech.com](mailto:info@everestbiotech.com)

Sales:

[usasales@everestbiotech.com](mailto:usasales@everestbiotech.com)

Tech support:

[support@everestbiotech.com](mailto:support@everestbiotech.com)

Tel: 888-320-4628 (toll-free)

Fax: 888-841-9041

[www.everestbiotech.com](http://www.everestbiotech.com)

**Research Use Only. Not for  
diagnostic or therapeutic use.**

## EB06743 - Goat Anti-SLC6A4 / 5HTT / SERT Antibody

Size: 100µg specific antibody in 200µl



### Target Protein

**Principal Names:** SLC6A4, SERT, solute carrier family 6 (neurotransmitter transporter, serotonin), member 4, HGNC:11050, 5-HTT, HTT, OCD1, hSERT, 5-hydroxytryptamine transporter, 5HT transporter, Na<sup>+</sup>/Cl<sup>-</sup> dependent serotonin transporter, serotonin transporter, sodium-dependent serotonin transporter, solute carrier family 6 member 4, 5-HTTLPR, OTTHUMP00000163633

**Official Symbol:** SLC6A4

**Accession Number(s):** NP\_001036.1

**Human GenelD(s):** [6532](#)

### Immunogen

Peptide with sequence C-LHQGERETWGK, from the internal region of the protein sequence according to NP\_001036.1.

Please note the [peptide](#) is available for sale.

### Purification and Storage

Purified from goat serum by ammonium sulphate precipitation followed by antigen affinity chromatography using the immunizing peptide.

Supplied at 0.5 mg/ml in Tris saline, 0.02% sodium azide, pH7.3 with 0.5% bovine serum albumin.

Aliquot and store at -20°C. Minimize freezing and thawing.

### Applications Tested

**Peptide ELISA:** antibody detection limit dilution 1:32000.

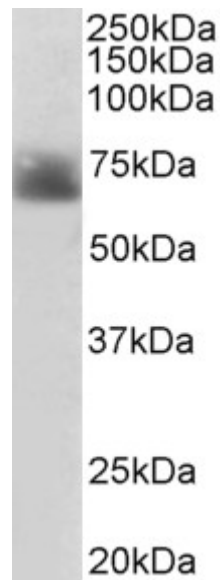
**Western blot:** Approx 70-75kDa band observed in Human Colon lysates (calculated MW of 70.3kDa according to NP\_001036.1). Recommended concentration: 1-3µg/ml. Primary incubation 1 hour at room temperature.

**Immunofluorescence:** Strong expression of the protein seen in vesicles of HepG2 cells. Recommended concentration: 10µg/ml.

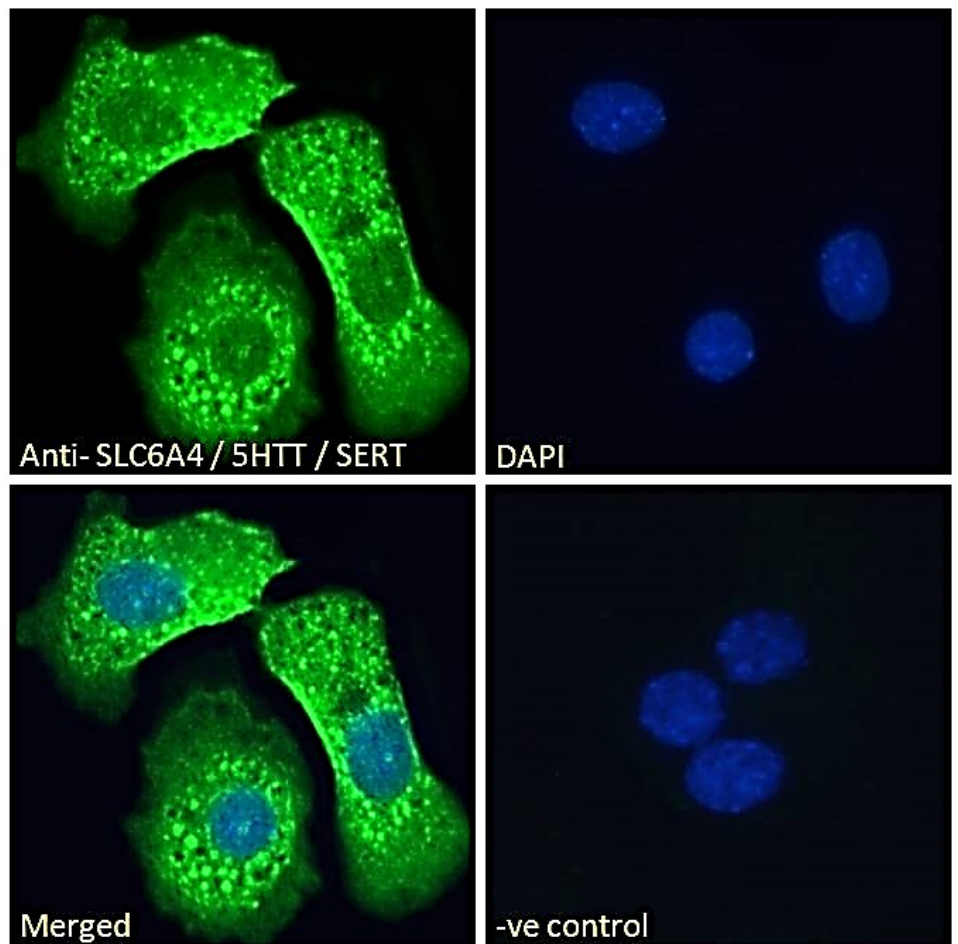
### Species Reactivity

**Tested:** Human

**Expected from sequence similarity:** Human, Mouse, Rat



EB06743 (2 $\mu$ g/ml) staining of Human Colon lysate (35 $\mu$ g protein in RIPA buffer). Detected by chemiluminescence.



EB06743 Immunofluorescence analysis of paraformaldehyde fixed HepG2 cells, permeabilized with 0.15% Triton. Primary incubation 1hr (10 $\mu$ g/ml) followed by Alexa Fluor 488 secondary antibody (2 $\mu$ g/ml), showing vesicle staining. The nuclear stain is DAPI (blue). Negative control: Unimmunized goat IgG (10 $\mu$ g/ml) followed by Alexa Fluor 488 secondary antibody (2 $\mu$ g/ml).