



## International Office

### Everest Biotech Ltd

Vector Laboratories, Inc.  
6737 Mowry Ave  
Newark, CA 94560  
United States

Customer Service:

[customerservice@vectorlabs.com](mailto:customerservice@vectorlabs.com)

Technical Service:

[technical@vectorlabs.com](mailto:technical@vectorlabs.com)

Tel: +1 (800) 227-6666

[www.everestbiotech.com](http://www.everestbiotech.com)

**Research Use Only. Not for  
diagnostic or therapeutic use.**

## EB12061 - Goat Anti-SLC7A7 / y+LAT-1 Antibody

Size: 100µg specific antibody in 200µl



### Target Protein

**Principal Names:** SLC7A7, solute carrier family 7 (amino acid transporter light chain, y+L system), member 7, LAT3, LPI, MOP-2, Y+LAT1, y+LAT-1, Y+L amino acid transporter 1, monocyte amino acid permease 2, solute carrier family 7 (cationic amino acid transporter, y+ system), member 7, y(+)-L-type amino acid transporter 1

**Official Symbol:** SLC7A7

**Accession Number(s):** NP\_001119577.1

**Human GeneID(s):** [9056](#)

**Important Comments:** Reported variants represent identical protein: NP\_001119577.1, NP\_001119578.1

### Immunogen

Peptide with sequence SQPEVETSPLGD-C, from the N Terminus of the protein sequence according to NP\_001119577.1.

Please note the [peptide](#) is available for sale.

### Purification and Storage

Purified from goat serum by ammonium sulphate precipitation followed by antigen affinity chromatography using the immunizing peptide.

Supplied at 0.5 mg/ml in Tris saline, 0.02% sodium azide, pH7.3 with 0.5% bovine serum albumin.

Aliquot and store at -20°C. Minimize freezing and thawing.

### Applications Tested

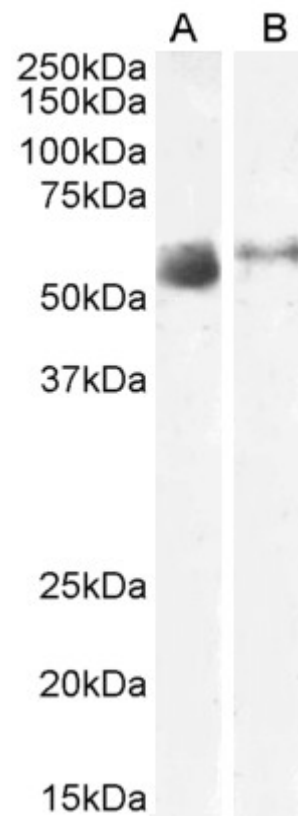
**Peptide ELISA:** antibody detection limit dilution 1:128000.

**Western blot:** Approx 55-58kDa band observed in Human Lung and Skeletal Muscle lysates (calculated MW of 56.0kDa according to NP\_001119577.1. Recommended concentration: 1-3µg/ml.

### Species Reactivity

**Tested:** Human

**Expected from sequence similarity:** Human



EB12061 (2 $\mu$ g/ml) staining of Human Lung (A) and Skeletal Muscle (B) lysate (35 $\mu$ g protein in RIPA buffer).  
Primary incubation was 1 hour. Detected by chemiluminescence