

UK Office

Everest Biotech Ltd

Cherwell Innovation Centre
77 Heyford Park
Upper Heyford
Oxfordshire
OX25 5HD
UK

Enquiries:

info@everestbiotech.com

Sales:

sales@everestbiotech.com

Tech support:

support@everestbiotech.com

Tel: +44 (0)1869 238326

www.everestbiotech.com

**Research Use Only. Not for
diagnostic or therapeutic use.**

EB10666 - Goat Anti-SLCO1B1 Antibody

Size: 100µg specific antibody in 200µl



Target Protein

Principal Names: SLCO1B1, solute carrier organic anion transporter family, member 1B1, LST-1, LST1, MGC133282, OATP-C, OATP1B1, OATP2, OATPC, OATP-2, liver-specific organic anion transporter 1, sodium-independent organic anion-transporting polypeptide 2, solute c

Official Symbol: SLCO1B1

Accession Number(s): NP_006437.3

Human GeneID(s): [10599](#)

Immunogen

Peptide with sequence C-KYQEKDINASEN, from the internal region (near C Terminus) of the protein sequence according to NP_006437.3.

Please note the [peptide](#) is available for sale.

Purification and Storage

Purified from goat serum by ammonium sulphate precipitation followed by antigen affinity chromatography using the immunizing peptide.

Supplied at 0.5 mg/ml in Tris saline, 0.02% sodium azide, pH7.3 with 0.5% bovine serum albumin.

Aliquot and store at -20°C. Minimize freezing and thawing.

Applications Tested

Peptide ELISA: antibody detection limit dilution 1:32000.

Immunofluorescence: Strong expression of the protein seen in the plasma membrane of HepG2 cells. Recommended concentration: 10µg/ml. This antibody has been successfully used in IF on Human: Malinen MM et al (2019). PMID: 30685239.

Species Reactivity

Tested: Human

Expected from sequence similarity: Human

Specific Reference

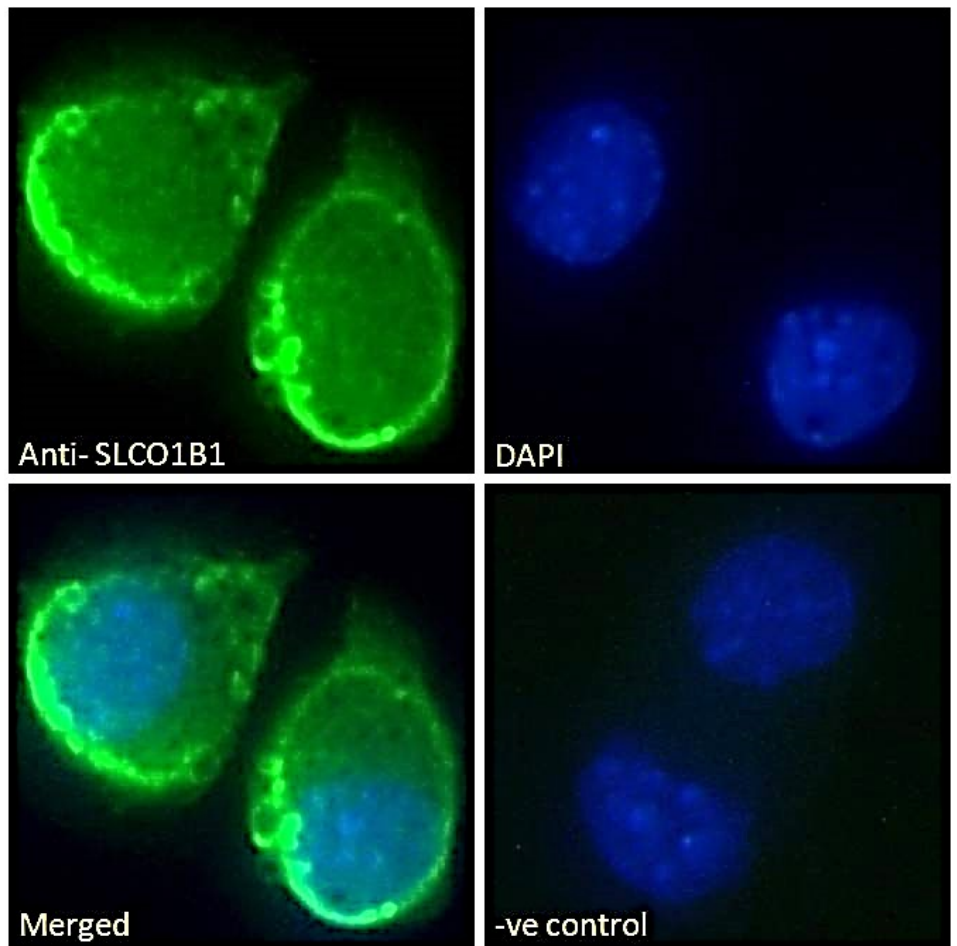
This antibody has been successfully used in IF on Human:

Malinen MM, Ito K, Kang HE, Honkakoski P, Brouwer KLR

Protein expression and function of organic anion transporters in short-term and long-term cultures of Huh7 human hepatoma cells.

Eur J Pharm Sci. 2019 Mar 15;130:186-195

PMID: 30685239



EB10666 Immunofluorescence analysis of paraformaldehyde fixed HepG2 cells, permeabilized with 0.15% Triton. Primary incubation 1hr (10ug/ml) followed by Alexa Fluor 488 secondary antibody (2ug/ml), showing plasma membrane staining. The nuclear stain is DAPI (blue). Negative control: Unimmunized goat IgG (10ug/ml) followed by Alexa Fluor 488 secondary antibody (2ug/ml).