

UK Office

Everest Biotech Ltd

Cherwell Innovation Centre
77 Heyford Park
Upper Heyford
Oxfordshire
OX25 5HD
UK

Enquiries:

info@everestbiotech.com

Sales:

sales@everestbiotech.com

Tech support:

support@everestbiotech.com

Tel: +44 (0)1869 238326

www.everestbiotech.com

**Research Use Only. Not for
diagnostic or therapeutic use.**

EB09685 - Goat Anti-SLCO1B3 Antibody

Size: 100µg specific antibody in 200µl



Target Protein

Principal Names: SLCO1B3, solute carrier organic anion transporter family, member 1B3, LST-3TM13, LST3, OATP1B3, OATP8, SLC21A8, liver-specific organic anion transporter 3TM13, organic anion transporter LST-3c, solute carrier family 21 (organic anion transporter), member 8

Official Symbol: SLCO1B3

Accession Number(s): NP_062818.1; NP_001336849.1

Human GeneID(s): [28234](#)

Non-Human GeneID(s): 28253 (mouse)

Immunogen

Peptide with sequence C-NGTSPEIVEKD, from the internal region of the protein sequence according to NP_062818.1; NP_001336849.1.

Please note the [peptide](#) is available for sale.

Purification and Storage

Purified from goat serum by ammonium sulphate precipitation followed by antigen affinity chromatography using the immunizing peptide.

Supplied at 0.5 mg/ml in Tris saline, 0.02% sodium azide, pH7.3 with 0.5% bovine serum albumin.

Aliquot and store at -20°C. Minimize freezing and thawing.

Applications Tested

Peptide ELISA: antibody detection limit dilution 1:128000.

Western blot: Approx 75kDa band observed in lysates of cell line HEK293 and A431 (calculated MW of 74.2kDa according to NP_001336849.1 and 77.4kDa according to NP_062818.1). Recommended concentration: 0.5-1µg/ml. Primary incubation 1 hour at room temperature.

Immunofluorescence: Strong expression of the protein seen in the membranes of A431 cells. Recommended concentration: 10µg/ml.

Flow Cytometry: Flow cytometric analysis of HepG2 cells. Recommended concentration: 10ug/ml.

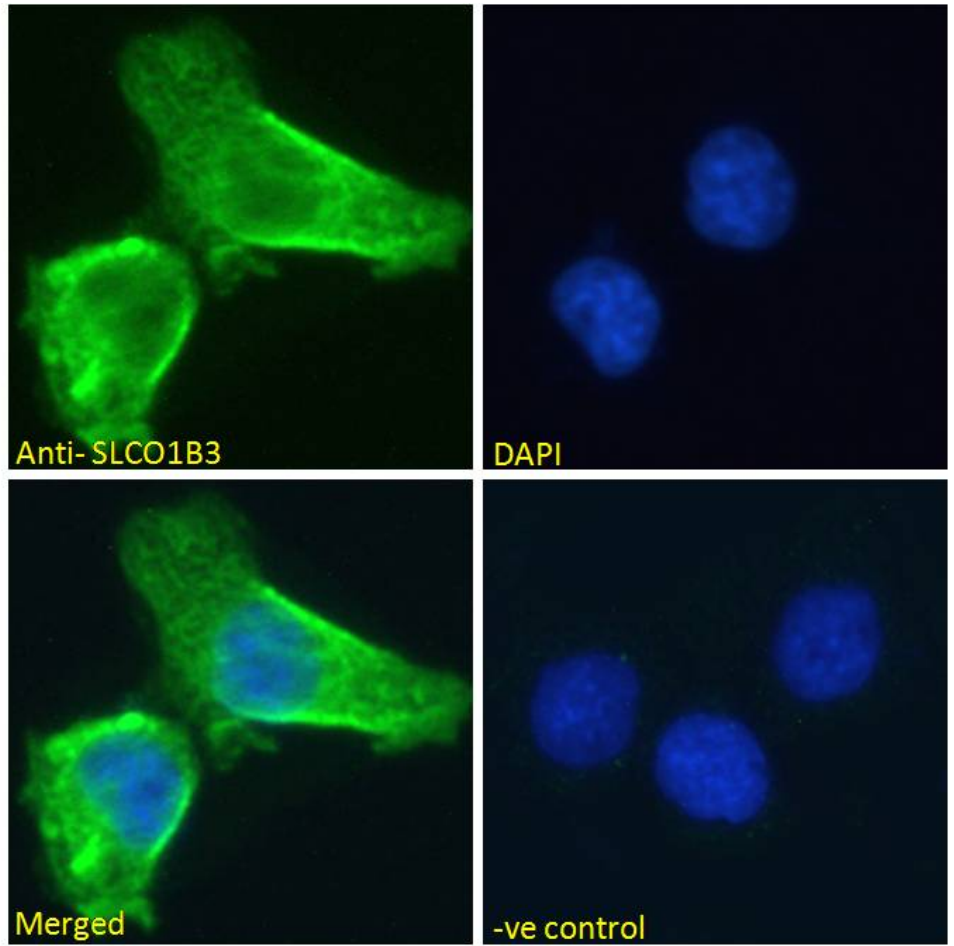
Species Reactivity

Tested: Human

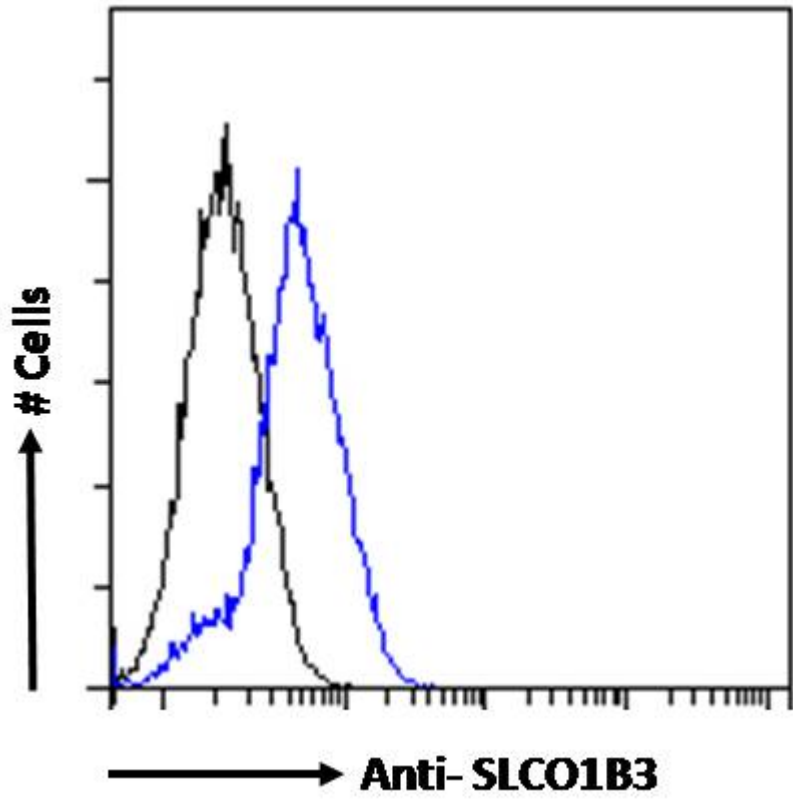
Expected from sequence similarity: Human, Mouse, Dog



EB09685 (1 μ g/ml) staining of HEK293 (A) and A431 (B) cell lysate (35 μ g protein in RIPA buffer). Detected by chemiluminescence.



EB09685 Immunofluorescence analysis of paraformaldehyde fixed A431 cells, permeabilized with 0.15% Triton. Primary incubation 1hr (10ug/ml) followed by Alexa Fluor 488 secondary antibody (2ug/ml), showing membrane staining. The nuclear stain is DAPI (blue). Negative control: Unimmunized goat IgG (10ug/ml) followed by Alexa Fluor 488 secondary antibody (2ug/ml).



EB09685 Flow cytometric analysis of paraformaldehyde fixed HepG2 cells (blue line), permeabilized with 0.5% Triton. Primary incubation overnight (10ug/ml) followed by Alexa Fluor 488 secondary antibody (1ug/ml). IgG control: Unimmunized goat IgG (black line) followed by Alexa Fluor 488 secondary antibody.