



International Office

Everest Biotech Ltd

Vector Laboratories, Inc.
6737 Mowry Ave
Newark, CA 94560
United States

Customer Service:

customerservice@vectorlabs.com

Technical Service:

technical@vectorlabs.com

Tel: +1 (800) 227-6666

www.everestbiotech.com

**Research Use Only. Not for
diagnostic or therapeutic use.**

EB06411 - Goat Anti-SLP76 / LCP2 Antibody

Size: 100µg specific antibody in 200µl



Target Protein

Principal Names: LCP2, SLP76, SLP-76, lymphocyte cytosolic protein 2 (SH2 domain containing leukocyte protein of 76kDa), 76 kDa tyrosine phosphoprotein, SH2 domain-containing leukocyte protein of 76kD, lymphocyte cytosolic protein 2 (SH2 domain containing leukocyte protein of 76kD)

Official Symbol: LCP2

Accession Number(s): NP_005556.1

Human GeneID(s): [3937](#)

Immunogen

Peptide with sequence ALRNVPFRSEV-C, from the N Terminus of the protein sequence according to NP_005556.1.

Please note the [peptide](#) is available for sale.

Purification and Storage

Purified from goat serum by ammonium sulphate precipitation followed by antigen affinity chromatography using the immunizing peptide.

Supplied at 0.5 mg/ml in Tris saline, 0.02% sodium azide, pH7.3 with 0.5% bovine serum albumin.

Aliquot and store at -20°C. Minimize freezing and thawing.

Applications Tested

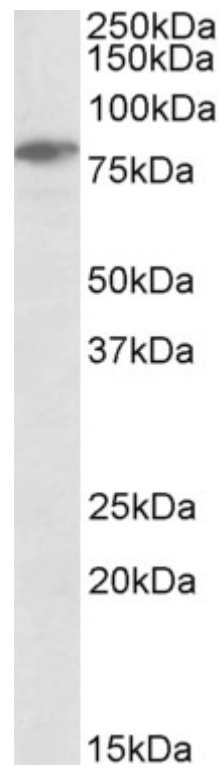
Peptide ELISA: antibody detection limit dilution 1:128000.

Western blot: Approx 80kDa band observed in lysates of cell line Jurkat (calculated MW of 60.2kDa according to NP_005556.1). The observed molecular weight corresponds to earlier findings in literature with different antibodies (Jackman et al, J Biol Chem. 1995 Mar 31;270(13):7029-32. PMID: 7706237). Recommended concentration: 0.3-1µg/ml.

Species Reactivity

Tested: Human

Expected from sequence similarity: Human, Mouse, Rat, Dog, Pig, Cow



EB06411 (0.3 μ g/ml) staining of Jurkat lysate (35 μ g protein in RIPA buffer). Primary incubation was 1 hour.
Detected by chemiluminescence.