



UK Office

Everest Biotech Ltd

Cherwell Innovation Centre
77 Heyford Park
Upper Heyford
Oxfordshire
OX25 5HD
UK

Enquiries:

info@everestbiotech.com

Sales:

sales@everestbiotech.com

Tech support:

support@everestbiotech.com

Tel: +44 (0)1869 238326

Fax: +44 (0)1869 238327

US Office

Everest Biotech c/o Abcore

405 Maple Street, Suite A106
Ramona,
CA 92065
USA

Inquiries:

info@everestbiotech.com

Sales:

usasales@everestbiotech.com

Tech support:

support@everestbiotech.com

Tel: 888-320-4628 (toll-free)

Fax: 888-841-9041

www.everestbiotech.com

**Research Use Only. Not for
diagnostic or therapeutic use.**

EB05441 - Goat Anti-SMARCA3 Antibody

Size: 100µg specific antibody in 200µl



Target Protein

Principal Names: HLTF, SMARCA3, ZBU1, HLTF1, RNF80, HIP116, SNF2L3, HIP116A, SWI/SNF related, matrix associated, actin dependent regulator of chromatin, subfamily a, member 3, SNF2-like 3, sucrose nonfermenting-like 3, helicase-like transcription factor, DNA-binding protein/plasminogen activator inhibitor-1 regulator, SNF2L3

Official Symbol: HLTF

Accession Number(s): NP_003062.2; NP_620636.1; NP_001305863.1

Human GeneID(s): [6596](#)

Non-Human GeneID(s): 20585 (mouse)

Important Comments: .

Immunogen

Peptide with sequence C-KQAKINEIRTLIDL, from the C Terminus of the protein sequence according to NP_003062.2; NP_620636.1; NP_001305863.1.

Please note the [peptide](#) is available for sale.

Purification and Storage

Purified from goat serum by ammonium sulphate precipitation followed by antigen affinity chromatography using the immunizing peptide.

Supplied at 0.5 mg/ml in Tris saline, 0.02% sodium azide, pH7.3 with 0.5% bovine serum albumin.

Aliquot and store at -20°C. Minimize freezing and thawing.

Applications Tested

Peptide ELISA: antibody detection limit dilution 1:16000.

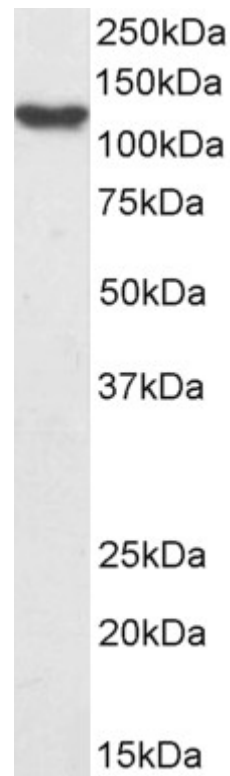
Western blot: Approx. 125kDa band observed in nuclear lysates of cell line HeLa and in preliminary testing of A431 nuclear cell lysate (calculated MW of 114kDa according to NP_003062.2). This molecular weight is routinely observed by other sources.
Recommended concentration: 0.3-1µg/ml. Primary incubation 1 hour at room temperature.

Flow Cytometry: Flow cytometric analysis of A431 cells. Recommended concentration: 10ug/ml.

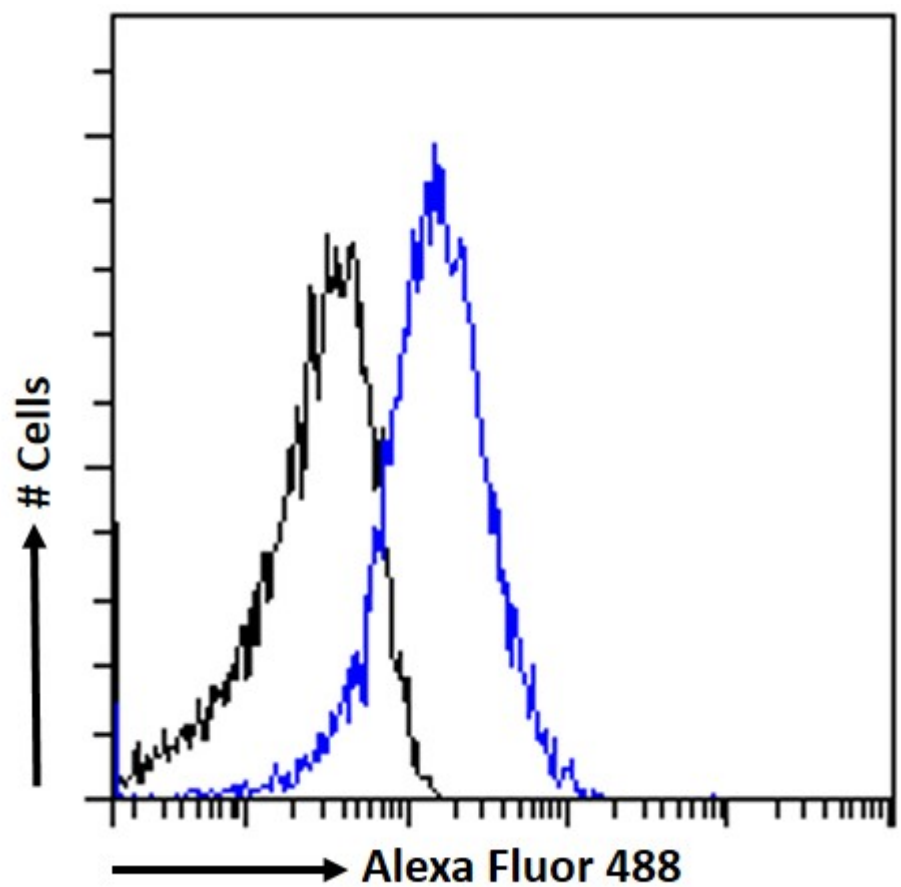
Species Reactivity

Tested: Human

Expected from sequence similarity: Human, Mouse, Rat, Dog, Cow



EB05441 staining (0.5 μ g/ml) of HeLa lysate (RIPA buffer, 30 μ g total protein per lane). Detected by chemiluminescence.



EB05441 Flow cytometric analysis of paraformaldehyde fixed A431 cells (blue line), permeabilized with 0.5% Triton. Primary incubation 1hr (10 μ g/ml) followed by Alexa Fluor 488 secondary antibody (1 μ g/ml). IgG control: Unimmunized goat IgG (black line) followed by Alexa Fluor 488 secondary antibody.