



## International Office

### Everest Biotech Ltd

Vector Laboratories, Inc.  
6737 Mowry Ave  
Newark, CA 94560  
United States

Customer Service:

[customerservice@vectorlabs.com](mailto:customerservice@vectorlabs.com)

Technical Service:

[technical@vectorlabs.com](mailto:technical@vectorlabs.com)

Tel: +1 (800) 227-6666

[www.everestbiotech.com](http://www.everestbiotech.com)

**Research Use Only. Not for  
diagnostic or therapeutic use.**

## EB09424 - Goat Anti-SMC5 Antibody

Size: 100µg specific antibody in 200µl



### Target Protein

**Principal Names:** SMC5, structural maintenance of chromosomes 5, KIAA0594, SMC5L1, OTTHUMP00000063367, SMC5 protein, SMC5 structural maintenance of chromosomes 5-like 1

**Official Symbol:** SMC5

**Accession Number(s):** NP\_055925.2

**Human GeneID(s):** [23137](#)

**Non-Human GeneID(s):** 226026 (mouse), 293967 (rat)

### Immunogen

Peptide with sequence C-TSKHLEHKDNELRQ, from the Internal region of the protein sequence according to NP\_055925.2.

Please note the [peptide](#) is available for sale.

### Purification and Storage

Purified from goat serum by ammonium sulphate precipitation followed by antigen affinity chromatography using the immunizing peptide.

Supplied at 0.5 mg/ml in Tris saline, 0.02% sodium azide, pH7.3 with 0.5% bovine serum albumin.

Aliquot and store at -20°C. Minimize freezing and thawing.

### Applications Tested

**Peptide ELISA:** antibody detection limit dilution 1:128000.

**Western blot:** Preliminary testing showed bands at approx 100+150kDa in HEK293 nuclear lysates after 1µg/ml antibody staining (calculated MW of 129kDa according to NP\_055925.2). These bands were successfully blocked by incubation with the immunizing peptide. Primary incubation 1 hour at room temperature.

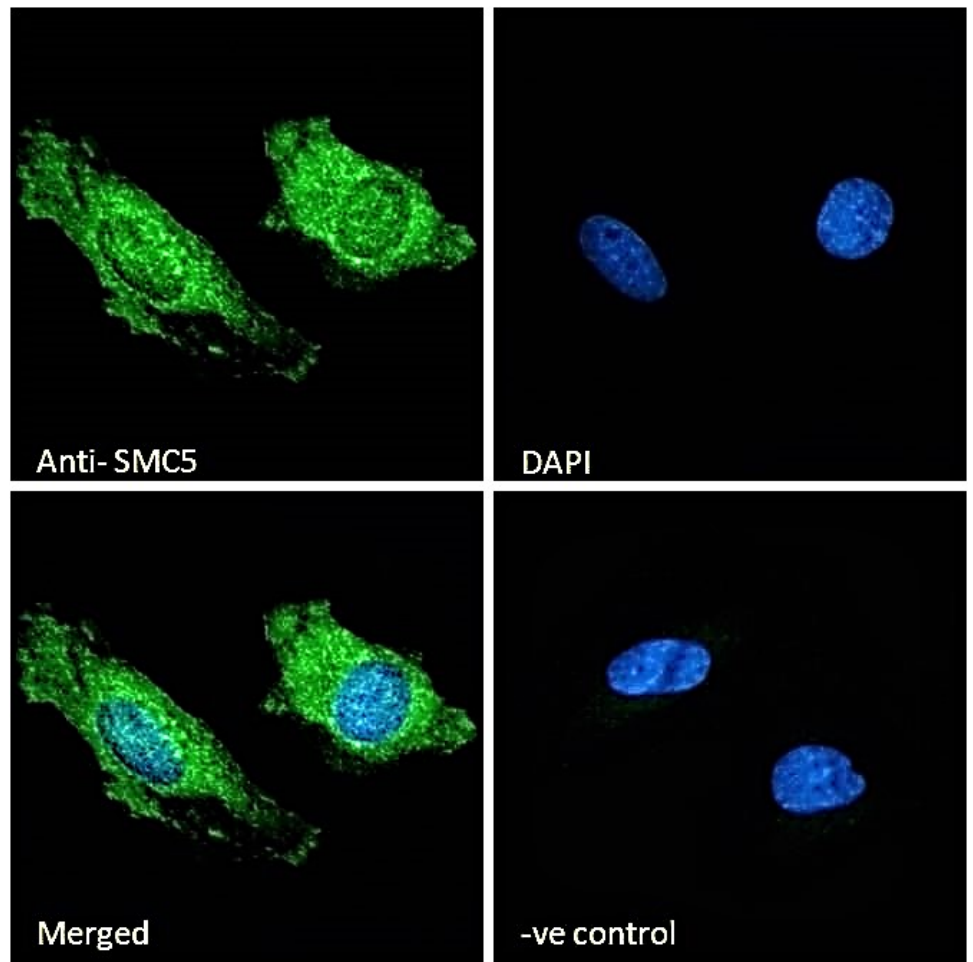
**Immunofluorescence:** Strong expression of the protein seen in HeLa cells.  
Recommended concentration: 10µg/ml.

**Flow Cytometry:** Flow cytometric analysis of HeLa cells. Recommended concentration: 10ug/ml.

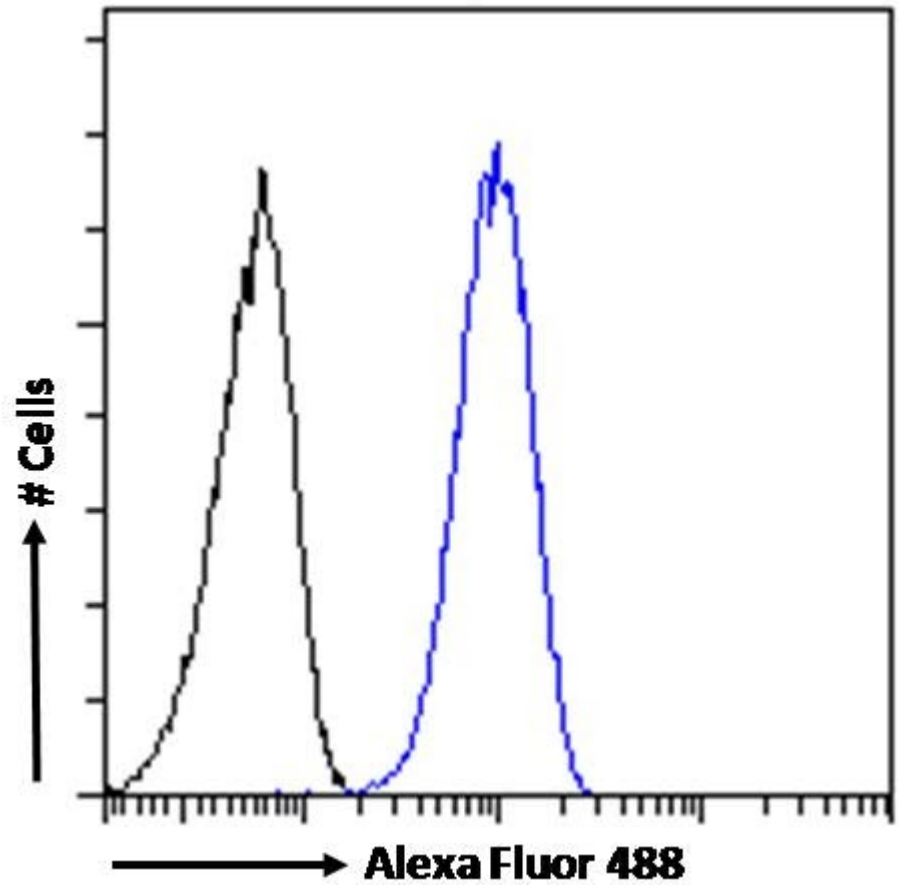
### Species Reactivity

**Tested:** Human

**Expected from sequence similarity:** Human, Mouse, Rat, Cow, Dog



EB09424 Immunofluorescence analysis of paraformaldehyde fixed HeLa cells, permeabilized with 0.15% Triton. Primary incubation 1hr (10ug/ml) followed by Alexa Fluor 488 secondary antibody (2ug/ml), showing speckled nuclear and cytoplasmic staining. The nuclear stain is DAPI (blue). Negative control: Unimmunized goat IgG (10ug/ml) followed by Alexa Fluor 488 secondary antibody (2ug/ml).



EB09424 Flow cytometric analysis of paraformaldehyde fixed HeLa cells (blue line), permeabilized with 0.5% Triton. Primary incubation 1hr (10ug/ml) followed by Alexa Fluor 488 secondary antibody (1ug/ml). IgG control: Unimmunized goat IgG (black line) followed by Alexa Fluor 488 secondary antibody.