

## UK Office

### Everest Biotech Ltd

Cherwell Innovation Centre  
77 Heyford Park  
Upper Heyford  
Oxfordshire  
OX25 5HD  
UK

Enquiries:

[info@everestbiotech.com](mailto:info@everestbiotech.com)

Sales:

[sales@everestbiotech.com](mailto:sales@everestbiotech.com)

Tech support:

[support@everestbiotech.com](mailto:support@everestbiotech.com)

Tel: +44 (0)1869 238326

[www.everestbiotech.com](http://www.everestbiotech.com)

**Research Use Only. Not for  
diagnostic or therapeutic use.**

## EB07704 - Goat Anti-SMN1 / SMN2 Antibody

Size: 100µg specific antibody in 200µl



### Target Protein

**Principal Names:** SMN1, survival of motor neuron 1, telomeric, BCD541, SMA1, SMA2, SMA3, SMA4, SMN, SMNT, T-BCD541, gemin 1, SMN2, survival of motor neuron 2, centromeric, BCD541, C-BCD541, SMNC

**Official Symbol:** SMN1 / SMN2

**Accession Number(s):** NP\_075012.1; NP\_000335.1; NP\_075013.1; NP\_075014.1; NP\_075015.1; NP\_059107.1

**Human GeneID(s):** [6606](#) , [6607](#)

**Important Comments:** This antibody is expected to recognise isoforms b and d of SMN1 (NP\_075012.1 and NP\_000335.1) and all reported isoforms of SMN2 (NP\_075013.1, NP\_075014.1, NP\_075015.1 and NP\_059107.1).

### Immunogen

Peptide with sequence C-DESENSRSPGNKSDN, from the internal region of the protein sequence according to NP\_075012.1; NP\_000335.1; NP\_075013.1; NP\_075014.1; NP\_075015.1; NP\_059107.1.

Please note the [peptide](#) is available for sale.

### Purification and Storage

Purified from goat serum by ammonium sulphate precipitation followed by antigen affinity chromatography using the immunizing peptide.

Supplied at 0.5 mg/ml in Tris saline, 0.02% sodium azide, pH7.3 with 0.5% bovine serum albumin.

Aliquot and store at -20°C. Minimize freezing and thawing.

### Applications Tested

**Peptide ELISA:** antibody detection limit dilution 1:32000.

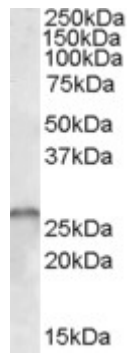
**Western blot:** Approx 26kDa band observed in Human Brain (Cerebellum) lysates (calculated MW of 28.5kDa according to NP\_075012.1 and NP\_075014.1).

Recommended concentration: 0.3-1µg/ml.

### Species Reactivity

**Tested:** Human

**Expected from sequence similarity:** Human



EB07704 (1µg/ml) staining of Human Cerebellum lysate (35µg protein in RIPA buffer). Primary incubation was 1 hour. Detected by chemiluminescence.