



## UK Office

### Everest Biotech Ltd

Cherwell Innovation Centre  
77 Heyford Park  
Upper Heyford  
Oxfordshire  
OX25 5HD  
UK

Enquiries:

[info@everestbiotech.com](mailto:info@everestbiotech.com)

Sales:

[sales@everestbiotech.com](mailto:sales@everestbiotech.com)

Tech support:

[support@everestbiotech.com](mailto:support@everestbiotech.com)

Tel: +44 (0)1869 238326

[www.everestbiotech.com](http://www.everestbiotech.com)

**Research Use Only. Not for  
diagnostic or therapeutic use.**

## EB07405-B - Goat Anti-Snail homolog 1 / SNAI1, Biotinylated Antibody

Size: 100µg specific antibody in 200µl



### Target Protein

**Principal Names:** SNAI1, snail family transcriptional repressor 1, SLUGH2, SNA, SNAH, SNAIL, SNAIL1, dJ710H13.1, protein sna, protein snail homolog 1, snail 1 homolog, snail 1 zinc finger protein, snail 1, zinc finger protein, snail family zinc finger 1, snail homolog 1

**Official Symbol:** SNAI1

**Accession Number(s):** NP\_005976.2

**Human GeneID(s):** [6615](#)

**Non-Human GeneID(s):** 20613 (mouse), 116490 (rat)

### Immunogen

Peptide with sequence RKPSDPNRKPNYC., from the N Terminus of the protein sequence according to NP\_005976.2.

Please note the [peptide](#) is available for sale.

### Purification and Storage

Purified from goat serum by ammonium sulphate precipitation followed by antigen affinity chromatography using the immunizing peptide.

Supplied at 0.5 mg/ml in Tris saline, 0.02% sodium azide, pH7.3 with 0.5% bovine serum albumin.

Aliquot and store at -20°C. Minimize freezing and thawing.

### Applications Tested

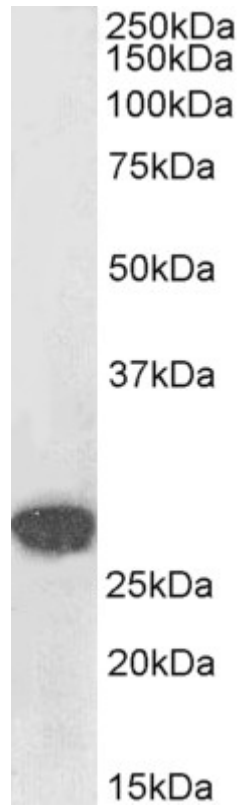
**Peptide ELISA:** antibody detection limit dilution 1:128000.

**Western blot:** Approx 28kDa band observed in lysates of cell line A431 (calculated MW of 29.1kDa according to NP\_005976.2). See non-biotinylated parental product's datasheet for further QC data. Recommended concentration: 0.03-0.1µg/ml.

### Species Reactivity

**Tested:** Human, Mouse

**Expected from sequence similarity:** Human, Mouse, Rat



Biotinylated EB07405 (0.1 $\mu$ g/ml) staining of A431 lysate (35 $\mu$ g protein in RIPA buffer), exactly mirroring its parental non-biotinylated product. Primary incubation was 1 hour. Detected by chemiluminescence, using streptavidin-HRP and using NAP blocker as a substitute for skimmed milk.