



International Office

Everest Biotech Ltd

Vector Laboratories, Inc.
6737 Mowry Ave
Newark, CA 94560
United States

Customer Service:

customerservice@vectorlabs.com

Technical Service:

technical@vectorlabs.com

Tel: +1 (800) 227-6666

www.everestbiotech.com

**Research Use Only. Not for
diagnostic or therapeutic use.**

EB10231 - Goat Anti-SNAP23 (aa 135-144) Antibody

Size: 100µg specific antibody in 200µl



Target Protein

Principal Names: HsT17016, OTTHUMP00000161263, SNAP23A, SNAP23B, synaptosomal-associated protein 23, synaptosomal-associated protein, 23kDa, SNAP23

Official Symbol: SNAP23

Accession Number(s): NP_003816.2; NP_570710.1

Human GeneID(s): [8773](#)

Non-Human GeneID(s): 20619 (mouse), 64630 (rat)

Important Comments: This antibody is expected to recognize both isoforms (NP_003816.2; NP_570710.1). Amino acid numbering in name refers to NP_003816.2 sequence.

Immunogen

Peptide with sequence C-TDKADTNRDR, from the C Terminus of the protein sequence according to NP_003816.2; NP_570710.1.

Please note the [peptide](#) is available for sale.

Purification and Storage

Purified from goat serum by ammonium sulphate precipitation followed by antigen affinity chromatography using the immunizing peptide.

Supplied at 0.5 mg/ml in Tris saline, 0.02% sodium azide, pH7.3 with 0.5% bovine serum albumin.

Aliquot and store at -20°C. Minimize freezing and thawing.

Applications Tested

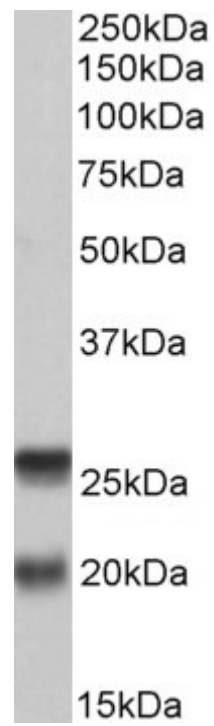
Peptide ELISA: antibody detection limit dilution 1:2000.

Western blot: Approx 20+26kDa bands observed in Human Peripheral Blood Mononucleocytes lysates (calculated MW of 17.8kDa according to NP_570710.1 and of 23.4kDa according to NP_003816.2). Recommended concentration: 0.2-0.6µg/ml.

Species Reactivity

Tested: Human

Expected from sequence similarity: Human, Mouse, Rat, Dog, Cow



EB10231 (0.2µg/ml) staining of PBMC lysate (35µg protein in RIPA buffer). Primary incubation was 1 hour.
Detected by chemiluminescence.