

## UK Office

### Everest Biotech Ltd

Cherwell Innovation Centre  
77 Heyford Park  
Upper Heyford  
Oxfordshire  
OX25 5HD  
UK

Enquiries:

[info@everestbiotech.com](mailto:info@everestbiotech.com)

Sales:

[sales@everestbiotech.com](mailto:sales@everestbiotech.com)

Tech support:

[support@everestbiotech.com](mailto:support@everestbiotech.com)

Tel: +44 (0)1869 238326

Fax: +44 (0)1869 238327

## US Office

### Everest Biotech c/o Abcore

405 Maple Street, Suite A106  
Ramona,  
CA 92065  
USA

Inquiries:

[info@everestbiotech.com](mailto:info@everestbiotech.com)

Sales:

[usasales@everestbiotech.com](mailto:usasales@everestbiotech.com)

Tech support:

[support@everestbiotech.com](mailto:support@everestbiotech.com)

Tel: 888-320-4628 (toll-free)

Fax: 888-841-9041

[www.everestbiotech.com](http://www.everestbiotech.com)

**Research Use Only. Not for  
diagnostic or therapeutic use.**

## EB06738 - Goat Anti-SNAP25 Antibody

Size: 100µg specific antibody in 200µl



### Target Protein

**Principal Names:** SNAP25, synaptosomal-associated protein, 25kDa, HGNC:11132, FLJ23079, SNAP, SNAP-25, bA416N4.2, dJ1068F16.2, synaptosomal-associated protein 25, RIC-4, RIC4, SEC9, resistance to inhibitors of cholinesterase 4 homolog; synaptosomal-associated protein 25

**Official Symbol:** SNAP25

**Accession Number(s):** NP\_003072.2; NP\_570824.1

**Human GeneID(s):** [6616](#)

**Non-Human GeneID(s):** 20614 (mouse), 25012 (rat)

**Important Comments:** This antibody is expected to recognise both reported isoforms NP\_003072.2 (SNAP25A) and NP\_570824.1 (SNAP25B). Reported variants represent identical protein: NP\_001309831.1, NP\_003072.2 Reported variants represent identical protein: NP\_001309834.1, NP\_001309832.1, NP\_001309833.1, NP\_001309839.1, NP\_001309836.1, NP\_570824.1, NP\_001309838.1, NP\_001309835.1, NP\_001309837.1

### Immunogen

Peptide with sequence C-DEANQRATKMLGSG, from the C Terminus of the protein sequence according to NP\_003072.2; NP\_570824.1.

Please note the [peptide](#) is available for sale.

### Purification and Storage

Purified from goat serum by ammonium sulphate precipitation followed by antigen affinity chromatography using the immunizing peptide.

Supplied at 0.5 mg/ml in Tris saline, 0.02% sodium azide, pH7.3 with 0.5% bovine serum albumin.

Aliquot and store at -20°C. Minimize freezing and thawing.

### Applications Tested

**Peptide ELISA:** antibody detection limit dilution 1:64000.

**Western blot:** Approx 26kDa band observed in Human Brain (Cerebellum), Mouse and Rat Brain lysates (calculated MW of 23kDa and of 23.3kDa according to NP\_003072.2; NP\_570824.1). Recommended concentration: 0.005-0.01µg/ml. Primary incubation was 1 hour.

### Species Reactivity

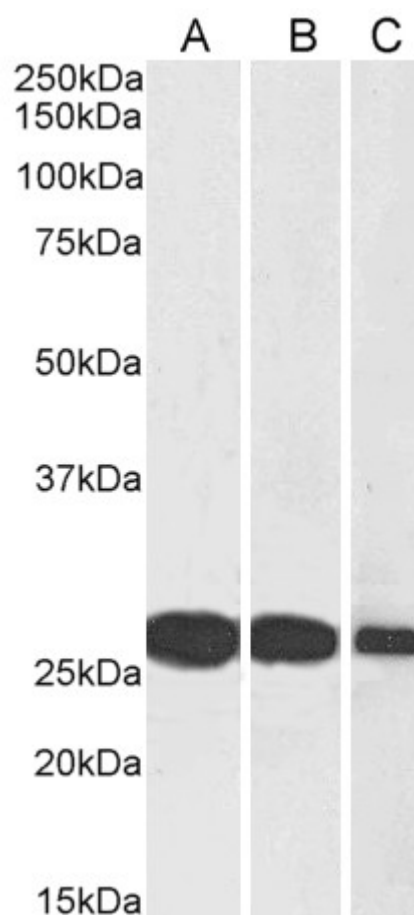
**Tested:** Human, Mouse, Rat

**Expected from sequence similarity:** Human, Mouse, Rat, Dog

### Specific Reference

**This antibody (previous batch) has been successfully used in WB, IHC and IF on Mouse:**

Kawakami S, Ohmoto M, Itoh S, Yuasa R, Inagaki H, Nishimura E, Ito T, Misaka T. Accumulation of SNAP25 in mouse gustatory and somatosensory cortices in response to food and chemical stimulation. Neuroscience. 2012 Aug 30;218:326-34. PMID: 22641083



EB06738 (0.005µg/ml) staining of Human Brain (Cerebellum) (A), Mouse Brain (B) and Rat Brain (C) lysates (35µg protein in RIPA buffer). Detected by chemiluminescence.