



## UK Office

### Everest Biotech Ltd

Cherwell Innovation Centre  
77 Heyford Park  
Upper Heyford  
Oxfordshire  
OX25 5HD  
UK

Enquiries:

[info@everestbiotech.com](mailto:info@everestbiotech.com)

Sales:

[sales@everestbiotech.com](mailto:sales@everestbiotech.com)

Tech support:

[support@everestbiotech.com](mailto:support@everestbiotech.com)

Tel: +44 (0)1869 238326

Fax: +44 (0)1869 238327

## US Office

### Everest Biotech c/o Abcore

405 Maple Street, Suite A106  
Ramona,  
CA 92065  
USA

Inquiries:

[info@everestbiotech.com](mailto:info@everestbiotech.com)

Sales:

[usasales@everestbiotech.com](mailto:usasales@everestbiotech.com)

Tech support:

[support@everestbiotech.com](mailto:support@everestbiotech.com)

Tel: 888-320-4628 (toll-free)

Fax: 888-841-9041

[www.everestbiotech.com](http://www.everestbiotech.com)

**Research Use Only. Not for  
diagnostic or therapeutic use.**

## EB06738-B - Goat Anti-SNAP25, Biotinylated Antibody

Size: 100µg specific antibody in 200µl



### Target Protein

**Principal Names:** SNAP25, synaptosome associated protein 25kDa, CMS18, RIC-4, RIC4, SEC9, SNAP, SNAP-25, SUP, bA416N4.2, dJ1068F16.2, resistance to inhibitors of cholinesterase 4 homolog, synaptosomal-associated protein, 25kDa

**Official Symbol:** SNAP25

**Accession Number(s):** NP\_003072.2; NP\_570824.1

**Human GeneID(s):** [6616](#)

**Non-Human GeneID(s):** 20614 (mouse), 25012 (rat)

**Important Comments:** This antibody is expected to recognise both reported isoforms NP\_003072.2 (SNAP25A) and NP\_570824.1 (SNAP25B). Reported variants represent identical protein: NP\_001309831.1, NP\_003072.2 Reported variants represent identical protein: NP\_001309834.1, NP\_001309832.1, NP\_001309833.1, NP\_001309839.1, NP\_001309836.1, NP\_570824.1, NP\_001309838.1, NP\_001309835.1, NP\_001309837.1

### Immunogen

Peptide with sequence C-DEANQRATKMLGSG., from the C Terminus of the protein sequence according to NP\_003072.2; NP\_570824.1.

Please note the [peptide](#) is available for sale.

### Purification and Storage

Purified from goat serum by ammonium sulphate precipitation followed by antigen affinity chromatography using the immunizing peptide.

Supplied at 0.5 mg/ml in Tris saline, 0.02% sodium azide, pH7.3 with 0.5% bovine serum albumin.

Aliquot and store at -20°C. Minimize freezing and thawing.

### Applications Tested

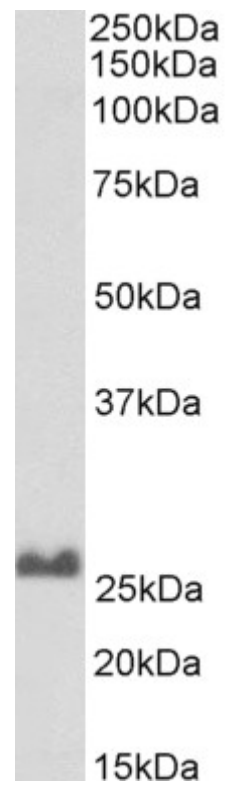
**Peptide ELISA:** antibody detection limit dilution 1:64000.

**Western blot:** Approx 26kDa band observed in Rat Brain lysates (calculated MW of 23.3kDa according to NP\_003072.2 and NP\_570824.1). See non-biotinylated parental product's datasheet for further QC data. Recommended concentration: 0.1-0.3µg/ml.

### Species Reactivity

**Tested:** Human, Mouse, Rat

**Expected from sequence similarity:** Human, Mouse, Rat, Dog



Biotinylated EB06738 (0.1 µg/ml) staining of Rat Brain lysate (35 µg protein in RIPA buffer), exactly mirroring its parental non-biotinylated product. Primary incubation was 1 hour. Detected by chemiluminescence, using streptavidin-HRP and using NAP blocker as a substitute for skimmed milk.