



## UK Office

### Everest Biotech Ltd

Cherwell Innovation Centre  
77 Heyford Park  
Upper Heyford  
Oxfordshire  
OX25 5HD  
UK

Enquiries:

[info@everestbiotech.com](mailto:info@everestbiotech.com)

Sales:

[sales@everestbiotech.com](mailto:sales@everestbiotech.com)

Tech support:

[support@everestbiotech.com](mailto:support@everestbiotech.com)

Tel: +44 (0)1869 238326

[www.everestbiotech.com](http://www.everestbiotech.com)

**Research Use Only. Not for  
diagnostic or therapeutic use.**

## EB06358 - Goat Anti-SNM1 (C Term) Antibody

Size: 100µg specific antibody in 200µl



### Target Protein

**Principal Names:** DCLRE1A, PSO2, SNM1, KIAA0086, DNA cross-link repair 1A (PSO2 homolog, *S. cerevisiae*), DNA-crosslink repair gene SNM1, Artemis, SNM1A, DNA cross-link repair 1A, OTTHUMP00000020516

**Official Symbol:** DCLRE1A

**Accession Number(s):** NP\_055696.3

**Human GeneID(s):** [9937](#)

### Immunogen

Peptide with sequence C-EKYFREWKLEAGY, from the C Terminus of the protein sequence according to NP\_055696.3.

Please note the [peptide](#) is available for sale.

### Purification and Storage

Purified from goat serum by ammonium sulphate precipitation followed by antigen affinity chromatography using the immunizing peptide.

Supplied at 0.5 mg/ml in Tris saline, 0.02% sodium azide, pH7.3 with 0.5% bovine serum albumin.

Aliquot and store at -20°C. Minimize freezing and thawing.

### Applications Tested

**Peptide ELISA:** antibody detection limit dilution 1:16000.

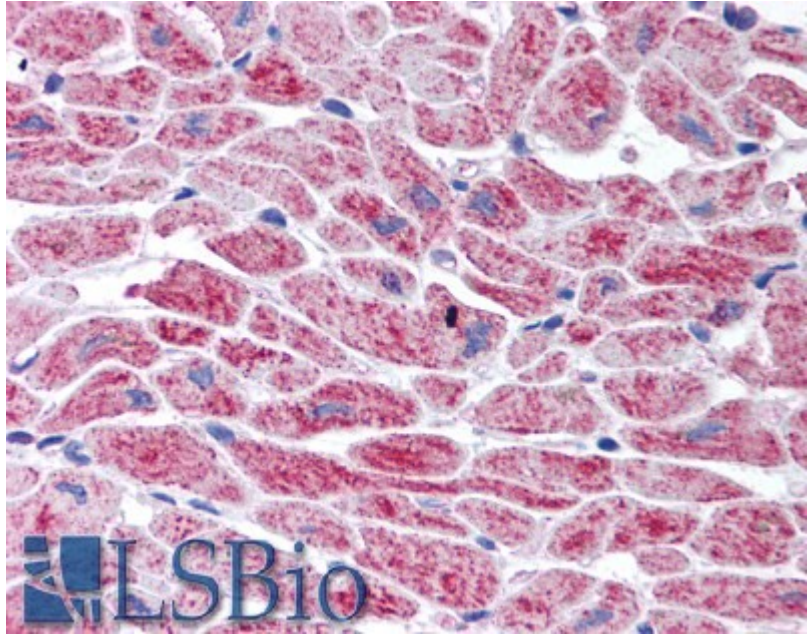
**Western blot:** Preliminary experiments gave no signal but low background in Human Brain and Testis lysates at up to 1µg/ml (note whole-cell RIPA lysates not nuclear lysates).

**IHC:** Paraffin embedded Human Heart. Recommended concentration: 5µg/ml.

### Species Reactivity

**Tested:** Human

**Expected from sequence similarity:** Human



EB06358 (5µg/ml) staining of paraffin embedded Human Heart. Steamed antigen retrieval with citrate buffer pH 6, AP-staining.