



UK Office

Everest Biotech Ltd

Cherwell Innovation Centre
77 Heyford Park
Upper Heyford
Oxfordshire
OX25 5HD
UK

Enquiries:

info@everestbiotech.com

Sales:

sales@everestbiotech.com

Tech support:

support@everestbiotech.com

Tel: +44 (0)1869 238326

www.everestbiotech.com

**Research Use Only. Not for
diagnostic or therapeutic use.**

EB05916 - Goat Anti-SNX26 / TCGAP (C Terminus) Antibody

Size: 100µg specific antibody in 200µl



Target Protein

Principal Names: SNX26, TCGAP, FLJ39019, sorting nexin 26, likely ortholog of mouse TC10/CDC42 GTPase-activating protein, NOMA-GAP, neurite outgrowth multiadaptor RhoGAP protein

Official Symbol: ARHGAP33

Accession Number(s): NP_443180.2; NP_001166101.1; NP_001353107.1

Human GeneID(s): [115703](#)

Non-Human GeneID(s): 233071 (mouse)

Immunogen

Peptide with sequence SWSLHSEGQTRSVC, from the C Terminus of the protein sequence according to NP_443180.2; NP_001166101.1; NP_001353107.1.

Please note the [peptide](#) is available for sale.

Purification and Storage

Purified from goat serum by ammonium sulphate precipitation followed by antigen affinity chromatography using the immunizing peptide.

Supplied at 0.5 mg/ml in Tris saline, 0.02% sodium azide, pH7.3 with 0.5% bovine serum albumin.

Aliquot and store at -20°C. Minimize freezing and thawing.

Applications Tested

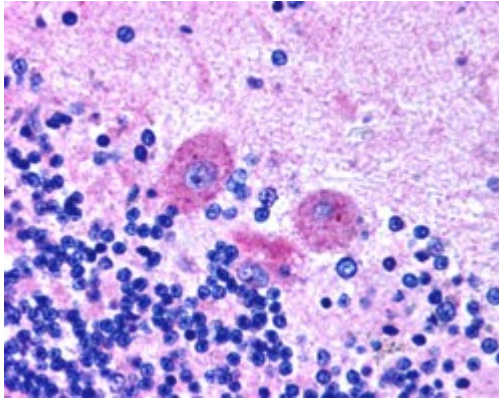
Peptide ELISA: antibody detection limit dilution 1:8000.

IHC: In paraffin embedded Human Brain shows cytoplasm staining of Purkinje cells in Cerebellum. Recommended concentration, 2.5µg/ml.

Species Reactivity

Tested: Human

Expected from sequence similarity: Human, Mouse



EB05916 (2.5µg/ml) staining of paraffin embedded Human Brain. Steamed antigen retrieval with citrate buffer pH 6, AP-staining.