



## International Office

### Everest Biotech Ltd

Vector Laboratories, Inc.  
6737 Mowry Ave  
Newark, CA 94560  
United States

Customer Service:

[customerservice@vectorlabs.com](mailto:customerservice@vectorlabs.com)

Technical Service:

[technical@vectorlabs.com](mailto:technical@vectorlabs.com)

Tel: +1 (800) 227-6666

[www.everestbiotech.com](http://www.everestbiotech.com)

**Research Use Only. Not for  
diagnostic or therapeutic use.**

## EB07382 - Goat Anti-ARHGAP33 / TCGAP (N Terminus) Antibody

Size: 100µg specific antibody in 200µl



### Target Protein

**Principal Names:** SNX26, TCGAP, sorting nexin 26, FLJ39019, ARHGAP33

**Official Symbol:** ARHGAP33

**Accession Number(s):** NP\_443180.2; NP\_001353107.1

**Human GeneID(s):** [115703](#)

### Immunogen

Peptide with sequence ARSTDSLDGPGE-C, from the N Terminus of the protein sequence according to NP\_443180.2; NP\_001353107.1.

Please note the [peptide](#) is available for sale.

### Purification and Storage

Purified from goat serum by ammonium sulphate precipitation followed by antigen affinity chromatography using the immunizing peptide.

Supplied at 0.5 mg/ml in Tris saline, 0.02% sodium azide, pH7.3 with 0.5% bovine serum albumin.

Aliquot and store at -20°C. Minimize freezing and thawing.

### Applications Tested

**Peptide ELISA:** antibody detection limit dilution 1:32000.

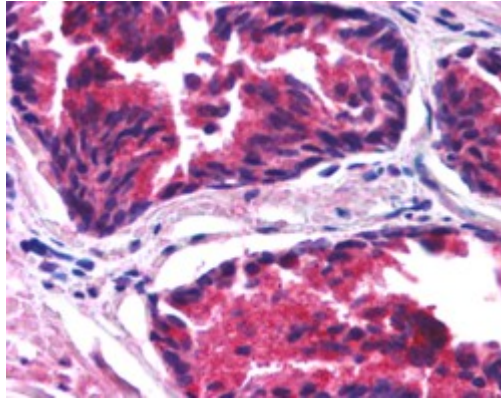
**Western blot:** Preliminary experiments gave an approx 35kDa band in human brain (hippocampus) lysates after 1µg/ml antibody staining. Please note that currently we cannot find an explanation in the literature for the band we observe given the calculated size of 121kDa according to NP\_443180.2. The 35kDa band was successfully blocked by incubation with the immunizing peptide.

**IHC:** In paraffin embedded Human Prostate shows cytoplasm staining of secretory cells in the glands. Recommended concentration, 1.25µg/ml.

### Species Reactivity

**Tested:** Human

**Expected from sequence similarity:** Human, Mouse



EB07382 1.25 $\mu$ g/ml) staining of paraffin embedded human prostate. Steamed antigen retrieval with citrate buffer pH 6, AP-staining.