

## UK Office

### Everest Biotech Ltd

Cherwell Innovation Centre  
77 Heyford Park  
Upper Heyford  
Oxfordshire  
OX25 5HD  
UK

Enquiries:

[info@everestbiotech.com](mailto:info@everestbiotech.com)

Sales:

[sales@everestbiotech.com](mailto:sales@everestbiotech.com)

Tech support:

[support@everestbiotech.com](mailto:support@everestbiotech.com)

Tel: +44 (0)1869 238326

[www.everestbiotech.com](http://www.everestbiotech.com)

**Research Use Only. Not for  
diagnostic or therapeutic use.**

## EB06217 - Goat Anti-SNX5 Antibody

Size: 100µg specific antibody in 200µl



### Target Protein

**Principal Names:** SNX5, FLJ10931, sorting nexin 5, RP11-504H3.2

**Official Symbol:** SNX5

**Accession Number(s):** NP\_055241.1; NP\_001269383.1

**Human GeneID(s):** [27131](#)

**Non-Human GeneID(s):** 69178 (mouse)

**Important Comments:** This antibody is expected to recognize both reported isoforms (NP\_055241.1; NP\_001269383.1). Reported variants represent identical protein: NP\_055241.1, NP\_689413.1

### Immunogen

Peptide with sequence SLLQSCIDLFKNN, from the C Terminus of the protein sequence according to NP\_055241.1; NP\_001269383.1.

Please note the [peptide](#) is available for sale.

### Purification and Storage

Purified from goat serum by ammonium sulphate precipitation followed by antigen affinity chromatography using the immunizing peptide.

Supplied at 0.5 mg/ml in Tris saline, 0.02% sodium azide, pH7.3 with 0.5% bovine serum albumin.

Aliquot and store at -20°C. Minimize freezing and thawing.

### Applications Tested

**Peptide ELISA:** antibody detection limit dilution 1:32000.

**Western blot:** Approx. 48kDa band observed in Jurkat and A549 lysates (calculated MW of 46.8kDa according to NP\_055241.1). Recommended concentration: 1-3µg/ml. Primary incubation was one hour.

**IHC:** In paraffin embedded Human Breast shows cytoplasm staining of ductal epithelial cells. Cytoplasm staining is also observed in PCT of Human Kidney and in trophoblasts of Human Placenta . Recommended concentration: 3-6µg/ml.

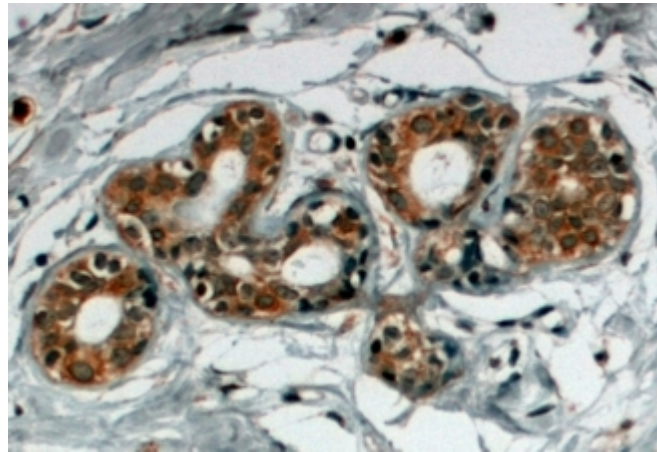
### Species Reactivity

**Tested:** Human

**Expected from sequence similarity:** Human, Mouse, Rat, Dog, Pig, Cow



EB06217 staining (1 $\mu$ g/ml) of Jurkat lysate (RIPA buffer, 35 $\mu$ g total protein per lane). Detected by chemiluminescence.



EB06217 (4 $\mu$ g/ml) staining of paraffin embedded Human Breast. Steamed antigen retrieval with citrate buffer pH 6, HRP-staining.