



## International Office

### Everest Biotech Ltd

Vector Laboratories, Inc.  
6737 Mowry Ave  
Newark, CA 94560  
United States

Customer Service:

[customerservice@vectorlabs.com](mailto:customerservice@vectorlabs.com)

Technical Service:

[technical@vectorlabs.com](mailto:technical@vectorlabs.com)

Tel: +1 (800) 227-6666

[www.everestbiotech.com](http://www.everestbiotech.com)

**Research Use Only. Not for  
diagnostic or therapeutic use.**

## EB05040 - Goat Anti-SOCS1 Antibody

Size: 100µg specific antibody in 200µl



### Target Protein

**Principal Names:** SOCS1, JAB, CIS1, SSI1, TIP3, CISH1, SSI-1, SOCS-1, suppressor of cytokine signaling 1, JAK binding protein, Tec-interacting protein 3, STAT induced SH3 protein 1, cytokine-inducible SH2 protein 1, STAT-induced STAT inhibitor 1, TIP-3

**Official Symbol:** SOCS1

**Accession Number(s):** NP\_003736.1

**Human GenelD(s):** [8651](#)

**Non-Human GenelD(s):** 12703 (mouse)

### Immunogen

Peptide with sequence C-VLRDYLSFPFQI, from the C Terminus of the protein sequence according to NP\_003736.1.

Please note the [peptide](#) is available for sale.

### Purification and Storage

Purified from goat serum by ammonium sulphate precipitation followed by antigen affinity chromatography using the immunizing peptide.

Supplied at 0.5 mg/ml in Tris saline, 0.02% sodium azide, pH7.3 with 0.5% bovine serum albumin.

Aliquot and store at -20°C. Minimize freezing and thawing.

### Applications Tested

**Peptide ELISA:** antibody detection limit dilution 1:4000.

**IHC:** Paraffin embedded Human Kidney. Recommended concentration: 8µg/ml. Paraffin embedded Mouse Kidney. Recommended concentration: 5-10µg/ml.

**Immunofluorescence:** Expression of the protein seen in the cytoplasm and nucleus of MCF7 cells. Recommended concentration: 10µg/ml.

**Flow Cytometry:** Flow cytometric analysis of HEK293 cells. Recommended concentration: 10ug/ml.

### Species Reactivity

**Tested:** Human, Mouse

**Expected from sequence similarity:** Human, Mouse, Dog, Cow, Rat, Pig

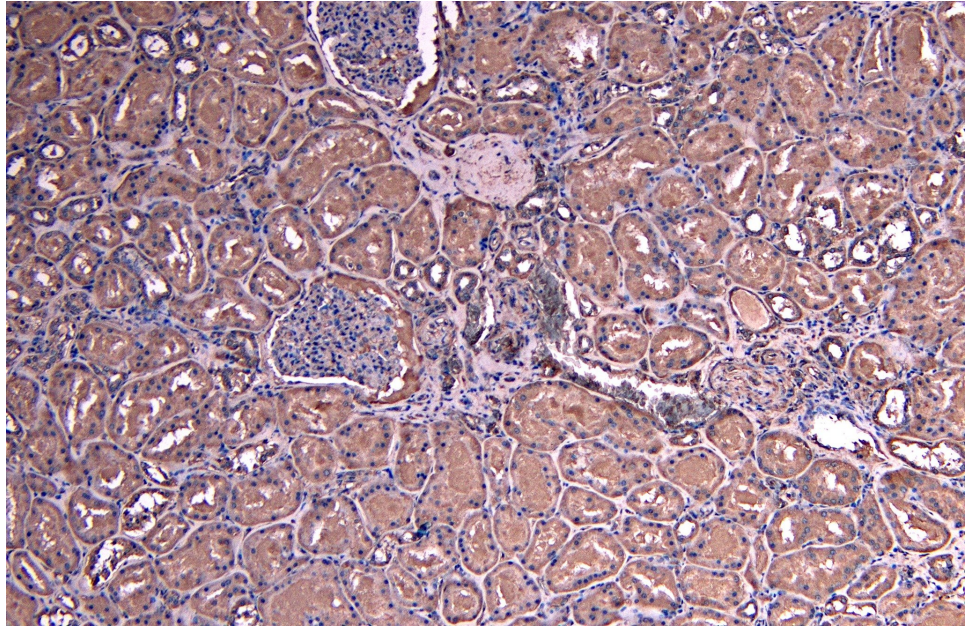
### Specific Reference

**This antibody (previous batch) has been successfully used in FC on Mouse:**

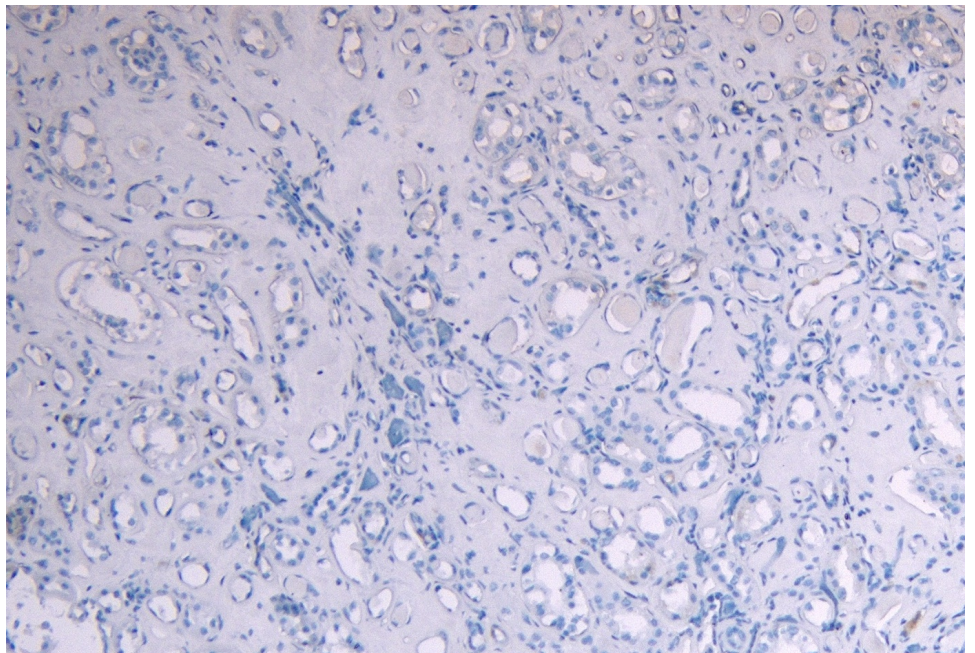
Elham Beyranvand Nejad, Camilla Labrie, Marit J van Elsas, Jan Willem Kleinovink, Hans-Willi Mittrücker, Kees L M C Franken, Sylvia Heink, Thomas Korn, Ramon Arens, Thorbald van Hall, Sjoerd H van der Burg

IL-6 signaling in macrophages is required for immunotherapy-driven regression of tumors J Immunother Cancer. 2021 Apr;9(4):e002460. doi: 10.1136/jitc-2021-002460.

PMID: 33879600

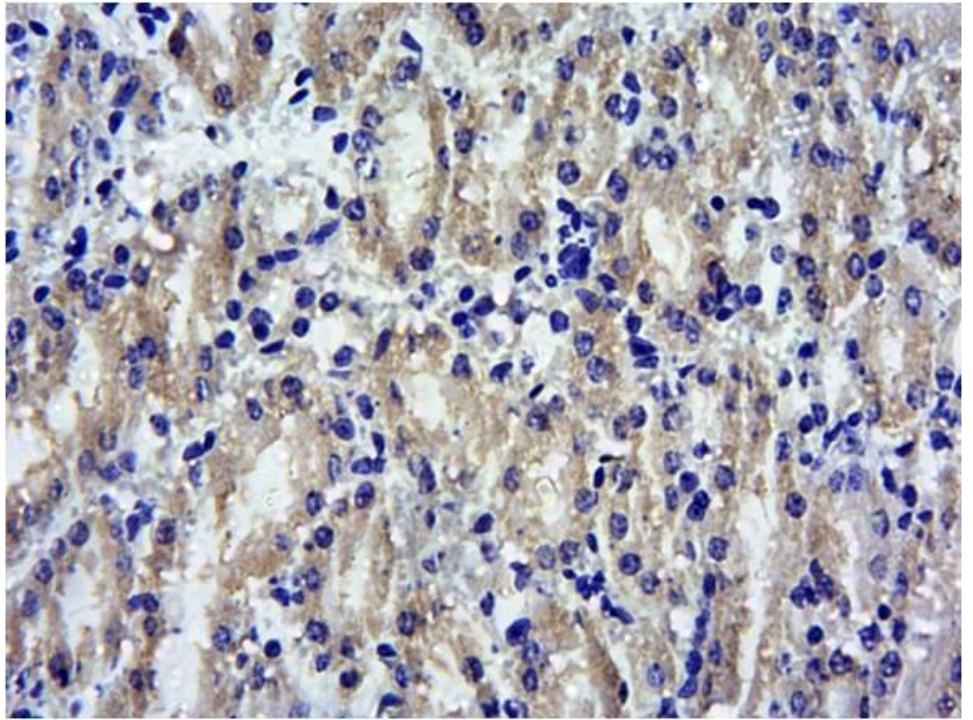


EB05040 (8µg/ml) staining of paraffin embedded Human Kidney. Heat induced antigen retrieval with citrate buffer pH 6, HRP-staining.

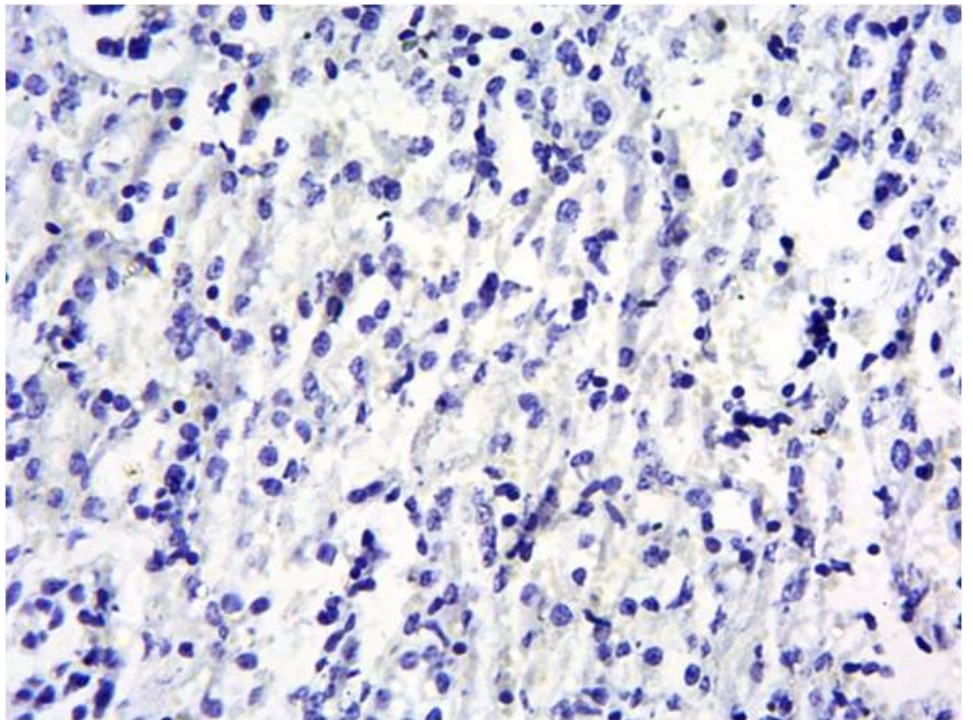


EB05040 Negative Control showing staining of paraffin embedded Human Kidney, with no primary antibody.

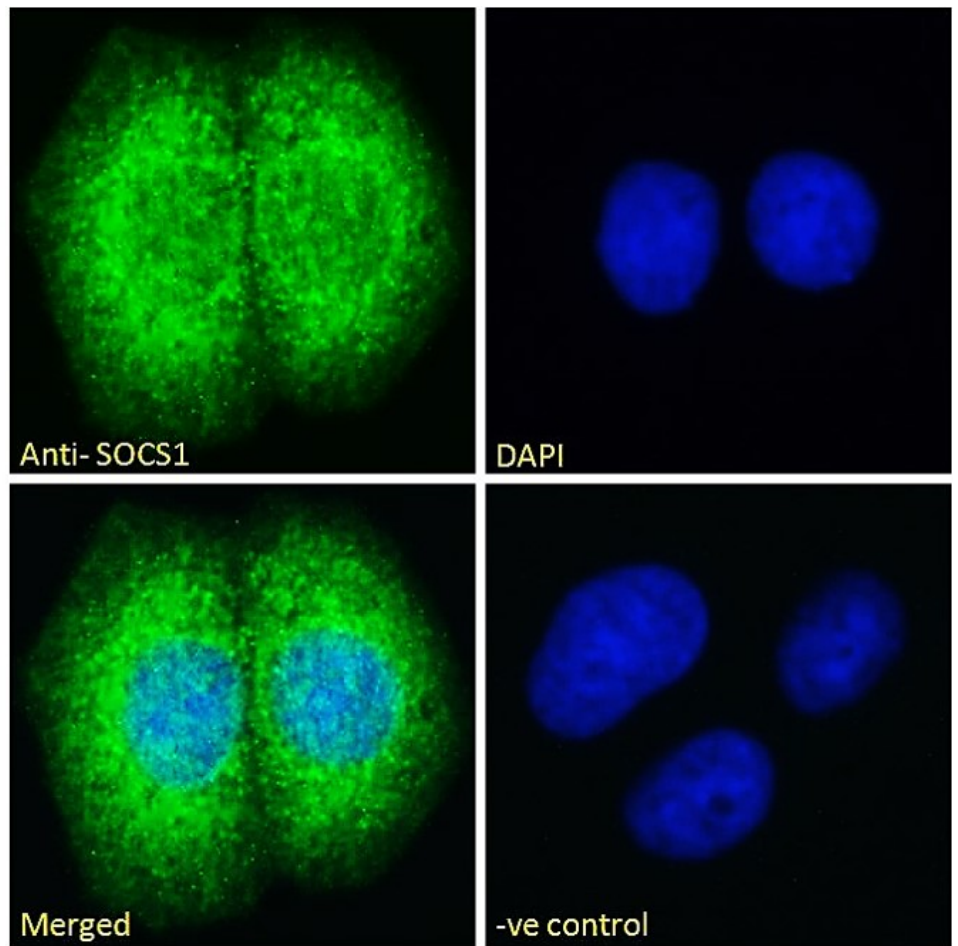




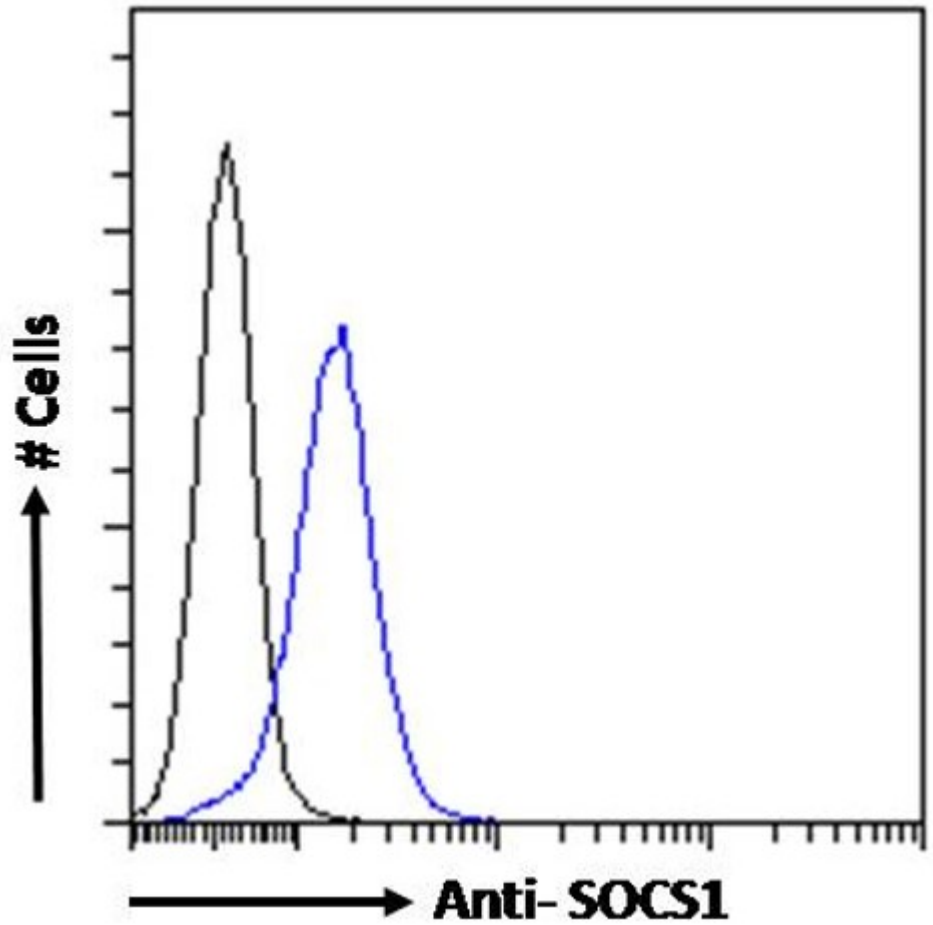
EB05040 (10 $\mu$ g/ml): Staining of paraffin embedded Mouse Kidney. Heat induced antigen retrieval with citrate buffer pH 6, HRP-Staining (1:500).



EB05040 Negative Control showing staining of paraffin embedded Mouse Kidney, with no primary antibody.



EB05040 Immunofluorescence analysis of paraformaldehyde fixed MCF7 cells, permeabilized with 0.15% Triton. Primary incubation 1hr (10ug/ml) followed by Alexa Fluor 488 secondary antibody (2ug/ml), showing cytoplasmic and nuclear staining. The nuclear stain is DAPI (blue). Negative control: Unimmunized goat IgG (10ug/ml) followed by Alexa Fluor 488 secondary antibody (2ug/ml).



EB05040 Flow cytometric analysis of paraformaldehyde fixed HEK293 cells (blue line), permeabilized with 0.5% Triton. Primary incubation 1hr (10ug/ml) followed by Alexa Fluor 488 secondary antibody (1ug/ml). IgG control: Unimmunized goat IgG (black line) followed by Alexa Fluor 488 secondary antibody.