



International Office

Everest Biotech Ltd

Vector Laboratories, Inc.
6737 Mowry Ave
Newark, CA 94560
United States

Customer Service:

customerservice@vectorlabs.com

Technical Service:

technical@vectorlabs.com

Tel: +1 (800) 227-6666

www.everestbiotech.com

**Research Use Only. Not for
diagnostic or therapeutic use.**

EB05104 - Goat Anti-SOCS2 Antibody

Size: 100µg specific antibody in 200µl



Target Protein

Principal Names: SOCS2, CIS2, SSI2, Cish2, SSI-2, SOCS-2, STATI2, suppressor of cytokine signaling 2, STAT induced STAT inhibitor-2, cytokine-inducible SH2 protein 2, suppressor of cytokine signaling-2

Official Symbol: SOCS2

Accession Number(s): NP_003868.1; NP_001257396.1

Human GeneID(s): [8835](#)

Immunogen

Peptide with sequence C-RLKDYLEEYKFQV, from the C Terminus of the protein sequence according to NP_003868.1; NP_001257396.1.

Please note the [peptide](#) is available for sale.

Purification and Storage

Purified from goat serum by ammonium sulphate precipitation followed by antigen affinity chromatography using the immunizing peptide.

Supplied at 0.5 mg/ml in Tris saline, 0.02% sodium azide, pH7.3 with 0.5% bovine serum albumin.

Aliquot and store at -20°C. Minimize freezing and thawing.

Applications Tested

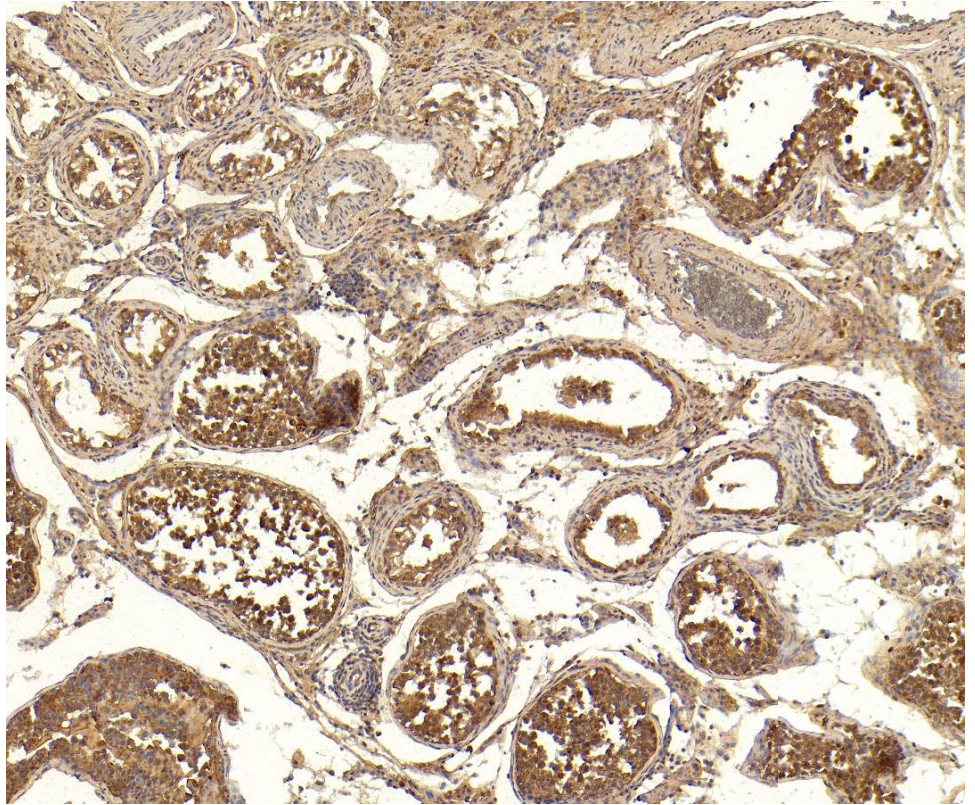
Peptide ELISA: antibody detection limit dilution 1:4000.

IHC: Paraffin embedded Human Testis. Recommended concentration: 4µg/ml.

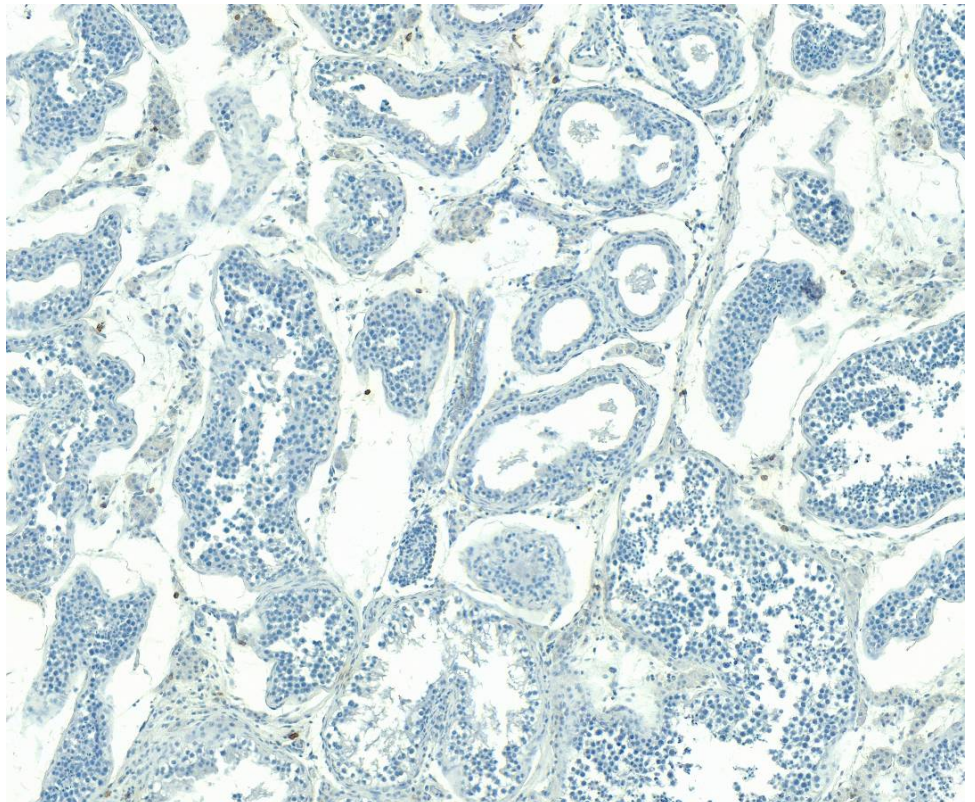
Species Reactivity

Tested: Human

Expected from sequence similarity: Human, Mouse, Rat



EB05104 (4µg/ml) staining of paraffin embedded Human Testis. Heat induced antigen retrieval with citrate buffer pH 6, HRP-staining.



EB05104 Negative Control showing staining of paraffin embedded Human Testis, with no primary antibody.