



UK Office

Everest Biotech Ltd

Cherwell Innovation Centre
77 Heyford Park
Upper Heyford
Oxfordshire
OX25 5HD
UK

Enquiries:

info@everestbiotech.com

Sales:

sales@everestbiotech.com

Tech support:

support@everestbiotech.com

Tel: +44 (0)1869 238326

Fax: +44 (0)1869 238327

US Office

Everest Biotech c/o Abcore

405 Maple Street, Suite A106
Ramona,
CA 92065
USA

Inquiries:

info@everestbiotech.com

Sales:

usasales@everestbiotech.com

Tech support:

support@everestbiotech.com

Tel: 888-320-4628 (toll-free)

Fax: 888-841-9041

www.everestbiotech.com

**Research Use Only. Not for
diagnostic or therapeutic use.**

EB05019 - Goat Anti-SOCS3 Antibody

Size: 100µg specific antibody in 200µl



Target Protein

Principal Names: SOCS3, CIS3, Cish3, SSI-3, SOCS-3, suppressor of cytokine signaling 3, STAT induced STAT inhibitor 3, cytokine-induced SH2 protein 3, ATOD4, MGC71791, SSI3

Official Symbol: SOCS3

Accession Number(s): NP_003946.3

Human GeneID(s): [9021](#)

Non-Human GeneID(s): 12702 (mouse), 89829 (rat)

Immunogen

Peptide with sequence C-PIREFLDQYDAPL, from the C Terminus of the protein sequence according to NP_003946.3.

Please note the [peptide](#) is available for sale.

Purification and Storage

Purified from goat serum by ammonium sulphate precipitation followed by antigen affinity chromatography using the immunizing peptide.

Supplied at 0.5 mg/ml in Tris saline, 0.02% sodium azide, pH7.3 with 0.5% bovine serum albumin.

Aliquot and store at -20°C. Minimize freezing and thawing.

Applications Tested

Peptide ELISA: antibody detection limit dilution 1:16000.

Western blot: Approx 26kDa band observed in lysates of cell line MOLT4 (calculated MW of 24.8kDa according to NP_003946.3). Recommended concentration: 1-3µg/ml. Primary incubation was 1 hour. Preliminary testing was unsuccessful on Mouse, Rat and Pig Liver for this particular batch.

Species Reactivity

Tested: Human

Expected from sequence similarity: Human, Mouse, Rat, Dog, Pig, Cow

Specific Reference

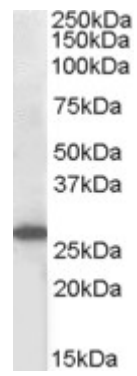
This antibody (previous batch) has been successfully used in Western blot on Rat:

Buckley MM, O'Halloran KD, Rae MG, Dinan TG, O'Malley D.

Modulation of enteric neurons by interleukin-6 and corticotropin-releasing factor contributes to viscer a rat model of irritable bowel syndrome.

J Physiol. 2014 Dec 1;592(23):5235-50.

PMID: 25260633



EB05019 (1µg/ml) staining of MOLT4 lysate (35µg protein in RIPA buffer). Detected by chemiluminescence.