



UK Office

Everest Biotech Ltd

Cherwell Innovation Centre
77 Heyford Park
Upper Heyford
Oxfordshire
OX25 5HD
UK

Enquiries:

info@everestbiotech.com

Sales:

sales@everestbiotech.com

Tech support:

support@everestbiotech.com

Tel: +44 (0)1869 238326

www.everestbiotech.com

**Research Use Only. Not for
diagnostic or therapeutic use.**

EB05347 - Goat Anti-SOCS4 Antibody

Size: 100µg specific antibody in 200µl



Target Protein

Principal Names: SOCS4, suppressor of cytokine signaling 4, DKFZp686J1568, SOCS7, SH2 domain containing SOCS box protein, suppressor of cytokine signaling 7

Official Symbol: SOCS4

Accession Number(s): NP_543143.1; NP_955453.1

Human GeneID(s): [122809](#)

Important Comments: Both variants represent identical protein (NP_543143.1 and NP_955453.1).

Immunogen

Peptide with sequence C-SKVRVLRIDAPEQQ, from the C Terminus of the protein sequence according to NP_543143.1; NP_955453.1.

Please note the [peptide](#) is available for sale.

Purification and Storage

Purified from goat serum by ammonium sulphate precipitation followed by antigen affinity chromatography using the immunizing peptide.

Supplied at 0.5 mg/ml in Tris saline, 0.02% sodium azide, pH7.3 with 0.5% bovine serum albumin.

Aliquot and store at -20°C. Minimize freezing and thawing.

Applications Tested

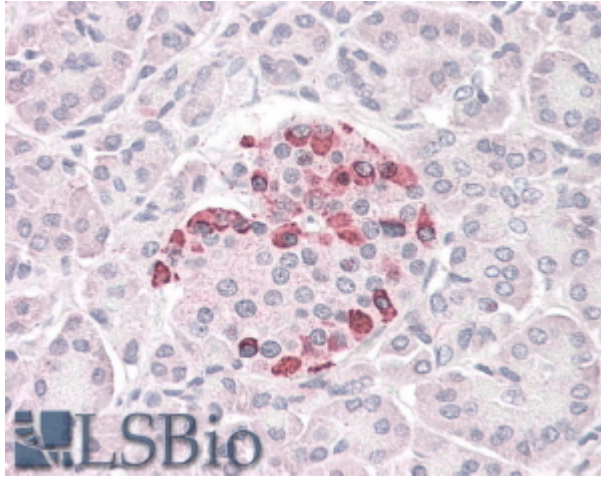
Peptide ELISA: antibody detection limit dilution 1:32000.

IHC: In paraffin embedded Human Pancreas shows cytoplasm staining on select beta cells in islet of Langerhans. Recommended concentration, 3-6µg/ml.

Species Reactivity

Tested: Human

Expected from sequence similarity: Human, Pig, Cow



EB05347 (3.8µg/ml) staining of paraffin embedded Human Pancreas. Steamed antigen retrieval with citrate buffer pH 6, AP-staining.