

## UK Office

### Everest Biotech Ltd

Cherwell Innovation Centre  
77 Heyford Park  
Upper Heyford  
Oxfordshire  
OX25 5HD  
UK

Enquiries:

[info@everestbiotech.com](mailto:info@everestbiotech.com)

Sales:

[sales@everestbiotech.com](mailto:sales@everestbiotech.com)

Tech support:

[support@everestbiotech.com](mailto:support@everestbiotech.com)

Tel: +44 (0)1869 238326

[www.everestbiotech.com](http://www.everestbiotech.com)

**Research Use Only. Not for  
diagnostic or therapeutic use.**

## EB10825 - Goat Anti-SON Antibody

Size: 100µg specific antibody in 200µl



### Target Protein

**Principal Names:** SON, SON DNA binding protein, BASS1, C21orf50, DBP-5, FLJ21099, FLJ33914, KIAA1019, NREBP, Bax antagonist selected in Saccharomyces 1, NRE-binding protein, OTTHUMP00000197908, OTTHUMP00000198934, negative regulatory element-binding protein,

**Official Symbol:** SON

**Accession Number(s):** NP\_115571.1; NP\_620305.1

**Human GeneID(s):** [6651](#)

**Non-Human GeneID(s):** 20658 (mouse), 304092 (rat)

**Important Comments:** This antibody is expected to recognize reported isoforms B (NP\_115571.1) and F (NP\_620305.1).

### Immunogen

Peptide with sequence KSRCVSVQTDPTD, from the N Terminus of the protein sequence according to NP\_115571.1; NP\_620305.1.

Please note the [peptide](#) is available for sale.

### Purification and Storage

Purified from goat serum by ammonium sulphate precipitation followed by antigen affinity chromatography using the immunizing peptide.

Supplied at 0.5 mg/ml in Tris saline, 0.02% sodium azide, pH7.3 with 0.5% bovine serum albumin.

Aliquot and store at -20°C. Minimize freezing and thawing.

### Applications Tested

**Peptide ELISA:** antibody detection limit dilution 1:32000.

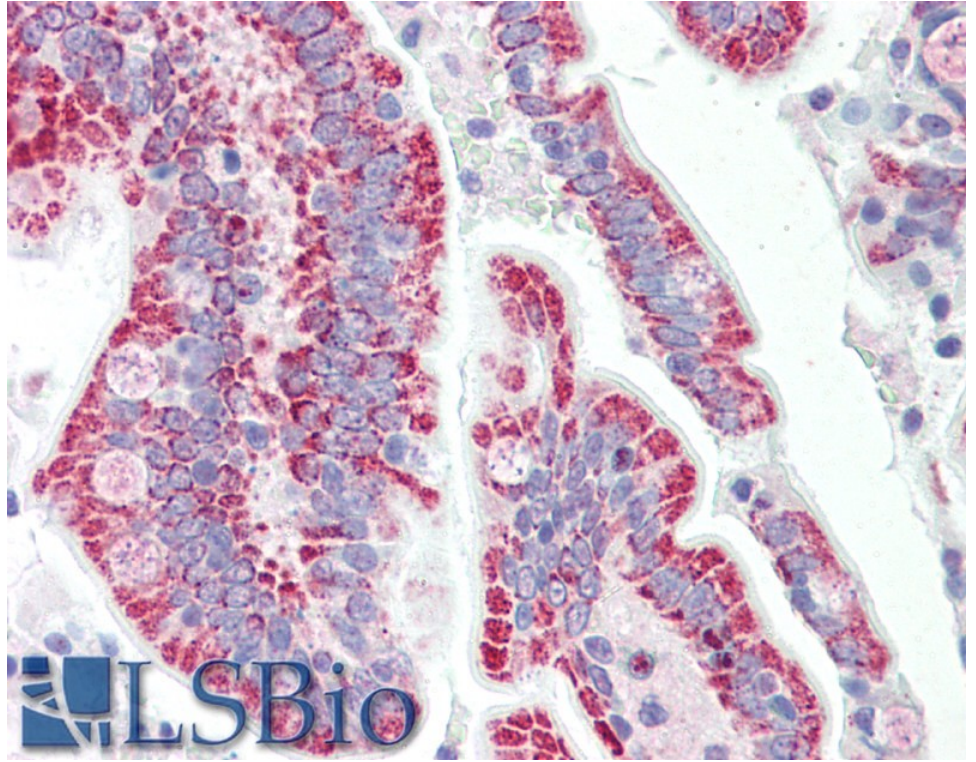
**Western blot:** Preliminary experiments gave an approx 35kDa band in Human, Mouse and Rat Heart lysates after 0.3µg/ml antibody staining. Please note that currently we cannot find an explanation in the literature for the band we observe given the calculated size of 250kDa according to NP\_115571.1. The 35kDa band was successfully blocked by incubation with the immunizing peptide.

**IHC:** Paraffin embedded Human Small Intestine. Recommended concentration: 5µg/ml.

### Species Reactivity

**Tested:** Human

**Expected from sequence similarity:** Human, Mouse, Rat, Dog, Cow



EB10825 (5µg/ml) staining of paraffin embedded Human Small Intestine. Steamed antigen retrieval with citrate buffer pH 6, AP-staining.