



UK Office

Everest Biotech Ltd

Cherwell Innovation Centre
77 Heyford Park
Upper Heyford
Oxfordshire
OX25 5HD
UK

Enquiries:

info@everestbiotech.com

Sales:

sales@everestbiotech.com

Tech support:

support@everestbiotech.com

Tel: +44 (0)1869 238326

Fax: +44 (0)1869 238327

US Office

Everest Biotech c/o Abcore

405 Maple Street, Suite A106
Ramona,
CA 92065
USA

Inquiries:

info@everestbiotech.com

Sales:

usasales@everestbiotech.com

Tech support:

support@everestbiotech.com

Tel: 888-320-4628 (toll-free)

Fax: 888-841-9041

www.everestbiotech.com

**Research Use Only. Not for
diagnostic or therapeutic use.**

EB10825 - Goat Anti-SON Antibody

Size: 100µg specific antibody in 200µl



Target Protein

Principal Names: SON, SON DNA binding protein, BASS1, C21orf50, DBP-5, FLJ21099, FLJ33914, KIAA1019, NREBP, Bax antagonist selected in Saccharomyces 1, NRE-binding protein, OTTHUMP00000197908, OTTHUMP00000198934, negative regulatory element-binding protein,

Official Symbol: SON

Accession Number(s): NP_115571.1; NP_620305.1

Human GeneID(s): [6651](#)

Non-Human GeneID(s): 20658 (mouse), 304092 (rat)

Important Comments: This antibody is expected to recognize reported isoforms B (NP_115571.1) and F (NP_620305.1).

Immunogen

Peptide with sequence KSRCVSVQTDPTD, from the N Terminus of the protein sequence according to NP_115571.1; NP_620305.1.

Please note the [peptide](#) is available for sale.

Purification and Storage

Purified from goat serum by ammonium sulphate precipitation followed by antigen affinity chromatography using the immunizing peptide.

Supplied at 0.5 mg/ml in Tris saline, 0.02% sodium azide, pH7.3 with 0.5% bovine serum albumin.

Aliquot and store at -20°C. Minimize freezing and thawing.

Applications Tested

Peptide ELISA: antibody detection limit dilution 1:32000.

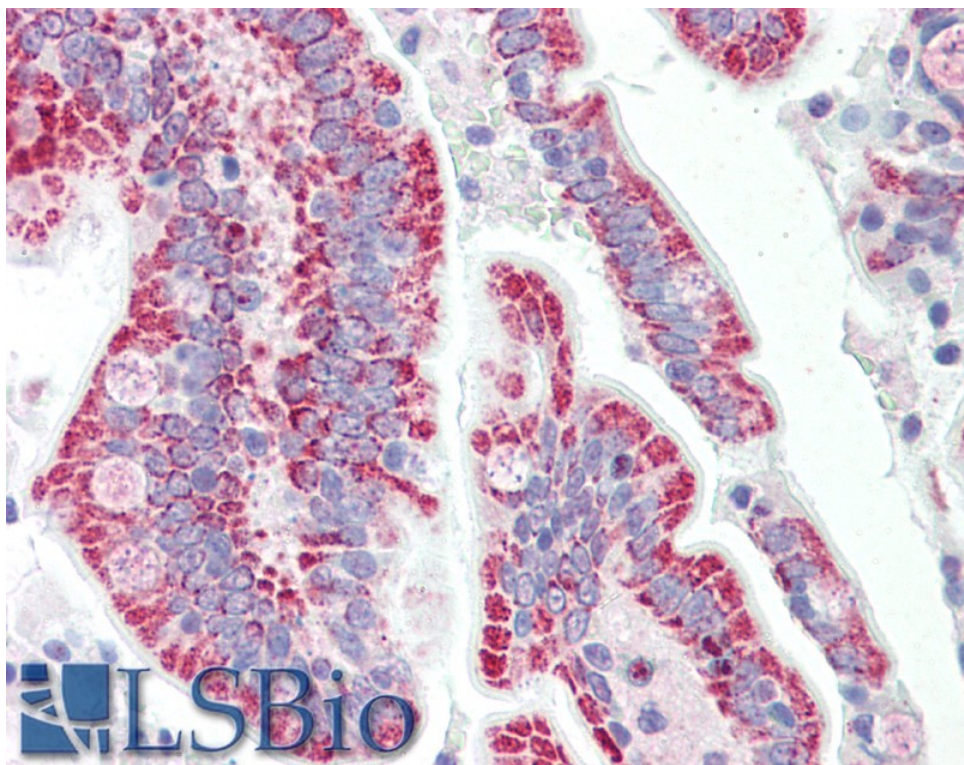
Western blot: Preliminary experiments gave an approx 35kDa band in Human, Mouse and Rat Heart lysates after 0.3µg/ml antibody staining. Please note that currently we cannot find an explanation in the literature for the band we observe given the calculated size of 250kDa according to NP_115571.1. The 35kDa band was successfully blocked by incubation with the immunizing peptide.

IHC: Paraffin embedded Human Small Intestine. Recommended concentration: 5µg/ml.

Species Reactivity

Tested: Human

Expected from sequence similarity: Human, Mouse, Rat, Dog, Cow



EB10825 (5µg/ml) staining of paraffin embedded Human Small Intestine. Steamed antigen retrieval with citrate buffer pH 6, AP-staining.