



UK Office

Everest Biotech Ltd

Cherwell Innovation Centre
77 Heyford Park
Upper Heyford
Oxfordshire
OX25 5HD
UK

Enquiries:

info@everestbiotech.com

Sales:

sales@everestbiotech.com

Tech support:

support@everestbiotech.com

Tel: +44 (0)1869 238326

www.everestbiotech.com

**Research Use Only. Not for
diagnostic or therapeutic use.**

EB07177 - Goat Anti-SORBS1 / ponsin (internal) Antibody

Size: 100µg specific antibody in 200µl



Target Protein

Principal Names: SORBS1, sorbin and SH3 domain containing 1, CAP, DKFZp451C066, DKFZp586P1422, FLAF2, FLJ12406, KIAA1296, R85FL, SH3D5, SH3P12, SORB1, Fas-ligand associated factor 2, SH3-domain protein 5, SH3-domain protein 5 (ponsin), c-Cbl associated protein, ponsin

Official Symbol: SORBS1

Accession Number(s): NP_006425.2; NP_056200.1; NP_001030126.1; NP_001030127.1; NP_001030128.1; NP_079267.1; NP_001030129.1

Human GeneID(s): [10580](#)

Important Comments: This antibody is expected to recognise all 7 reported isoforms (NP_006425.2, NP_056200.1, NP_001030126.1, NP_001030127.1, NP_001030128.1, NP_079267.1 and NP_001030129.1).

Immunogen

Peptide with sequence C-SPKSEDDSDLYSP, from the internal region of the protein sequence according to NP_006425.2; NP_056200.1; NP_001030126.1; NP_001030127.1; NP_001030128.1; NP_079267.1; NP_001030129.1.

Please note the [peptide](#) is available for sale.

Purification and Storage

Purified from goat serum by ammonium sulphate precipitation followed by antigen affinity chromatography using the immunizing peptide.

Supplied at 0.5 mg/ml in Tris saline, 0.02% sodium azide, pH7.3 with 0.5% bovine serum albumin.

Aliquot and store at -20°C. Minimize freezing and thawing.

Applications Tested

Peptide ELISA: antibody detection limit dilution 1:2000.

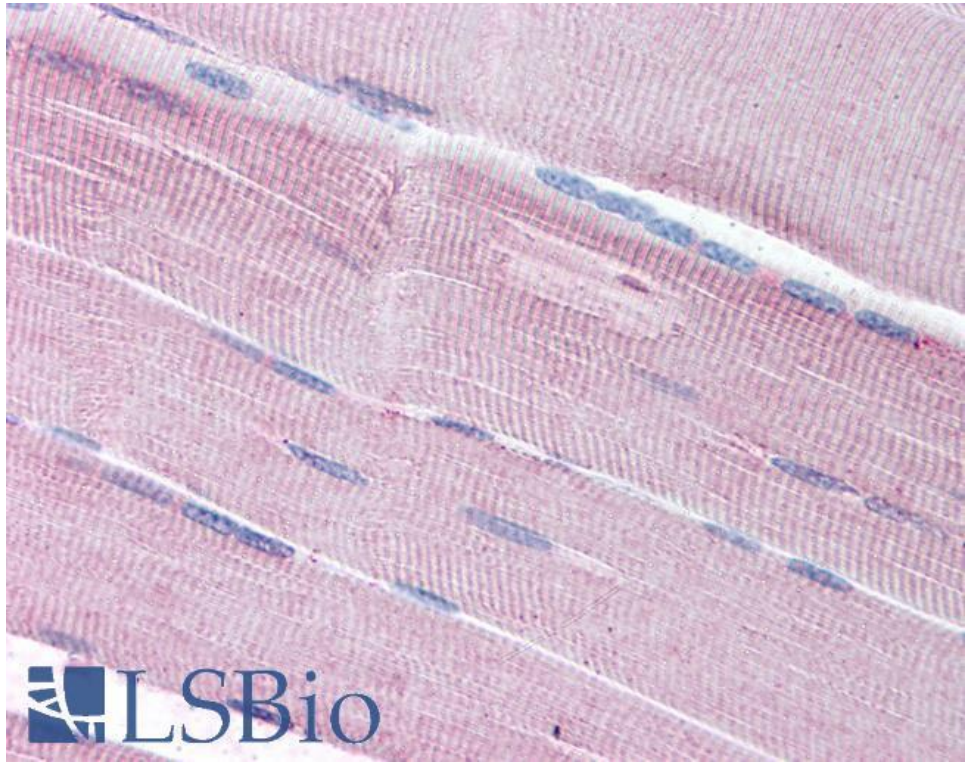
Western blot: Preliminary experiments in Human Adipose, Heart, Kidney, Liver and Muscle lysates gave no specific signal but low background (at antibody concentration up to 1µg/ml).

IHC: Paraffin embedded Human Skeletal Muscle. Recommended concentration: 5µg/ml.

Species Reactivity

Tested: Human

Expected from sequence similarity: Human



EB07177 (5µg/ml) staining of paraffin embedded Human Skeletal Muscle. Steamed antigen retrieval with citrate buffer pH 6, AP-staining.