



UK Office

Everest Biotech Ltd

Cherwell Innovation Centre
77 Heyford Park
Upper Heyford
Oxfordshire
OX25 5HD
UK

Enquiries:

info@everestbiotech.com

Sales:

sales@everestbiotech.com

Tech support:

support@everestbiotech.com

Tel: +44 (0)1869 238326

www.everestbiotech.com

**Research Use Only. Not for
diagnostic or therapeutic use.**

EB08217 - Goat Anti-SOX15 Antibody

Size: 100µg specific antibody in 200µl



Target Protein

Principal Names: SRY (sex determining region Y)-box 15, SOX20, SOX26, SOX27, SRY (sex determining region Y)-box 20, SRY-box 15

Official Symbol: SOX15

Accession Number(s): NP_008873.1

Human GeneID(s): [6665](#)

Immunogen

Peptide with sequence CSLPQSDPRLQGE, from the internal region of the protein sequence according to NP_008873.1.

Please note the [peptide](#) is available for sale.

Purification and Storage

Purified from goat serum by ammonium sulphate precipitation followed by antigen affinity chromatography using the immunizing peptide.

Supplied at 0.5 mg/ml in Tris saline, 0.02% sodium azide, pH7.3 with 0.5% bovine serum albumin.

Aliquot and store at -20°C. Minimize freezing and thawing.

Applications Tested

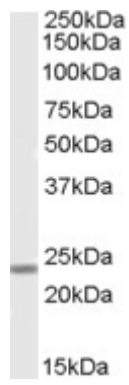
Peptide ELISA: antibody detection limit dilution 1:16000.

Western blot: Approx 24kDa band observed in Human Skeletal Muscle lysates (calculated MW of 25.3kDa according to NP_008873.1). Recommended concentration: 0.1-0.3µg/ml.

Species Reactivity

Tested: Human

Expected from sequence similarity: Human



EB08217 (0.1 μ g/ml) staining of Human Muscle lysate (35 μ g protein in RIPA buffer). Primary incubation was 1 hour. Detected by chemiluminescence.