



## International Office

### Everest Biotech Ltd

Vector Laboratories, Inc.  
6737 Mowry Ave  
Newark, CA 94560  
United States

Customer Service:

[customerservice@vectorlabs.com](mailto:customerservice@vectorlabs.com)

Technical Service:

[technical@vectorlabs.com](mailto:technical@vectorlabs.com)

Tel: +1 (800) 227-6666

[www.everestbiotech.com](http://www.everestbiotech.com)

**Research Use Only. Not for  
diagnostic or therapeutic use.**

## EB07378 - Goat Anti-SOX2 Antibody

Size: 100µg specific antibody in 200µl



### Target Protein

**Principal Names:** SOX2, SRY (sex determining region Y)-box 2, ANOP3, MGC2413, SRY-related HMG-box gene 2, sex-determining region Y-box 2, transcription factor SOX2

**Official Symbol:** SOX2

**Accession Number(s):** NP\_003097.1

**Human GeneID(s):** [6657](#)

### Immunogen

Peptide with sequence YNMMETELKPPGPQQ-C, from the N Terminus of the protein sequence according to NP\_003097.1.

Please note the [peptide](#) is available for sale.

### Purification and Storage

Purified from goat serum by ammonium sulphate precipitation followed by antigen affinity chromatography using the immunizing peptide.

Supplied at 0.5 mg/ml in Tris saline, 0.02% sodium azide, pH7.3 with 0.5% bovine serum albumin.

Aliquot and store at -20°C. Minimize freezing and thawing.

### Applications Tested

**Peptide ELISA:** antibody detection limit dilution 1:32000.

**Western blot:** Approx 40kDa band observed in HEK293 and MCF7 cell lysates and in nuclear lysates of cell line MCF7 (calculated MW of 34.3kDa according to JNP\_003097.1).

This molecular weight is routinely observed by other sources. Recommended concentration: 0.1-0.3µg/ml. Primary incubation 1 hour at room temperature.

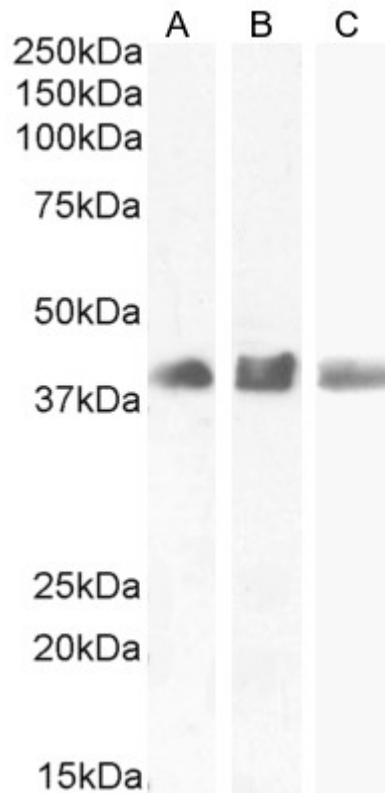
**IHC:** Paraffin embedded Human Tonsil. Recommended concentration: 6-8µg/ml.

**Flow Cytometry:** Flow cytometric analysis of HEK293 cells. Recommended concentration: 10ug/ml.

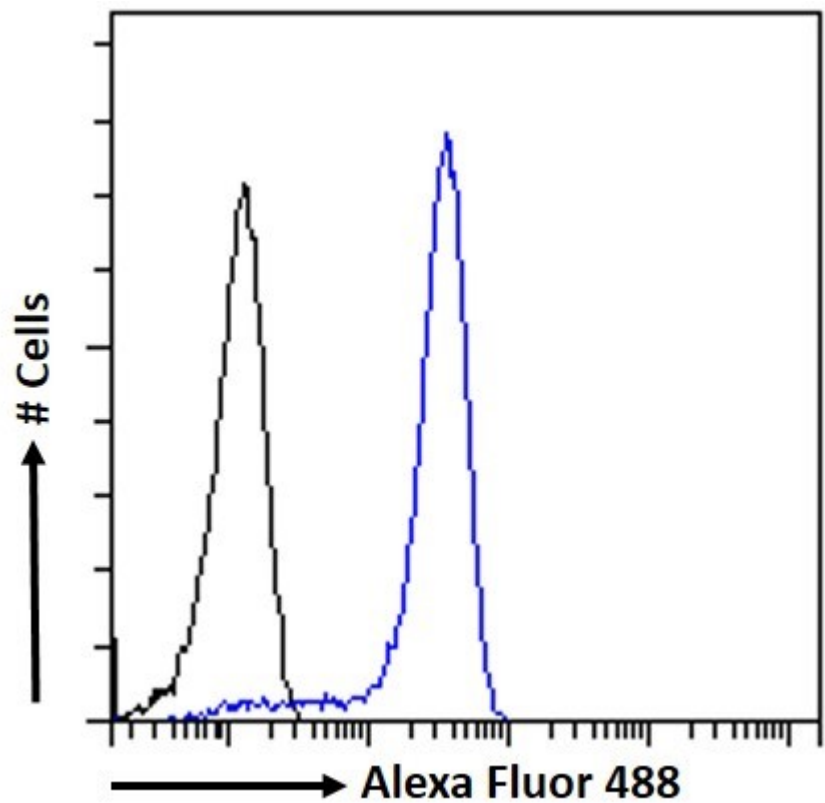
### Species Reactivity

**Tested:** Human

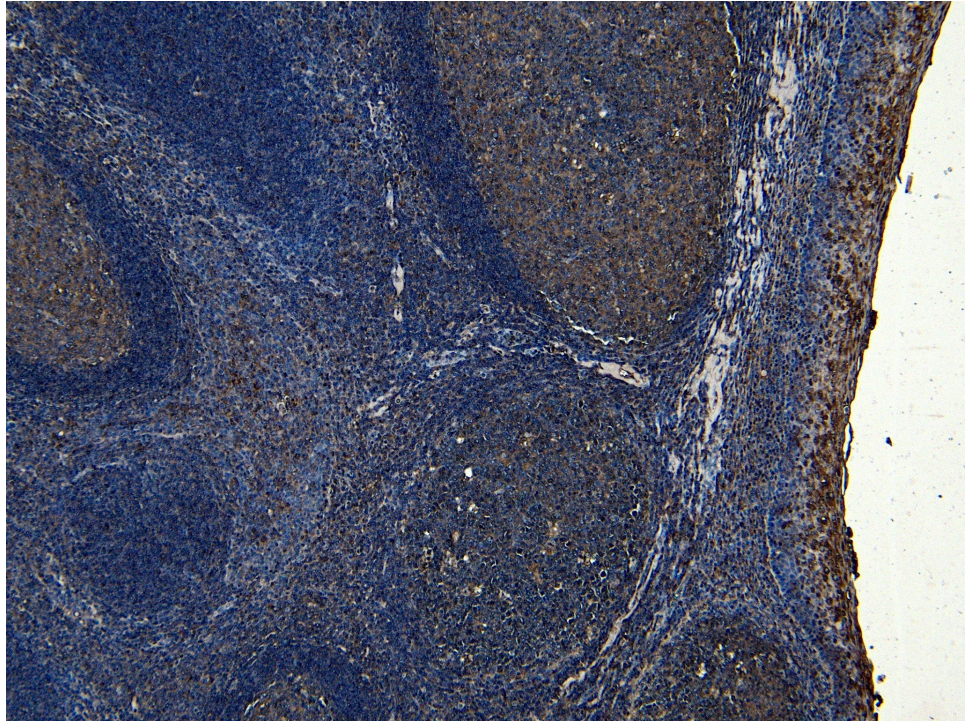
**Expected from sequence similarity:** Human, Mouse, Rat, Dog, Cow



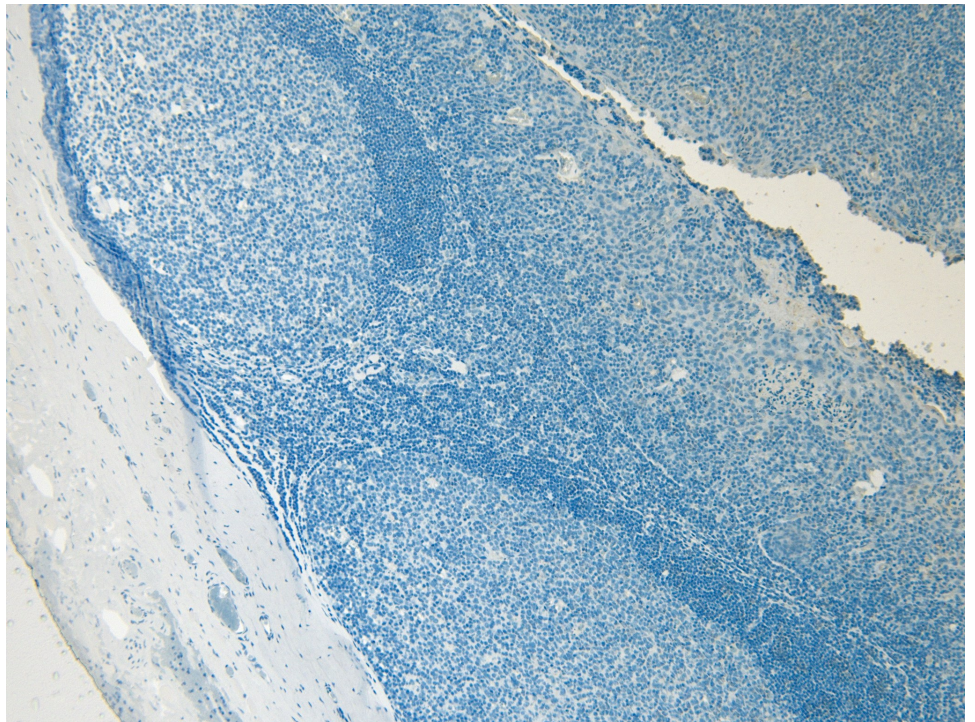
EB07378 (0.3 $\mu$ g/ml) staining of MCF7 (A) HEK293 (B) and MCF7 nuclear (C) cell lysate (35 $\mu$ g protein in RIPA buffer). Detected by chemiluminescence.



EB07378 Flow cytometric analysis of paraformaldehyde fixed HEK293 cells (blue line), permeabilized with 0.5% Triton. Primary incubation 1hr (10 $\mu$ g/ml) followed by Alexa Fluor 488 secondary antibody (1 $\mu$ g/ml). IgG control: Unimmunized goat IgG (black line) followed by Alexa Fluor 488 secondary antibody.



EB07378 (8µg/ml) staining of paraffin embedded Human Tonsil. Heat induced antigen retrieval with citrate buffer pH 6, HRP-staining.



EB07378 Negative Control showing staining of paraffin embedded Human Tonsil, with no primary antibody.