



UK Office

Everest Biotech Ltd

Cherwell Innovation Centre
77 Heyford Park
Upper Heyford
Oxfordshire
OX25 5HD
UK

Enquiries:

info@everestbiotech.com

Sales:

sales@everestbiotech.com

Tech support:

support@everestbiotech.com

Tel: +44 (0)1869 238326

www.everestbiotech.com

**Research Use Only. Not for
diagnostic or therapeutic use.**

EB10053 - Goat Anti-SOX3 Antibody

Size: 100µg specific antibody in 200µl



Target Protein

Principal Names: GHDX, MRGH, PHP, PHPX, SOXB, SRY (sex determining region Y)-box 3, transcription factor SOX-3, SOX3

Official Symbol: SOX3

Accession Number(s): NP_005625.2

Human GeneID(s): [6658](#)

Immunogen

Peptide with sequence C-DAASPLPGGRLHGVH, from the C Terminus of the protein sequence according to NP_005625.2.

Please note the [peptide](#) is available for sale.

Purification and Storage

Purified from goat serum by ammonium sulphate precipitation followed by antigen affinity chromatography using the immunizing peptide.

Supplied at 0.5 mg/ml in Tris saline, 0.02% sodium azide, pH7.3 with 0.5% bovine serum albumin.

Aliquot and store at -20°C. Minimize freezing and thawing.

Applications Tested

Peptide ELISA: antibody detection limit dilution 1:8000.

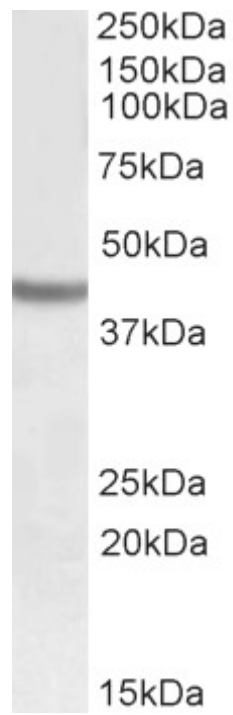
Western blot: Approx 42kDa band observed in Human Brain (Cerebellum, Cerebral Cortex and Frontal Cortex) lysates (calculated MW of 45.2kDa according to NP_005625.2). Recommended concentration: 0.5-1.5µg/ml.

IHC: In paraffin embedded Human Cerebrl Cortex shows nuclear staining at various intensities along the neuronal cells. Recommended concentration, 3-5µg/ml.

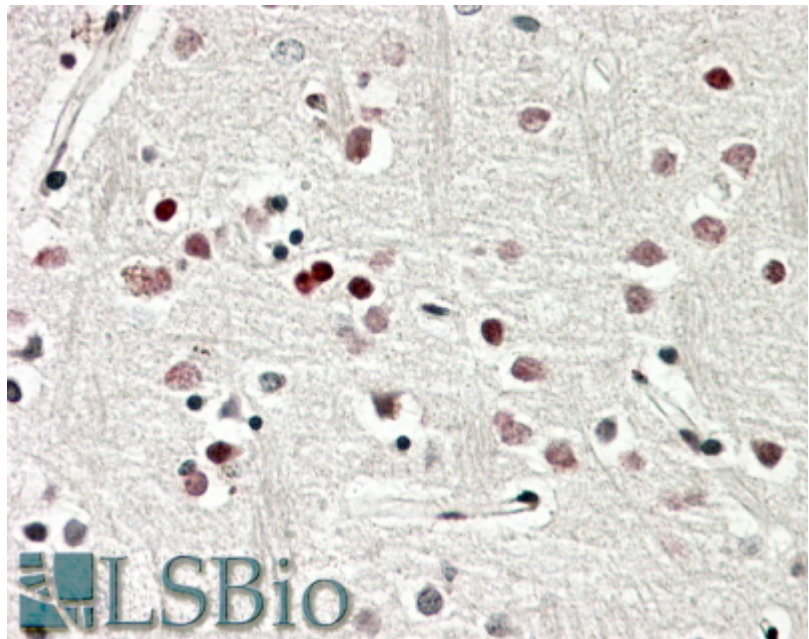
Species Reactivity

Tested: Human

Expected from sequence similarity: Human, Mouse, Rat, Dog



EB10053 (0.5 μ g/ml) staining of Human Cerebral Cortex lysate (35 μ g protein in RIPA buffer). Primary incubation was 1 hour. Detected by chemiluminescence.



EB10053 (3.8 μ g/ml) staining of paraffin embedded Human Cerebral Cortex. Steamed antigen retrieval with citrate buffer pH 6, AP-staining.