



UK Office

Everest Biotech Ltd

Cherwell Innovation Centre
77 Heyford Park
Upper Heyford
Oxfordshire
OX25 5HD
UK

Enquiries:

info@everestbiotech.com

Sales:

sales@everestbiotech.com

Tech support:

support@everestbiotech.com

Tel: +44 (0)1869 238326

www.everestbiotech.com

**Research Use Only. Not for
diagnostic or therapeutic use.**

EB11443 - Goat Anti-Sox9b (zebrafish aa248-259) Antibody

Size: 100µg specific antibody in 200µl



Target Protein

Principal Names: fb18d01, SRY-box containing gene 9b, wu:fb18d01, sox9b

Official Symbol: Sox9b

Accession Number(s): NP_571719.1

Important Comments: No cross-reactivity with Sox9a

Immunogen

Peptide with sequence C-PLQDGIDFGAVD, from the internal region of the protein sequence according to NP_571719.1.

Please note the [peptide](#) is available for sale.

Purification and Storage

Purified from goat serum by ammonium sulphate precipitation followed by antigen affinity chromatography using the immunizing peptide.

Supplied at 0.5 mg/ml in Tris saline, 0.02% sodium azide, pH7.3 with 0.5% bovine serum albumin.

Aliquot and store at -20°C. Minimize freezing and thawing.

Applications Tested

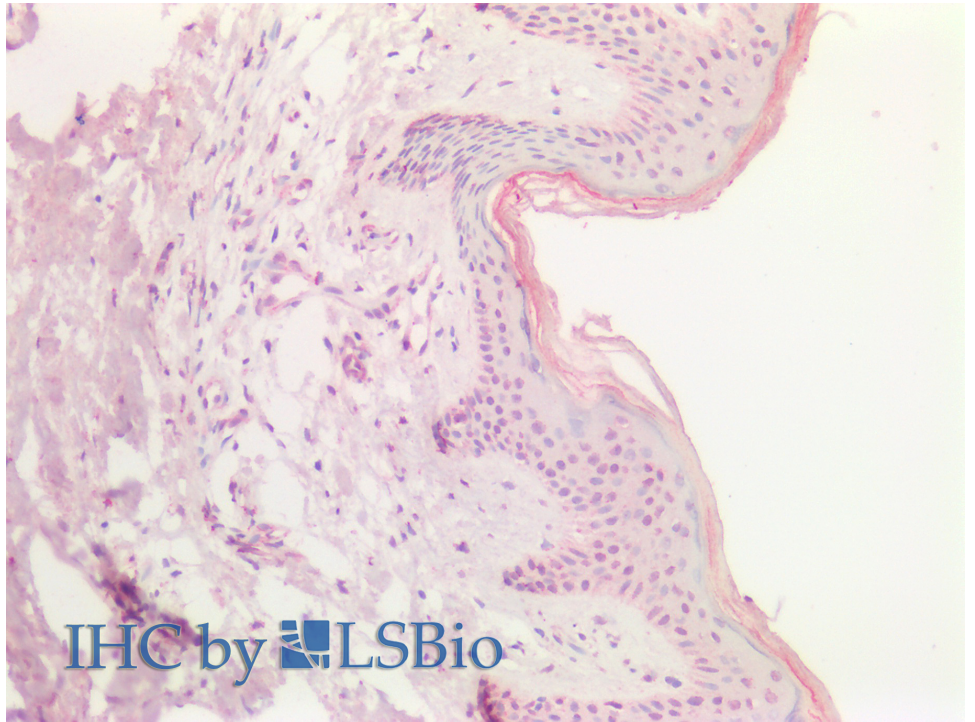
Peptide ELISA: antibody detection limit dilution 1:64000.

IHC: Paraffin embedded Human Skin. Recommended concentration: 5µg/ml.

Species Reactivity

Tested: Human

Expected from sequence similarity: Zebrafish



EB11443 (5 μ g/ml) staining of paraffin embedded Human Skin. Steamed antigen retrieval with citrate buffer pH 6, AP-staining.