



UK Office

Everest Biotech Ltd

Cherwell Innovation Centre
77 Heyford Park
Upper Heyford
Oxfordshire
OX25 5HD
UK

Enquiries:

info@everestbiotech.com

Sales:

sales@everestbiotech.com

Tech support:

support@everestbiotech.com

Tel: +44 (0)1869 238326

www.everestbiotech.com

**Research Use Only. Not for
diagnostic or therapeutic use.**

EB06834-T - Goat Anti-SP1 Antibody - Trial

Size: 20µg specific antibody in 40µl



Target Protein

Principal Names: SP1, Sp1 transcription factor, HGNC:11205, specificity protein 1

Official Symbol: SP1

Accession Number(s): NP_612482.2; NP_003100.1

Human GeneID(s): [6667](#)

Important Comments: This antibody is expected to recognise both reported isoforms (NP_612482.2; NP_003100.1).

Immunogen

Peptide with sequence CSRIESPENSNNSQ, from the internal region of the protein sequence according to NP_612482.2; NP_003100.1.

Please note the [peptide](#) is available for sale.

Purification and Storage

Purified from goat serum by ammonium sulphate precipitation followed by antigen affinity chromatography using the immunizing peptide.

Supplied at 0.5 mg/ml in Tris saline, 0.02% sodium azide, pH7.3 with 0.5% bovine serum albumin.

Aliquot and store at -20°C. Minimize freezing and thawing.

Applications Tested

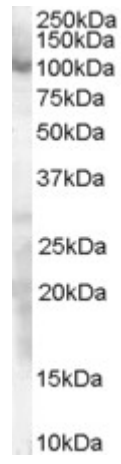
Peptide ELISA: antibody detection limit dilution 1:16000.

Western blot: Approx 100kDa band observed in lysates of cell lines HeLa (calculated MW of 80.7kDa according to NP_612482.2). Recommended concentration: 0.3-1µg/ml. Primary incubated for 1 hour.

Species Reactivity

Tested: Human

Expected from sequence similarity: Human, Mouse, Rat, Dog, Pig, Cow



EB06834 staining (0.3 μ g/ml) of HeLa lysate (RIPA buffer, 30 μ g total protein per lane). Detected by chemiluminescence.