

## UK Office

### Everest Biotech Ltd

Cherwell Innovation Centre  
77 Heyford Park  
Upper Heyford  
Oxfordshire  
OX25 5HD  
UK

Enquiries:

[info@everestbiotech.com](mailto:info@everestbiotech.com)

Sales:

[sales@everestbiotech.com](mailto:sales@everestbiotech.com)

Tech support:

[support@everestbiotech.com](mailto:support@everestbiotech.com)

Tel: +44 (0)1869 238326

[www.everestbiotech.com](http://www.everestbiotech.com)

**Research Use Only. Not for  
diagnostic or therapeutic use.**

## EB06834 - Goat Anti-SP1 Antibody

Size: 100µg specific antibody in 200µl



### Target Protein

**Principal Names:** SP1, Sp1 transcription factor, HGNC:11205, specificity protein 1

**Official Symbol:** SP1

**Accession Number(s):** NP\_612482.2; NP\_003100.1

**Human GeneID(s):** [6667](#)

**Important Comments:** This antibody is expected to recognise both reported isoforms (NP\_612482.2; NP\_003100.1).

### Immunogen

Peptide with sequence CSRIESPENSNNSQ, from the internal region of the protein sequence according to NP\_612482.2; NP\_003100.1.

Please note the [peptide](#) is available for sale.

### Purification and Storage

Purified from goat serum by ammonium sulphate precipitation followed by antigen affinity chromatography using the immunizing peptide.

Supplied at 0.5 mg/ml in Tris saline, 0.02% sodium azide, pH7.3 with 0.5% bovine serum albumin.

Aliquot and store at -20°C. Minimize freezing and thawing.

### Applications Tested

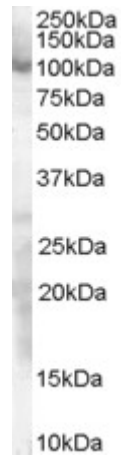
**Peptide ELISA:** antibody detection limit dilution 1:16000.

**Western blot:** Approx 100kDa band observed in lysates of cell lines HeLa (calculated MW of 80.7kDa according to NP\_612482.2). Recommended concentration: 0.3-1µg/ml. Primary incubated for 1 hour.

### Species Reactivity

**Tested:** Human

**Expected from sequence similarity:** Human, Mouse, Rat, Dog, Pig, Cow



EB06834 staining (0.3 $\mu$ g/ml) of HeLa lysate (RIPA buffer, 30 $\mu$ g total protein per lane). Detected by chemiluminescence.