



## International Office

### Everest Biotech Ltd

Vector Laboratories, Inc.  
6737 Mowry Ave  
Newark, CA 94560  
United States

Customer Service:

[customerservice@vectorlabs.com](mailto:customerservice@vectorlabs.com)

Technical Service:

[technical@vectorlabs.com](mailto:technical@vectorlabs.com)

Tel: +1 (800) 227-6666

[www.everestbiotech.com](http://www.everestbiotech.com)

**Research Use Only. Not for  
diagnostic or therapeutic use.**

## EB12527 - Goat Anti-SP140 (aa29-41) Antibody

Size: 100µg specific antibody in 200µl



### Target Protein

**Principal Names:** SP140, SP140 nuclear body protein, LYSP100, LYSP100-A, LYSP100-B, lymphoid-restricted homolog of Sp100, lymphoid-specific SP100 homolog, nuclear autoantigen Sp-140, nuclear body protein SP140, speckled 140 kDa

**Official Symbol:** SP140

**Accession Number(s):** NP\_009168.4; NP\_001005176.1; NP\_001265380.1; NP\_001265381.1; NP\_001265382.1

**Human GeneID(s):** [11262](#)

**Important Comments:** This antibody is expected to recognize all reported isoforms (NP\_009168.4; NP\_001005176.1; NP\_001265380.1; NP\_001265381.1; NP\_001265382.1).

### Immunogen

Peptide with sequence EGQNLQEQVCPEP, from the N-Terminus of the protein sequence according to NP\_009168.4; NP\_001005176.1; NP\_001265380.1; NP\_001265381.1; NP\_001265382.1.

Please note the [peptide](#) is available for sale.

### Purification and Storage

Purified from goat serum by ammonium sulphate precipitation followed by antigen affinity chromatography using the immunizing peptide.

Supplied at 0.5 mg/ml in Tris saline, 0.02% sodium azide, pH7.3 with 0.5% bovine serum albumin.

Aliquot and store at -20°C. Minimize freezing and thawing.

### Applications Tested

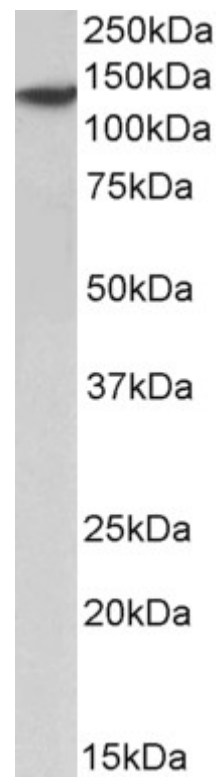
**Peptide ELISA:** antibody detection limit dilution 1:128000.

**Western blot:** Approx 140kDa band observed in Human Spleen lysates (calculated MW of 98.2kDa according to NP\_009168.4). Recommended concentration: 1-3µg/ml.

### Species Reactivity

**Tested:** Human

**Expected from sequence similarity:** Human



EB12527 (2 $\mu$ g/ml) staining of Human Spleen lysate (35 $\mu$ g protein in RIPA buffer). Primary incubation was 1 hour. Detected by chemiluminescence.