



## UK Office

### Everest Biotech Ltd

Cherwell Innovation Centre  
77 Heyford Park  
Upper Heyford  
Oxfordshire  
OX25 5HD  
UK

Enquiries:

[info@everestbiotech.com](mailto:info@everestbiotech.com)

Sales:

[sales@everestbiotech.com](mailto:sales@everestbiotech.com)

Tech support:

[support@everestbiotech.com](mailto:support@everestbiotech.com)

Tel: +44 (0)1869 238326

Fax: +44 (0)1869 238327

## US Office

### Everest Biotech c/o Abcore

405 Maple Street, Suite A106  
Ramona,  
CA 92065  
USA

Inquiries:

[info@everestbiotech.com](mailto:info@everestbiotech.com)

Sales:

[usasales@everestbiotech.com](mailto:usasales@everestbiotech.com)

Tech support:

[support@everestbiotech.com](mailto:support@everestbiotech.com)

Tel: 888-320-4628 (toll-free)

Fax: 888-841-9041

[www.everestbiotech.com](http://www.everestbiotech.com)

**Research Use Only. Not for  
diagnostic or therapeutic use.**

## EB06260 - Goat Anti-SPA1 / SIPA1 Antibody

Size: 100µg specific antibody in 200µl



### Target Protein

**Principal Names:** SIPA1, SPA1, MGC17037, signal-induced proliferation-associated gene 1, p130 SPA-1, GTPase-activating protein Spa-1, signal-induced proliferation-associated 1, MGC102688, signal-induced proliferation-associated gene 1, signal-induced proliferation-associated protein 1

**Official Symbol:** SIPA1

**Accession Number(s):** NP\_694985.28; NP\_006738.3

**Human GeneID(s):** [6494](#)

**Important Comments:** Both variants represent identical protein (NP\_694985.28 and NP\_006738.3).

### Immunogen

Peptide with sequence C-ASKQLGSPTADLA, from the C Terminus of the protein sequence according to NP\_694985.28; NP\_006738.3.

Please note the [peptide](#) is available for sale.

### Purification and Storage

Purified from goat serum by ammonium sulphate precipitation followed by antigen affinity chromatography using the immunizing peptide.

Supplied at 0.5 mg/ml in Tris saline, 0.02% sodium azide, pH7.3 with 0.5% bovine serum albumin.

Aliquot and store at -20°C. Minimize freezing and thawing.

### Applications Tested

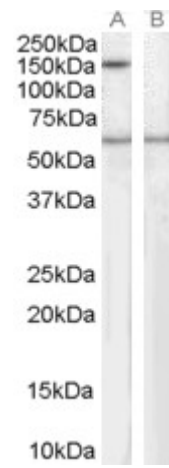
**Peptide ELISA:** antibody detection limit dilution 1:32000.

**Western blot:** Approx. 150kDa band observed in Human lysates of EBV-immortalized lymphoblastoid (calculated MW of 112kDa according to NP\_694985.28 and NP\_006738.2). The observed molecular weight corresponds to earlier findings in literature with different antibodies (Kurachi et al, J Biol Chem. 1997 Oct 31;272(44):28081-8; PMID: 9346962). Recommended concentration: 1-3µg/ml. An additional band of 55-60kDa was consistently observed, however this band was not blocked by the immunizing peptide and it is therefore a non-specific signal. We call for caution when this product is used for other assays than Western blot.

### Species Reactivity

**Tested:** Human

**Expected from sequence similarity:** Human



EB06260 staining (1µg/ml) of Human EBV-immortalized lymphoblastoid lysate (RIPA buffer, 35µg total protein per lane). Primary incubated for 1 hour. Detected by western blot using chemiluminescence.