



UK Office

Everest Biotech Ltd

Cherwell Innovation Centre
77 Heyford Park
Upper Heyford
Oxfordshire
OX25 5HD
UK

Enquiries:

info@everestbiotech.com

Sales:

sales@everestbiotech.com

Tech support:

support@everestbiotech.com

Tel: +44 (0)1869 238326

www.everestbiotech.com

**Research Use Only. Not for
diagnostic or therapeutic use.**

EB09826 - Goat Anti-SPAG16 (aa139-152) Antibody

Size: 100µg specific antibody in 200µl



Target Protein

Principal Names: DKFZp666P1710, FLJ22724, FLJ37717, MGC87036, PF20, sperm associated antigen 16, sperm-associated WD repeat protein, WD repeat domain 29, WDR29, SPAG16

Official Symbol: SPAG16

Accession Number(s): NP_078808.3; NP_001020607.1

Human GeneID(s): [79582](#)

Important Comments: This antibody is expected to recognize isoform 1 and 2 (NP_078808.3; NP_001020607.1).

Immunogen

Peptide with sequence C-KGVTELRTVGNVDP, from the internal region of the protein sequence according to NP_078808.3; NP_001020607.1.

Please note the [peptide](#) is available for sale.

Purification and Storage

Purified from goat serum by ammonium sulphate precipitation followed by antigen affinity chromatography using the immunizing peptide.

Supplied at 0.5 mg/ml in Tris saline, 0.02% sodium azide, pH7.3 with 0.5% bovine serum albumin.

Aliquot and store at -20°C. Minimize freezing and thawing.

Applications Tested

Peptide ELISA: antibody detection limit dilution 1:16000.

IHC: This antibody was successfully used in Human and Murine frozen Brain sections (PMID: 25086173).

Immunofluorescence: Strong expression of the protein seen in the cytoplasm of A431 cells. Recommended concentration: 10µg/ml.

Flow Cytometry: Flow cytometric analysis of A431 cells. Recommended concentration: 10ug/ml.

Species Reactivity

Tested: Human, Mouse

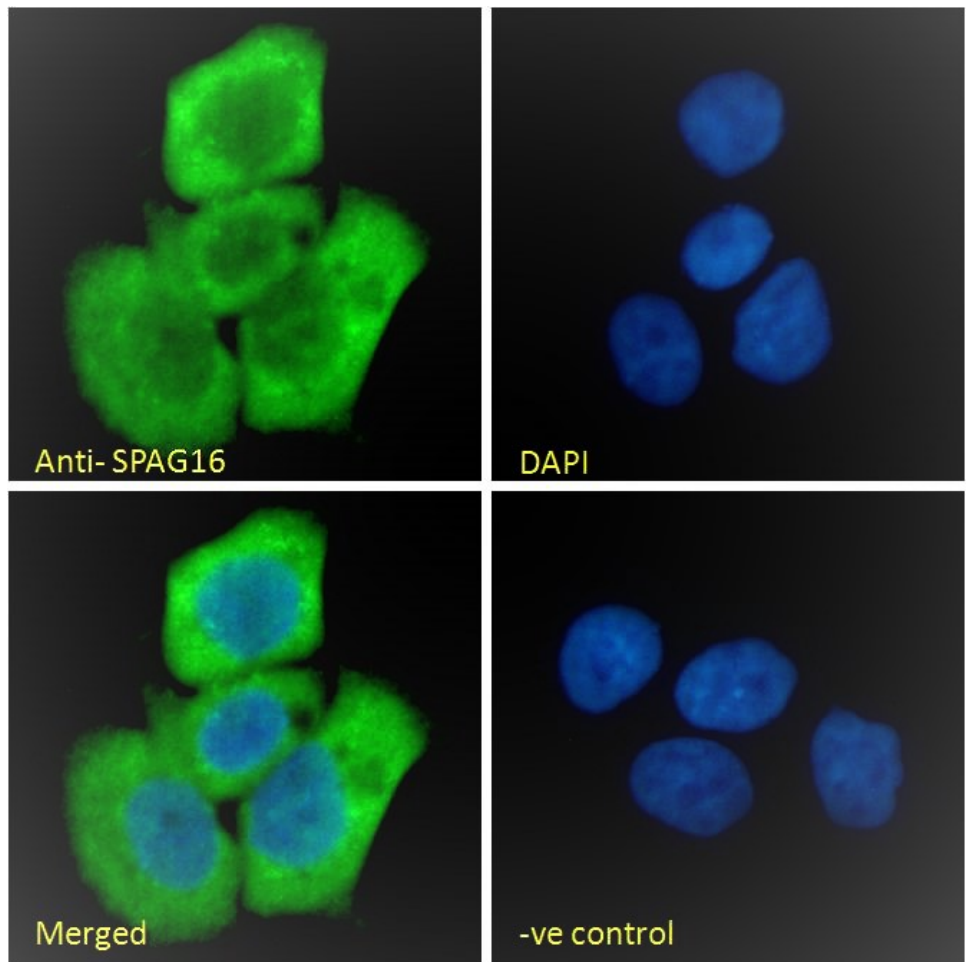
Expected from sequence similarity: Human, Dog, Cow

Specific Reference

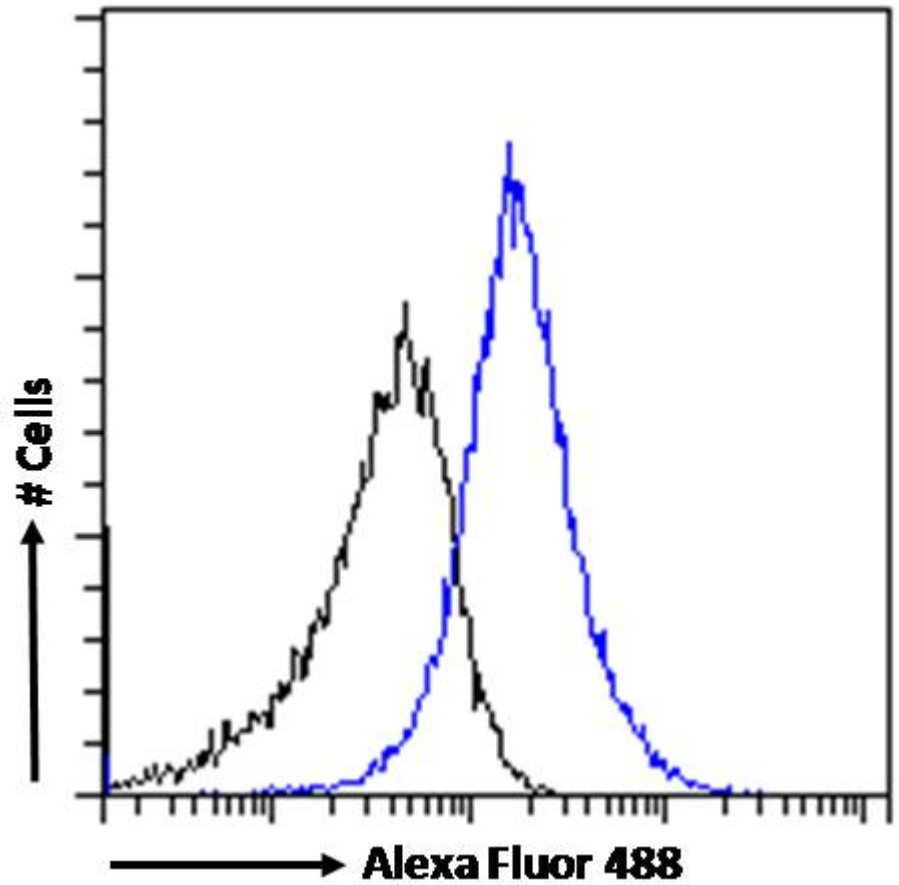
de Bock L, Somers K, Fraussen J, Hendriks JJ, van Horssen J, Rouwette M, Hellings N, Villar LM, Alvarez-Cermeño JC, Espiño M, Hupperts R, Jongen P, Damoiseaux J, Verbeek MM, De Deyn PP, D'hooghe M, Van Wijmeersch B, Stinissen P, Somers V. Sperm-associated antigen 16 is a novel target of the humoral autoimmune response in multiple sclerosis.

J Immunol. 2014 Sep 1;193(5):2147-56.

PMID: 25086173



EB09826 Immunofluorescence analysis of paraformaldehyde fixed A431 cells, permeabilized with 0.15% Triton. Primary incubation 1hr (10ug/ml) followed by Alexa Fluor 488 secondary antibody (2ug/ml), showing cytoplasmic staining. The nuclear stain is DAPI (blue). Negative control: Unimmunized goat IgG (10ug/ml) followed by Alexa Fluor 488 secondary antibody (2ug/ml).



EB09826 Flow cytometric analysis of paraformaldehyde fixed A431 cells (blue line), permeabilized with 0.5% Triton. Primary incubation 1hr (10ug/ml) followed by Alexa Fluor 488 secondary antibody (1ug/ml). IgG control: Unimmunized goat IgG (black line) followed by Alexa Fluor 488 secondary antibody.