



International Office

Everest Biotech Ltd

Vector Laboratories, Inc.
6737 Mowry Ave
Newark, CA 94560
United States

Customer Service:

customerservice@vectorlabs.com

Technical Service:

technical@vectorlabs.com

Tel: +1 (800) 227-6666

www.everestbiotech.com

**Research Use Only. Not for
diagnostic or therapeutic use.**

EB09825 - Goat Anti-SPAG16 Antibody

Size: 100µg specific antibody in 200µl



Target Protein

Principal Names: DKFZp666P1710, FLJ22724, FLJ37717, MGC87036, PF20, sperm associated antigen 16, sperm-associated WD repeat protein, WD repeat domain 29, WDR29, SPAG16

Official Symbol: SPAG16

Accession Number(s): NP_078808.3

Human GeneID(s): [79582](#)

Non-Human GeneID(s): 66722 (mouse)

Important Comments: This antibody is expected to recognize isoform 1 (NP_078808.3) only.

Immunogen

Peptide with sequence C-KLHYASYEPTIR, from the internal region of the protein sequence according to NP_078808.3.

Please note the [peptide](#) is available for sale.

Purification and Storage

Purified from goat serum by ammonium sulphate precipitation followed by antigen affinity chromatography using the immunizing peptide.

Supplied at 0.5 mg/ml in Tris saline, 0.02% sodium azide, pH7.3 with 0.5% bovine serum albumin.

Aliquot and store at -20°C. Minimize freezing and thawing.

Applications Tested

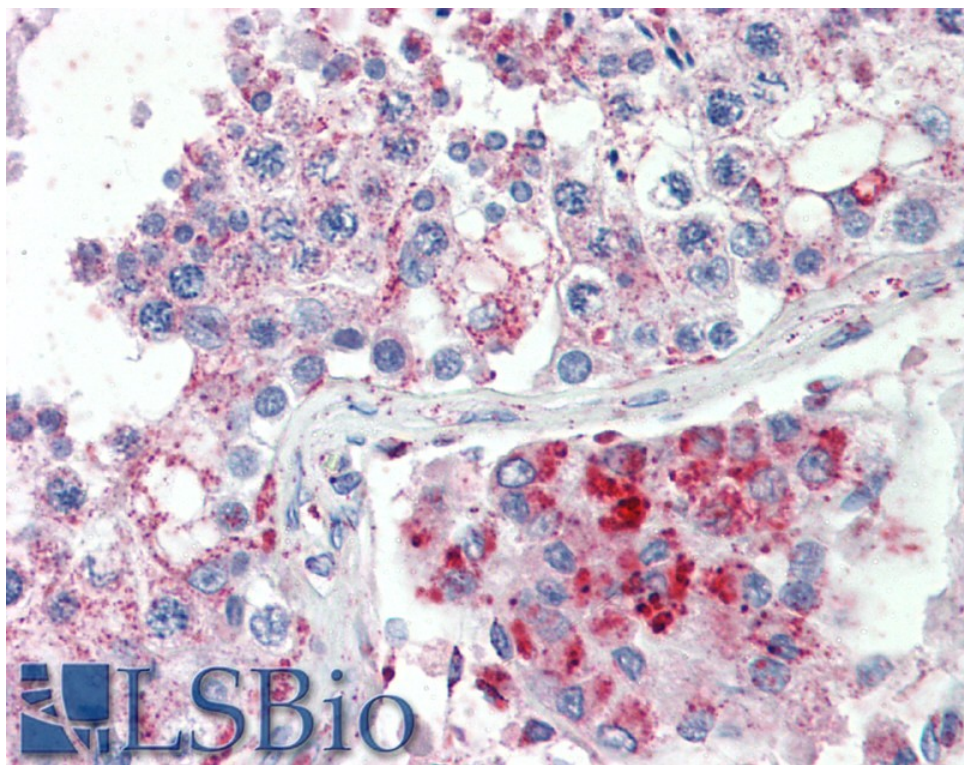
Peptide ELISA: antibody detection limit dilution 1:32000.

IHC: Paraffin embedded Human Testis. Recommended concentration: 5µg/ml.

Species Reactivity

Tested: Human

Expected from sequence similarity: Human, Mouse, Dog, Cow



EB09825 (5µg/ml) staining of paraffin embedded Human Testis. Steamed antigen retrieval with citrate buffer pH 6, AP-staining.