



UK Office

Everest Biotech Ltd

Cherwell Innovation Centre
77 Heyford Park
Upper Heyford
Oxfordshire
OX25 5HD
UK

Enquiries:

info@everestbiotech.com

Sales:

sales@everestbiotech.com

Tech support:

support@everestbiotech.com

Tel: +44 (0)1869 238326

www.everestbiotech.com

**Research Use Only. Not for
diagnostic or therapeutic use.**

EB09136 - Goat Anti-SPARTIN Antibody

Size: 100µg specific antibody in 200µl



Target Protein

Principal Names: SPG20, spastic paraplegia 20 (Troyer syndrome), KIAA0610, SPARTIN, TAHCCP1, OTTHUMP00000018254, spastic paraplegia 20, spastic paraplegia 20, spartin (Troyer syndrome), trans-activated by hepatitis C virus core protein 1

Official Symbol: SPART

Accession Number(s): NP_055902.1

Human GeneID(s): [23111](#)

Immunogen

Peptide with sequence C-EASGTDVKQLDQGNK, from the internal region of the protein sequence according to NP_055902.1.

Please note the [peptide](#) is available for sale.

Purification and Storage

Purified from goat serum by ammonium sulphate precipitation followed by antigen affinity chromatography using the immunizing peptide.

Supplied at 0.5 mg/ml in Tris saline, 0.02% sodium azide, pH7.3 with 0.5% bovine serum albumin.

Aliquot and store at -20°C. Minimize freezing and thawing.

Applications Tested

Peptide ELISA: antibody detection limit dilution 1:8000.

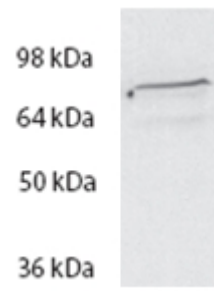
Western blot: Approx 70kDa band observed in lysates of cell line HeLa (calculated MW of 72.8kDa according to NP_055902.1). Recommended concentration: 1-3µg/ml.

Immunofluorescence: HeLa show diminished signals after knock down of expression by introduction of siRNA.

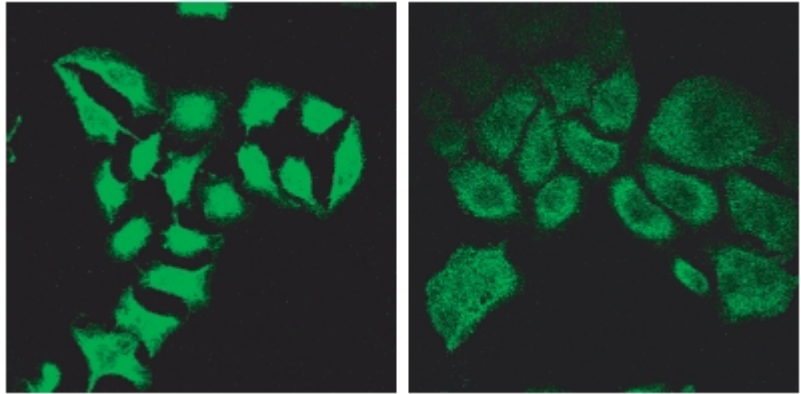
Species Reactivity

Tested: Human

Expected from sequence similarity: Human



EB09136 (2 μ g/ml) staining of HeLa lysate (35 μ g protein in RIPA buffer). Primary incubation was 1 hour. Detected by chemiluminescence.



EB09136 (2 μ g/ml) staining of methanol-fixed HeLa before (left) and after (right) introduction of siRNA.