



## UK Office

### Everest Biotech Ltd

Cherwell Innovation Centre  
77 Heyford Park  
Upper Heyford  
Oxfordshire  
OX25 5HD  
UK

Enquiries:

[info@everestbiotech.com](mailto:info@everestbiotech.com)

Sales:

[sales@everestbiotech.com](mailto:sales@everestbiotech.com)

Tech support:

[support@everestbiotech.com](mailto:support@everestbiotech.com)

Tel: +44 (0)1869 238326

Fax: +44 (0)1869 238327

## US Office

### Everest Biotech c/o Abcore

405 Maple Street, Suite A106  
Ramona,  
CA 92065  
USA

Inquiries:

[info@everestbiotech.com](mailto:info@everestbiotech.com)

Sales:

[usasales@everestbiotech.com](mailto:usasales@everestbiotech.com)

Tech support:

[support@everestbiotech.com](mailto:support@everestbiotech.com)

Tel: 888-320-4628 (toll-free)

Fax: 888-841-9041

[www.everestbiotech.com](http://www.everestbiotech.com)

**Research Use Only. Not for  
diagnostic or therapeutic use.**

## EB09136 - Goat Anti-SPARTIN Antibody

Size: 100µg specific antibody in 200µl



### Target Protein

**Principal Names:** SPG20, spastic paraplegia 20 (Troyer syndrome), KIAA0610, SPARTIN, TAHCCP1, OTTHUMP00000018254, spastic paraplegia 20, spastic paraplegia 20, spartin (Troyer syndrome), trans-activated by hepatitis C virus core protein 1

**Official Symbol:** SPART

**Accession Number(s):** NP\_055902.1

**Human GeneID(s):** [23111](#)

### Immunogen

Peptide with sequence C-EASGTDVKQLDQGNK, from the internal region of the protein sequence according to NP\_055902.1.

Please note the [peptide](#) is available for sale.

### Purification and Storage

Purified from goat serum by ammonium sulphate precipitation followed by antigen affinity chromatography using the immunizing peptide.

Supplied at 0.5 mg/ml in Tris saline, 0.02% sodium azide, pH7.3 with 0.5% bovine serum albumin.

Aliquot and store at -20°C. Minimize freezing and thawing.

### Applications Tested

**Peptide ELISA:** antibody detection limit dilution 1:8000.

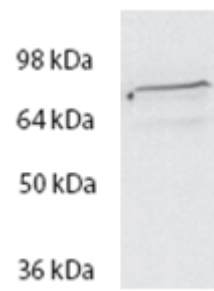
**Western blot:** Approx 70kDa band observed in lysates of cell line HeLa (calculated MW of 72.8kDa according to NP\_055902.1). Recommended concentration: 1-3µg/ml.

**Immunofluorescence:** HeLa show diminished signals after knock down of expression by introduction of siRNA.

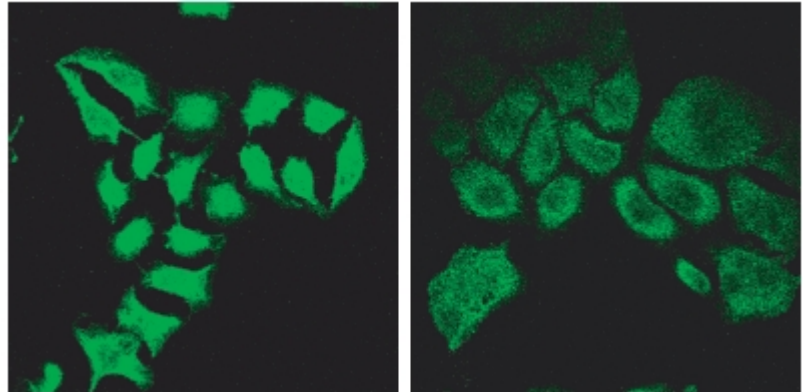
### Species Reactivity

**Tested:** Human

**Expected from sequence similarity:** Human



EB09136 (2 $\mu$ g/ml) staining of HeLa lysate (35 $\mu$ g protein in RIPA buffer). Primary incubation was 1 hour.  
Detected by chemiluminescence.



EB09136 (2 $\mu$ g/ml) staining of methanol-fixed HeLa before (left) and after (right) introduction of siRNA.