



## International Office

### Everest Biotech Ltd

Vector Laboratories, Inc.  
6737 Mowry Ave  
Newark, CA 94560  
United States

Customer Service:

[customerservice@vectorlabs.com](mailto:customerservice@vectorlabs.com)

Technical Service:

[technical@vectorlabs.com](mailto:technical@vectorlabs.com)

Tel: +1 (800) 227-6666

[www.everestbiotech.com](http://www.everestbiotech.com)

**Research Use Only. Not for  
diagnostic or therapeutic use.**

## EB06896 - Goat Anti-SPFH2 / ERLIN2 Antibody

Size: 100µg specific antibody in 200µl



### Target Protein

**Principal Names:** ERLIN2, SPFH2, ER lipid raft associated 2, SPFH domain family, member 2, HGNC:1356, C8orf2, MGC87072, chromosome 8 open reading frame 2, Erlin-2, MGC87072

**Official Symbol:** ERLIN2

**Accession Number(s):** NP\_009106.1

**Human GeneID(s):** [11160](#)

**Non-Human GeneID(s):** 290823 (rat)

**Important Comments:** This antibody is expected to recognise isoform 1 (NP\_009106) only.

### Immunogen

Peptide with sequence C-EDEPLETATKEN, from the C Terminus of the protein sequence according to NP\_009106.1.

Please note the [peptide](#) is available for sale.

### Purification and Storage

Purified from goat serum by ammonium sulphate precipitation followed by antigen affinity chromatography using the immunizing peptide.

Supplied at 0.5 mg/ml in Tris saline, 0.02% sodium azide, pH7.3 with 0.5% bovine serum albumin.

Aliquot and store at -20°C. Minimize freezing and thawing.

### Applications Tested

**Peptide ELISA:** antibody detection limit dilution 1:2000.

**Western blot:** Approx 43kDa band observed in Human Breast lysates and in lysates of Human Breast Cancer (calculated MW of 37.8kDa according to NP\_009106.1). The observed molecular weight corresponds to earlier findings in literature with different antibodies (Pearce et al, J Biol Chem. 2007 Jul 13;282(28):20104-15.; PMID: 17502376). Recommended concentration: 0.3-1µg/ml.

**IHC:** Paraffin embedded Human Breast. Recommended concentration: 3.75µg/ml.

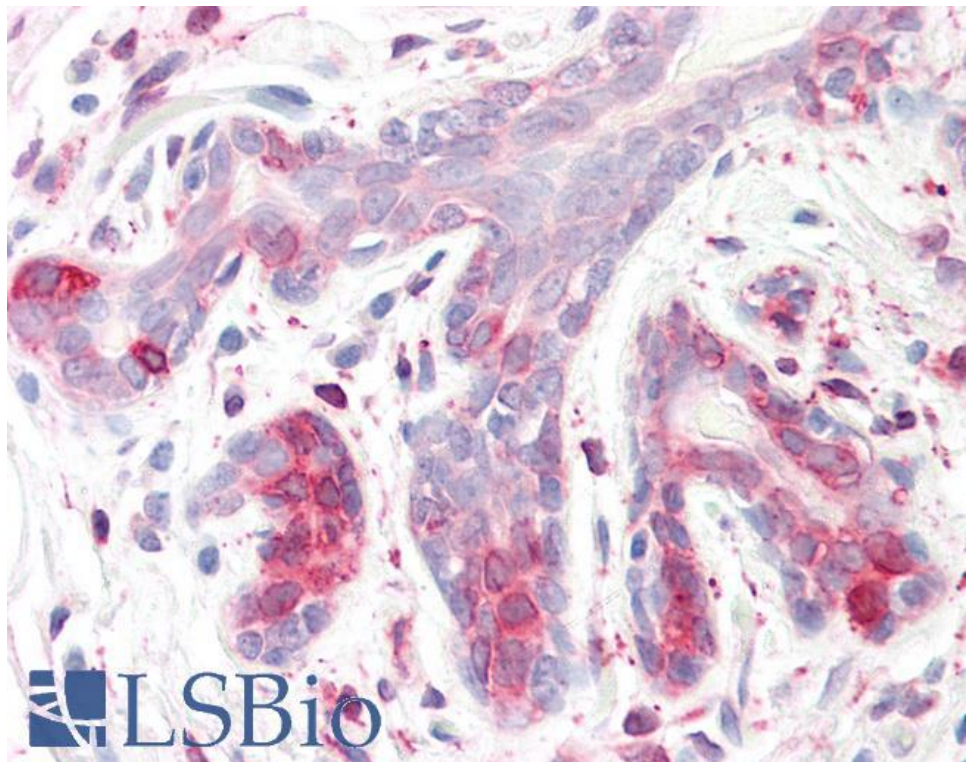
### Species Reactivity

**Tested:** Human

**Expected from sequence similarity:** Human, Rat

250kDa  
150kDa  
100kDa  
75kDa  
50kDa  
37kDa  
  
25kDa  
20kDa  
  
15kDa  
10kDa

EB06896 staining (1 $\mu$ g/ml) of Human Breast lysate (RIPA buffer, 30 $\mu$ g total protein per lane). Primary incubated for 1 hour. Detected by chemiluminescence.



EB06896 (3.75 $\mu$ g/ml) staining of paraffin embedded Human Breast. Steamed antigen retrieval with citrate buffer pH 6, AP-staining.