



UK Office

Everest Biotech Ltd

Cherwell Innovation Centre
77 Heyford Park
Upper Heyford
Oxfordshire
OX25 5HD
UK

Enquiries:

info@everestbiotech.com

Sales:

sales@everestbiotech.com

Tech support:

support@everestbiotech.com

Tel: +44 (0)1869 238326

Fax: +44 (0)1869 238327

US Office

Everest Biotech c/o Abcore

405 Maple Street, Suite A106
Ramona,
CA 92065
USA

Inquiries:

info@everestbiotech.com

Sales:

usasales@everestbiotech.com

Tech support:

support@everestbiotech.com

Tel: 888-320-4628 (toll-free)

Fax: 888-841-9041

www.everestbiotech.com

**Research Use Only. Not for
diagnostic or therapeutic use.**

EB08409 - Goat Anti-SPHK1 Antibody

Size: 100µg specific antibody in 200µl



Target Protein

Principal Names: SPHK1, sphingosine kinase 1, SPHK, SK1, SKase

Official Symbol: SPHK1

Accession Number(s): NP_068807.2; NP_892010.2; NP_001136073.1

Human GeneID(s): [8877](#)

Non-Human GeneID(s): 20698 (mouse), 170897 (rat)

Important Comments: This antibody is expected to recognise all three reported isoforms (NP_068807.2; NP_892010.2; NP_001136073.1). Reported variants represent identical protein (NP_001136073.1; NP_001136074.1).

Immunogen

Peptide with sequence C-DVDLESEKYRRLGE, from the internal region of the protein sequence according to NP_068807.2; NP_892010.2; NP_001136073.1.

Please note the [peptide](#) is available for sale.

Purification and Storage

Purified from goat serum by ammonium sulphate precipitation followed by antigen affinity chromatography using the immunizing peptide.

Supplied at 0.5 mg/ml in Tris saline, 0.02% sodium azide, pH7.3 with 0.5% bovine serum albumin.

Aliquot and store at -20°C. Minimize freezing and thawing.

Applications Tested

Peptide ELISA: antibody detection limit dilution 1:16000.

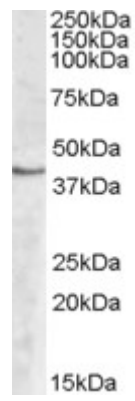
Western blot: Approx. 40 kDa band observed in Human Peripheral Blood Mononucleocyte lysates (calculated MW of 43.9 kDa according to NP_068807.2).
Recommended concentration: 2-3µg/ml.

Immunoprecipitation: EB05266 has been used in nuclear lysates of HeLa cells and a band of ~45kDa band has been detected.

Species Reactivity

Tested: Human

Expected from sequence similarity: Human, Mouse, Rat, Dog, Cow



EB08409 (2µg/ml) staining of Human Peripheral Blood Mononucleocyte lysate (35µg protein in RIPA buffer).
Primary incubation was 1 hour. Detected by chemiluminescence.