



## UK Office

### Everest Biotech Ltd

Cherwell Innovation Centre  
77 Heyford Park  
Upper Heyford  
Oxfordshire  
OX25 5HD  
UK

Enquiries:

[info@everestbiotech.com](mailto:info@everestbiotech.com)

Sales:

[sales@everestbiotech.com](mailto:sales@everestbiotech.com)

Tech support:

[support@everestbiotech.com](mailto:support@everestbiotech.com)

Tel: +44 (0)1869 238326

Fax: +44 (0)1869 238327

## US Office

### Everest Biotech c/o Abcore

405 Maple Street, Suite A106  
Ramona,  
CA 92065  
USA

Inquiries:

[info@everestbiotech.com](mailto:info@everestbiotech.com)

Sales:

[usasales@everestbiotech.com](mailto:usasales@everestbiotech.com)

Tech support:

[support@everestbiotech.com](mailto:support@everestbiotech.com)

Tel: 888-320-4628 (toll-free)

Fax: 888-841-9041

[www.everestbiotech.com](http://www.everestbiotech.com)

**Research Use Only. Not for  
diagnostic or therapeutic use.**

## EB05341 - Goat Anti-Spinesin / TMPRSS5 Antibody

Size: 100µg specific antibody in 200µl



### Target Protein

**Principal Names:** TMPRSS5, SPINESIN, transmembrane protease, serine 5 (spinesin), MGC141886, MGC148044, SPINESIN

**Official Symbol:** TMPRSS5

**Accession Number(s):** NP\_110397.2

**Human GeneID(s):** [80975](#)

### Immunogen

Peptide with sequence C-LDWIHDTAQDSL, from the C Terminus of the protein sequence according to NP\_110397.2.

Please note the [peptide](#) is available for sale.

### Purification and Storage

Purified from goat serum by ammonium sulphate precipitation followed by antigen affinity chromatography using the immunizing peptide.

Supplied at 0.5 mg/ml in Tris saline, 0.02% sodium azide, pH7.3 with 0.5% bovine serum albumin.

Aliquot and store at -20°C. Minimize freezing and thawing.

### Applications Tested

**Peptide ELISA:** antibody detection limit dilution 1:32000.

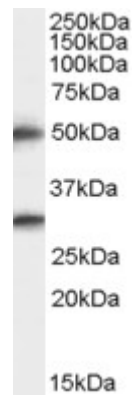
**Western blot:** Experiments gave bands at approx 50kDa and 29kDa in Human Brain (Cerebral Cortex). These bands correspond to earlier findings in literature with different antibodies (Yamaguchi et al, J Biol Chem. 2002 Mar 1;277(9):6806-12; PMID: 11741986). This protein has a calculated MW of 49.6kDa according to NP\_110397.1. Recommended concentration: 0.5-1.5µg/ml.

**IHC:** Paraffin embedded Human Liver and Small Intestine. Recommended concentration: 5µg/ml.

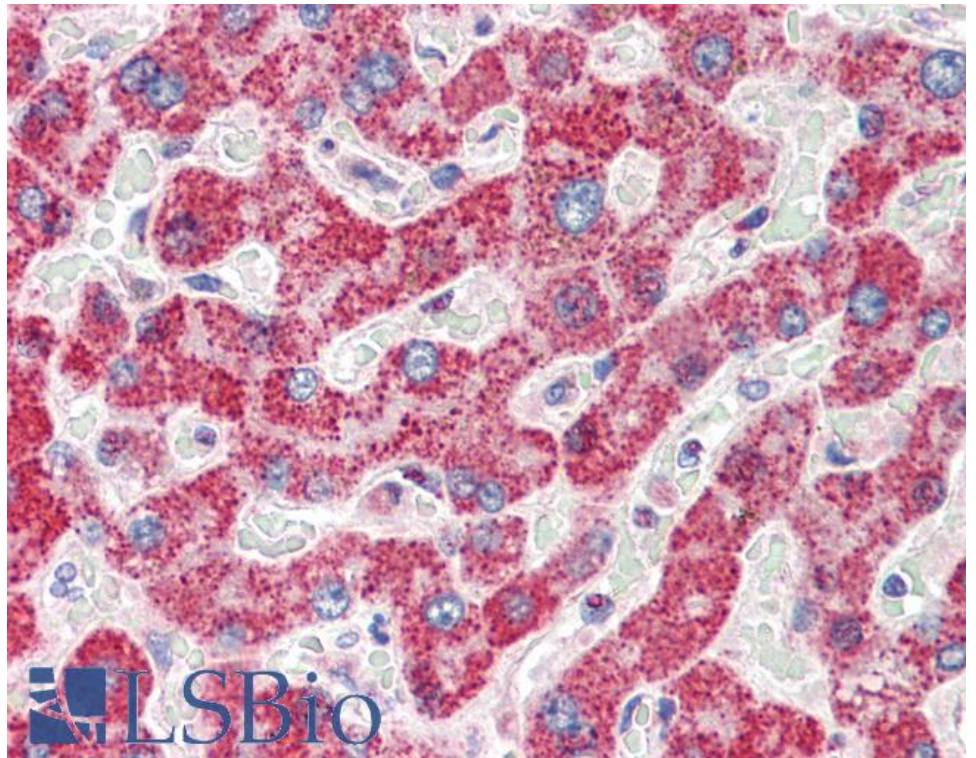
### Species Reactivity

**Tested:** Human

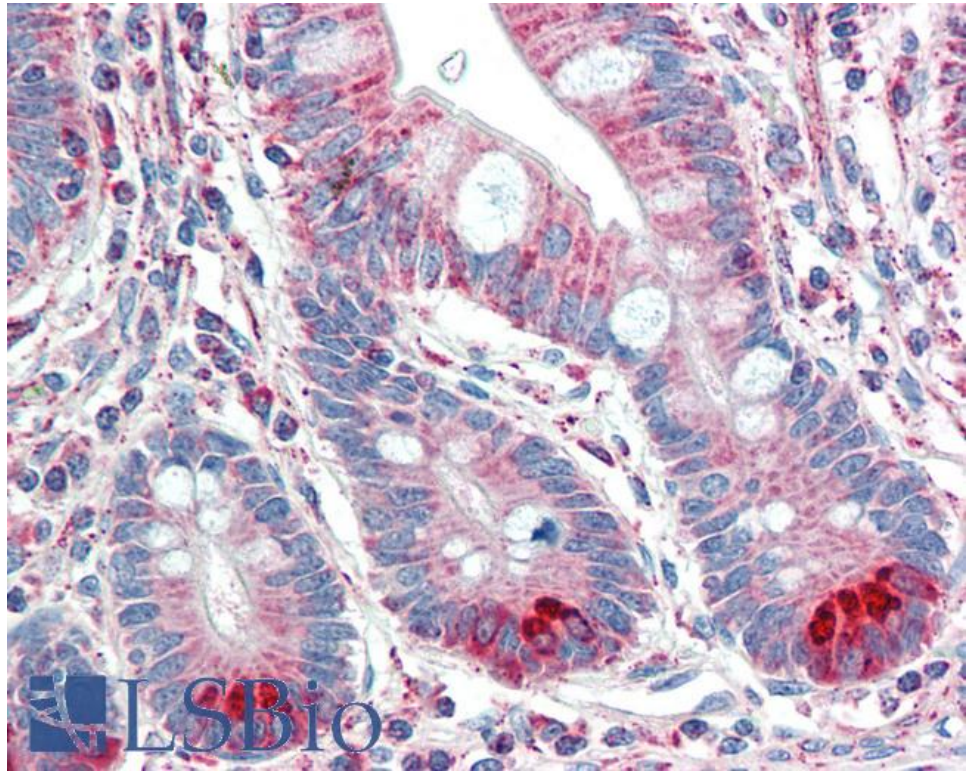
**Expected from sequence similarity:** Human, Dog



EB05341 staining (0.5µg/ml) of Human Brain (Cerebral Cortex) lysate (RIPA buffer, 35µg total protein per lane). Primary incubated for 1 hour. Detected by chemiluminescence.



EB05341 (5µg/ml) staining of paraffin embedded Human Liver. Steamed antigen retrieval with citrate buffer pH 6, AP-staining.



EB05341 (5µg/ml) staining of paraffin embedded Human Small Intestine. Steamed antigen retrieval with citrate buffer pH 6, AP-staining.