



International Office

Everest Biotech Ltd

Vector Laboratories, Inc.
6737 Mowry Ave
Newark, CA 94560
United States

Customer Service:

customerservice@vectorlabs.com

Technical Service:

technical@vectorlabs.com

Tel: +1 (800) 227-6666

www.everestbiotech.com

**Research Use Only. Not for
diagnostic or therapeutic use.**

EB11284 - Goat Anti-SPON2 (301-315) Antibody

Size: 100µg specific antibody in 200µl



Target Protein

Principal Names: differentially expressed in cancerous and non-cancerous lung cells 1, DIL1, DIL-1, DKFZp686G21139, FLJ16313, FLJ22401, FLJ34460, MINDIN, M-SPONDIN, spondin 2, extracellular matrix protein, spondin-2, SPON2

Official Symbol: SPON2

Accession Number(s): NP_036577.1

Human GeneID(s): [10417](#)

Non-Human GeneID(s): 100689 (mouse), 171569 (rat)

Important Comments: Reported variants represent identical protein: NP_036577.1, NP_001121797.1, NP_001185950.1

Immunogen

Peptide with sequence C-RTRYVRVQPANNGSP, from the internal region (near C Terminus) of the protein sequence according to NP_036577.1.

Please note the [peptide](#) is available for sale.

Purification and Storage

Purified from goat serum by ammonium sulphate precipitation followed by antigen affinity chromatography using the immunizing peptide.

Supplied at 0.5 mg/ml in Tris saline, 0.02% sodium azide, pH7.3 with 0.5% bovine serum albumin.

Aliquot and store at -20°C. Minimize freezing and thawing.

Applications Tested

Peptide ELISA: antibody detection limit dilution 1:16000.

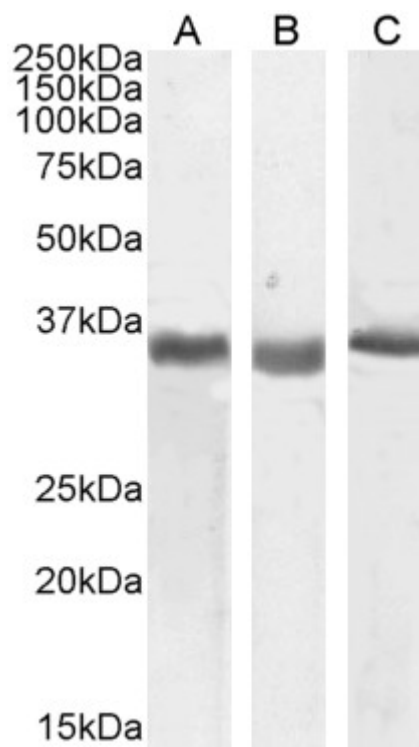
Western blot: Approx 35-36kDa band observed in Human, Mouse and Rat Kidney lysates, and in preliminary testing of A549 cell lysates (calculated MW of 35.8kDa according to Human NP_036577.2, and 36.0kDa according to Mouse NP_598664.3 and Rat NP_612542.1). Recommended concentration: 0.5-2µg/ml. Primary incubation 1 hour at room temperature.

IHC: Paraffin embedded Human Tonsil. Recommended concentration: 5µg/ml.

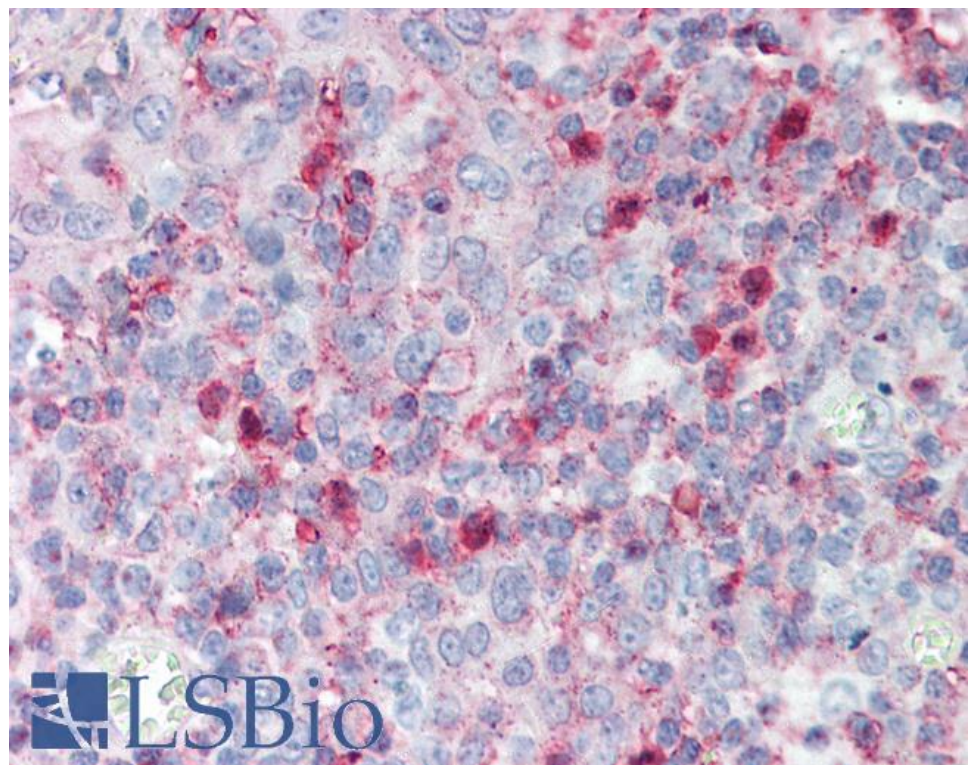
Species Reactivity

Tested: Human, Mouse, Rat

Expected from sequence similarity: Human, Mouse, Rat, Dog



EB11284 (0.5µg/ml) staining of Human (A), Mouse (B) and Rat (C) Kidney lysate (35µg protein in RIPA buffer).
Detected by chemiluminescence.



EB11284 (5µg/ml) staining of paraffin embedded Human Tonsil. Steamed antigen retrieval with citrate buffer pH 6, AP-staining.