



## UK Office

### Everest Biotech Ltd

Cherwell Innovation Centre  
77 Heyford Park  
Upper Heyford  
Oxfordshire  
OX25 5HD  
UK

Enquiries:

[info@everestbiotech.com](mailto:info@everestbiotech.com)

Sales:

[sales@everestbiotech.com](mailto:sales@everestbiotech.com)

Tech support:

[support@everestbiotech.com](mailto:support@everestbiotech.com)

Tel: +44 (0)1869 238326

Fax: +44 (0)1869 238327

## US Office

### Everest Biotech c/o Abcore

405 Maple Street, Suite A106  
Ramona,  
CA 92065  
USA

Inquiries:

[info@everestbiotech.com](mailto:info@everestbiotech.com)

Sales:

[usasales@everestbiotech.com](mailto:usasales@everestbiotech.com)

Tech support:

[support@everestbiotech.com](mailto:support@everestbiotech.com)

Tel: 888-320-4628 (toll-free)

Fax: 888-841-9041

[www.everestbiotech.com](http://www.everestbiotech.com)

**Research Use Only. Not for  
diagnostic or therapeutic use.**

## EB11284 - Goat Anti-SPON2 (301-315) Antibody

Size: 100µg specific antibody in 200µl



### Target Protein

**Principal Names:** differentially expressed in cancerous and non-cancerous lung cells 1, DIL1, DIL-1, DKFZp686G21139, FLJ16313, FLJ22401, FLJ34460, MINDIN, M-SPONDIN, spondin 2, extracellular matrix protein, spondin-2, SPON2

**Official Symbol:** SPON2

**Accession Number(s):** NP\_036577.1

**Human GeneID(s):** [10417](#)

**Non-Human GeneID(s):** 100689 (mouse), 171569 (rat)

**Important Comments:** Reported variants represent identical protein: NP\_036577.1, NP\_001121797.1, NP\_001185950.1

### Immunogen

Peptide with sequence C-RTRYVRVQPANNGSP, from the internal region (near C Terminus) of the protein sequence according to NP\_036577.1.

Please note the [peptide](#) is available for sale.

### Purification and Storage

Purified from goat serum by ammonium sulphate precipitation followed by antigen affinity chromatography using the immunizing peptide.

Supplied at 0.5 mg/ml in Tris saline, 0.02% sodium azide, pH7.3 with 0.5% bovine serum albumin.

Aliquot and store at -20°C. Minimize freezing and thawing.

### Applications Tested

**Peptide ELISA:** antibody detection limit dilution 1:16000.

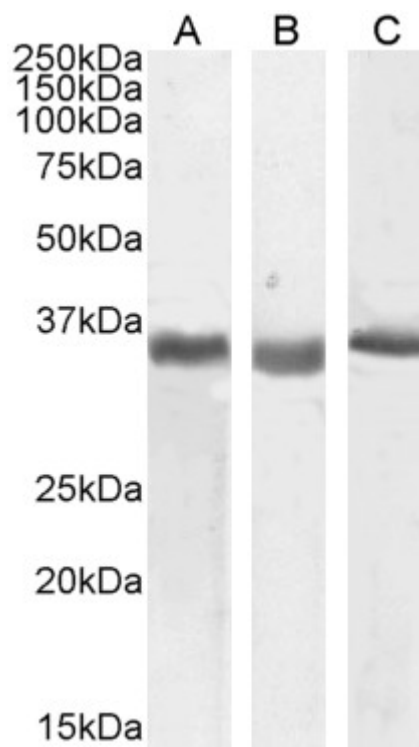
**Western blot:** Approx 35-36kDa band observed in Human, Mouse and Rat Kidney lysates, and in preliminary testing of A549 cell lysates (calculated MW of 35.8kDa according to Human NP\_036577.2, and 36.0kDa according to Mouse NP\_598664.3 and Rat NP\_612542.1). Recommended concentration: 0.5-2µg/ml. Primary incubation 1 hour at room temperature.

**IHC:** Paraffin embedded Human Tonsil. Recommended concentration: 5µg/ml.

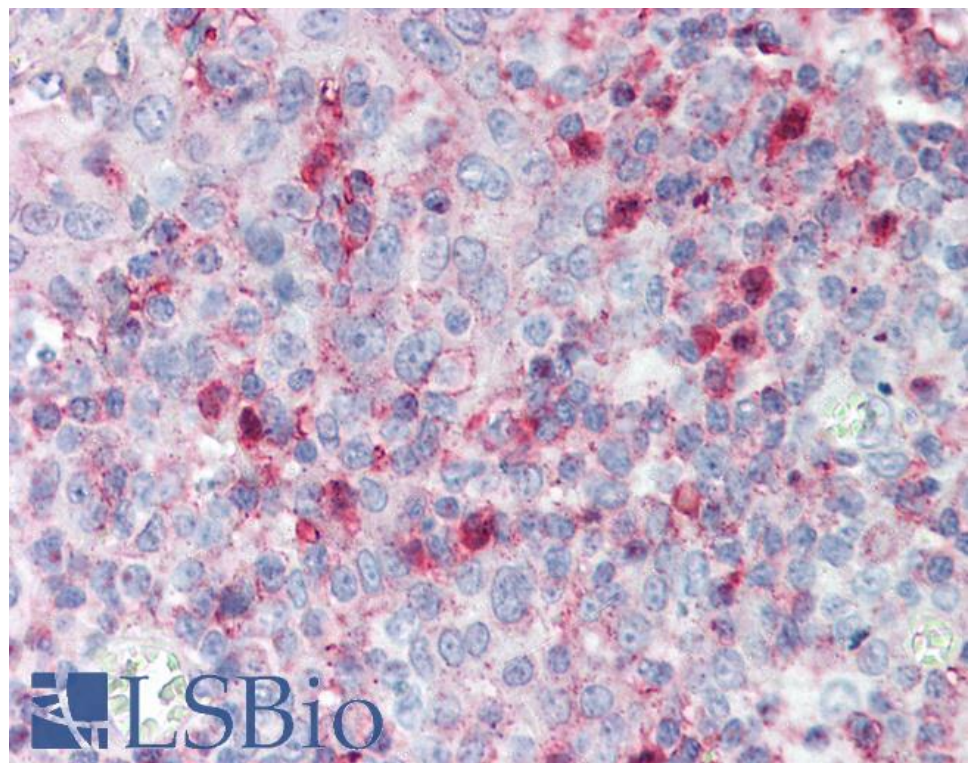
### Species Reactivity

**Tested:** Human, Mouse, Rat

**Expected from sequence similarity:** Human, Mouse, Rat, Dog



EB11284 (0.5µg/ml) staining of Human (A), Mouse (B) and Rat (C) Kidney lysate (35µg protein in RIPA buffer).  
Detected by chemiluminescence.



EB11284 (5µg/ml) staining of paraffin embedded Human Tonsil. Steamed antigen retrieval with citrate buffer pH 6, AP-staining.