



International Office

Everest Biotech Ltd

Vector Laboratories, Inc.
6737 Mowry Ave
Newark, CA 94560
United States

Customer Service:

customerservice@vectorlabs.com

Technical Service:

technical@vectorlabs.com

Tel: +1 (800) 227-6666

www.everestbiotech.com

**Research Use Only. Not for
diagnostic or therapeutic use.**

EB09659 - Goat Anti-SRCAP Antibody

Size: 100µg specific antibody in 200µl



Target Protein

Principal Names: SRCAP, Snf2-related CREBBP activator protein, DOMO1, EAF1, FLJ44499, KIAA0309, SWR1, OTTHUMP00000163226, Snf2-related CBP activator protein, Swi2/Snf2-related ATPase homolog, domino homolog 1

Official Symbol: SRCAP

Accession Number(s): NP_006653.2

Human GeneID(s): [10847](#)

Non-Human GeneID(s): 100043597 (mouse), 361652 (rat)

Immunogen

Peptide with sequence C-DEAQNKNFKSQR, from the internal region of the protein sequence according to NP_006653.2.

Please note the [peptide](#) is available for sale.

Purification and Storage

Purified from goat serum by ammonium sulphate precipitation followed by antigen affinity chromatography using the immunizing peptide.

Supplied at 0.5 mg/ml in Tris saline, 0.02% sodium azide, pH7.3 with 0.5% bovine serum albumin.

Aliquot and store at -20°C. Minimize freezing and thawing.

Applications Tested

Peptide ELISA: antibody detection limit dilution 1:8000.

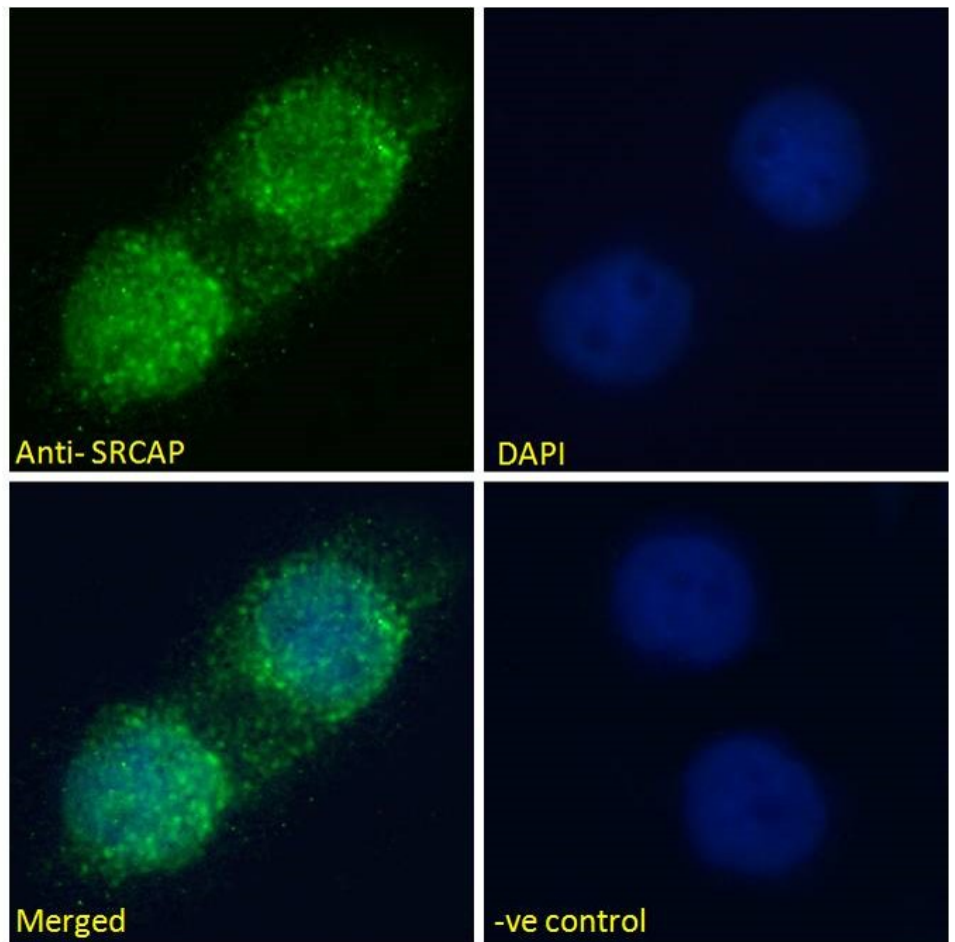
Western blot: Not yet tested - our routine western blotting protocol does not allow for the detection of proteins >250kDa (calculated size of approx. 344kDa according to NP_006653.2).

Immunofluorescence: Strong expression of the protein seen in the Nucleus of A31 cells. Recommended concentration: 10µg/ml.

Species Reactivity

Tested: Human

Expected from sequence similarity: Human, Mouse, Rat, Dog



EB09659 Immunofluorescence analysis of paraformaldehyde fixed A431 cells, permeabilized with 0.15% Triton. Primary incubation 1hr (10ug/ml) followed by Alexa Fluor 488 secondary antibody (2ug/ml), showing nuclear staining. The nuclear stain is DAPI (blue). Negative control: Unimmunized goat IgG (10ug/ml) followed by Alexa Fluor 488 secondary antibody (2ug/ml).