



## UK Office

### Everest Biotech Ltd

Cherwell Innovation Centre  
77 Heyford Park  
Upper Heyford  
Oxfordshire  
OX25 5HD  
UK

Enquiries:

[info@everestbiotech.com](mailto:info@everestbiotech.com)

Sales:

[sales@everestbiotech.com](mailto:sales@everestbiotech.com)

Tech support:

[support@everestbiotech.com](mailto:support@everestbiotech.com)

Tel: +44 (0)1869 238326

[www.everestbiotech.com](http://www.everestbiotech.com)

**Research Use Only. Not for  
diagnostic or therapeutic use.**

## EB06638 - Goat Anti-SRD5A1 / 5-alpha reductase 1 Antibody

Size: 100µg specific antibody in 200µl



### Target Protein

**Principal Names:** SRD5A1, steroid-5-alpha-reductase, alpha polypeptide 1 (3-oxo-5 alpha-steroid delta 4-dehydrogenase alpha 1), 5-alpha reductase, steroid 5-alpha-reductase type I, 3-oxo-5 alpha-steroid delta 4-dehydrogenase alpha 1, steroid-5-alpha-reductase 1

**Official Symbol:** SRD5A1

**Accession Number(s):** NP\_001038.1

**Human GeneID(s):** [6715](#)

### Immunogen

Peptide with sequence ATATGVAEERLLC, from the N Terminus of the protein sequence according to NP\_001038.1.

Please note the [peptide](#) is available for sale.

### Purification and Storage

Purified from goat serum by ammonium sulphate precipitation followed by antigen affinity chromatography using the immunizing peptide.

Supplied at 0.5 mg/ml in Tris saline, 0.02% sodium azide, pH7.3 with 0.5% bovine serum albumin.

Aliquot and store at -20°C. Minimize freezing and thawing.

### Applications Tested

**Peptide ELISA:** antibody detection limit dilution 1:128000.

**IHC:** In paraffin embedded Human Prostate shows reticulate staining in the cytoplasm of secretory cells in the gland. Recommended concentration: 4-6µg/ml. Paraffin embedded Human Liver. Recommended concentration: 5µg/ml.

### Species Reactivity

**Tested:** Human

**Expected from sequence similarity:** Human

### Specific Reference

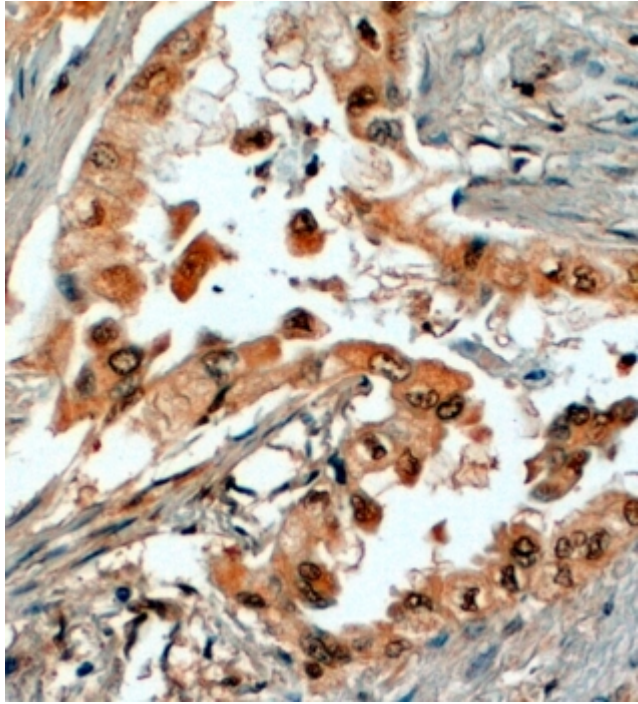
**This antibody (previous batch) has been successfully used in WB in Human:**

Kapp FG, Sommer A, Kiefer T, Dölken G, Haendler B.

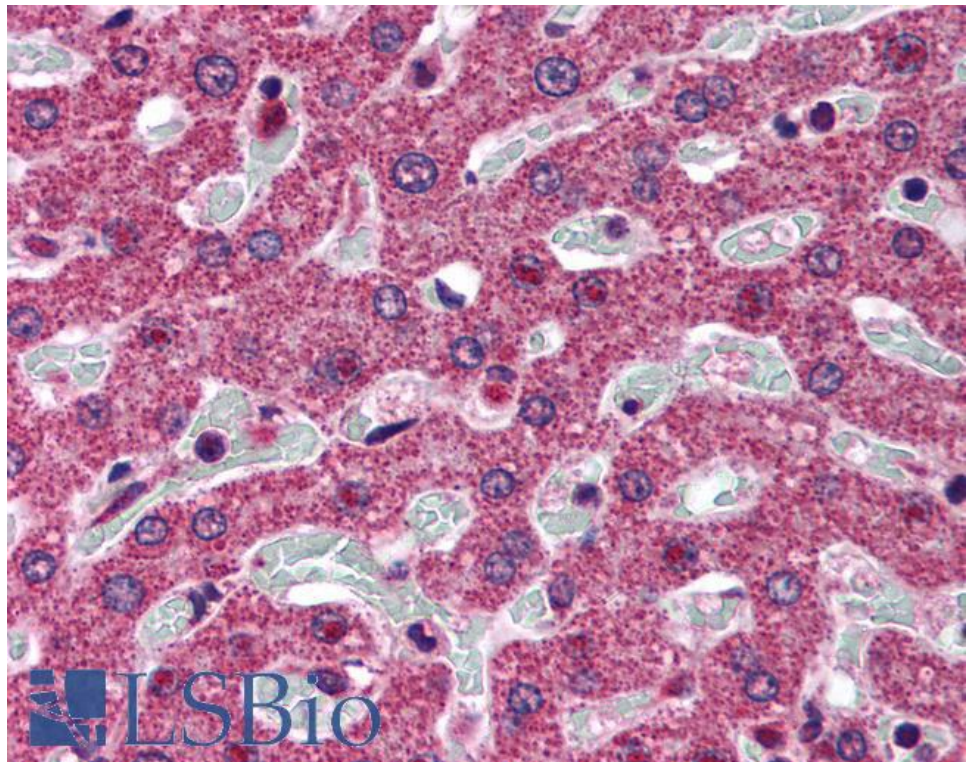
5-alpha-reductase type I (SRD5A1) is up-regulated in non-small cell lung cancer but does not impact proliferation, cell cycle distribution or apoptosis.

Cancer Cell Int. 2012 Jan 18;12(1):1. doi: 10.1186/1475-2867-12-1.

PMID: 22257483



EB06638 (4µg/ml) staining of paraffin embedded Human Prostate. Steamed antigen retrieval with citrate buffer pH 6, HRP-staining.



EB06638 (5µg/ml) staining of paraffin embedded Human Liver. Steamed antigen retrieval with citrate buffer pH 6, AP-staining.