

UK Office

Everest Biotech Ltd

Cherwell Innovation Centre
77 Heyford Park
Upper Heyford
Oxfordshire
OX25 5HD
UK

Enquiries:

info@everestbiotech.com

Sales:

sales@everestbiotech.com

Tech support:

support@everestbiotech.com

Tel: +44 (0)1869 238326

www.everestbiotech.com

**Research Use Only. Not for
diagnostic or therapeutic use.**

EB09209 - Goat Anti-SRD5A1 Antibody

Size: 100µg specific antibody in 200µl



Target Protein

Principal Names: SRD5A1, steroid-5-alpha-reductase, alpha polypeptide 1 (3-oxo-5 alpha-steroid delta 4-dehydrogenase alpha 1), 3-oxo-5 alpha-steroid delta 4-dehydrogenase alpha 1, 5-alpha reductase, OTTHUMP00000115519, steroid 5-alpha-reductase type I, steroid-5-alpha-reductase

Official Symbol: SRD5A1

Accession Number(s): NP_001038.1

Human GeneID(s): [6715](#)

Non-Human GeneID(s): 78925 (mouse)

Immunogen

Peptide with sequence C-RNLRKPGDTGYK, from the internal region of the protein sequence according to NP_001038.1.

Please note the [peptide](#) is available for sale.

Purification and Storage

Purified from goat serum by ammonium sulphate precipitation followed by antigen affinity chromatography using the immunizing peptide.

Supplied at 0.5 mg/ml in Tris saline, 0.02% sodium azide, pH7.3 with 0.5% bovine serum albumin.

Aliquot and store at -20°C. Minimize freezing and thawing.

Applications Tested

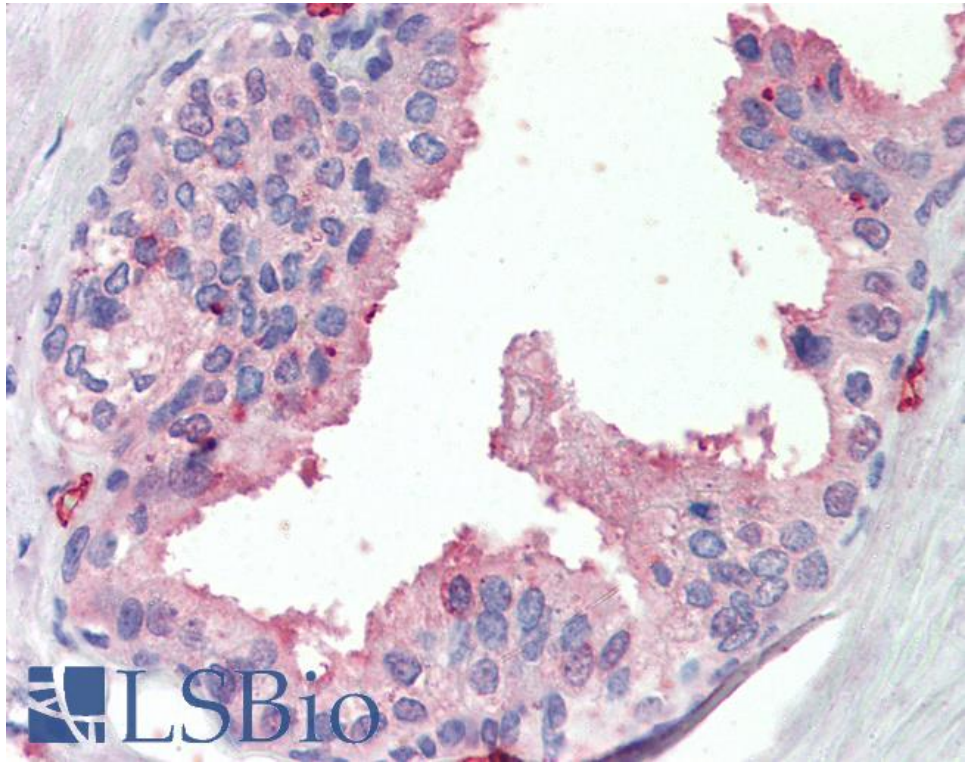
Peptide ELISA: antibody detection limit dilution 1:1000.

IHC: Paraffin embedded Human Prostate, Liver and Small Intestine. Recommended concentration: 3.75ug/ml.

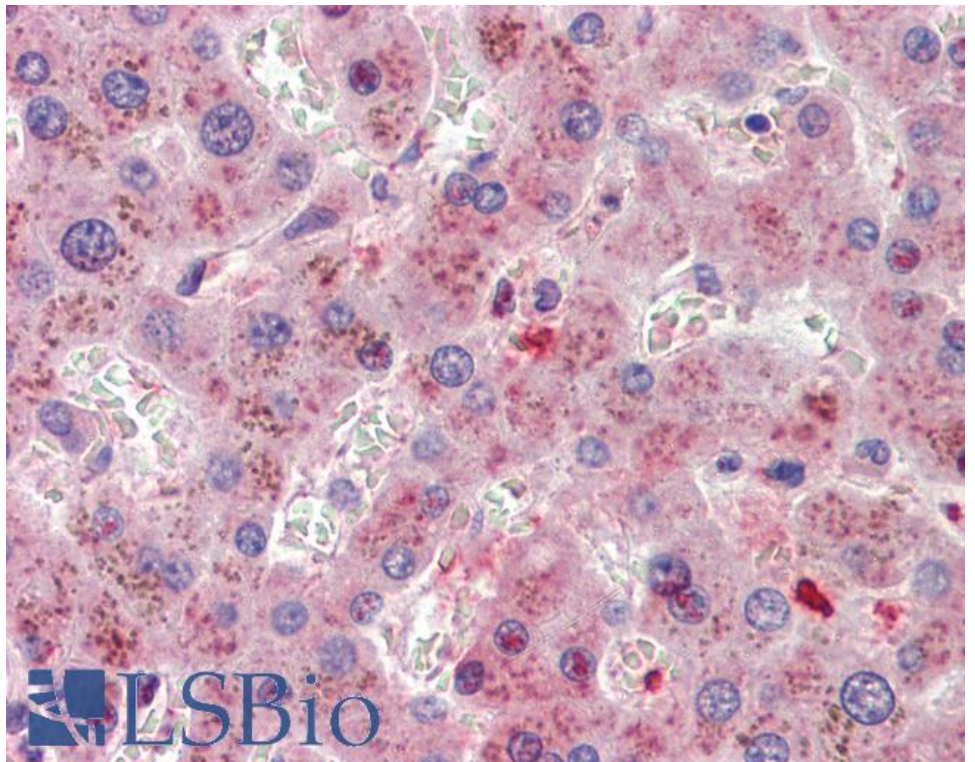
Species Reactivity

Tested: Human

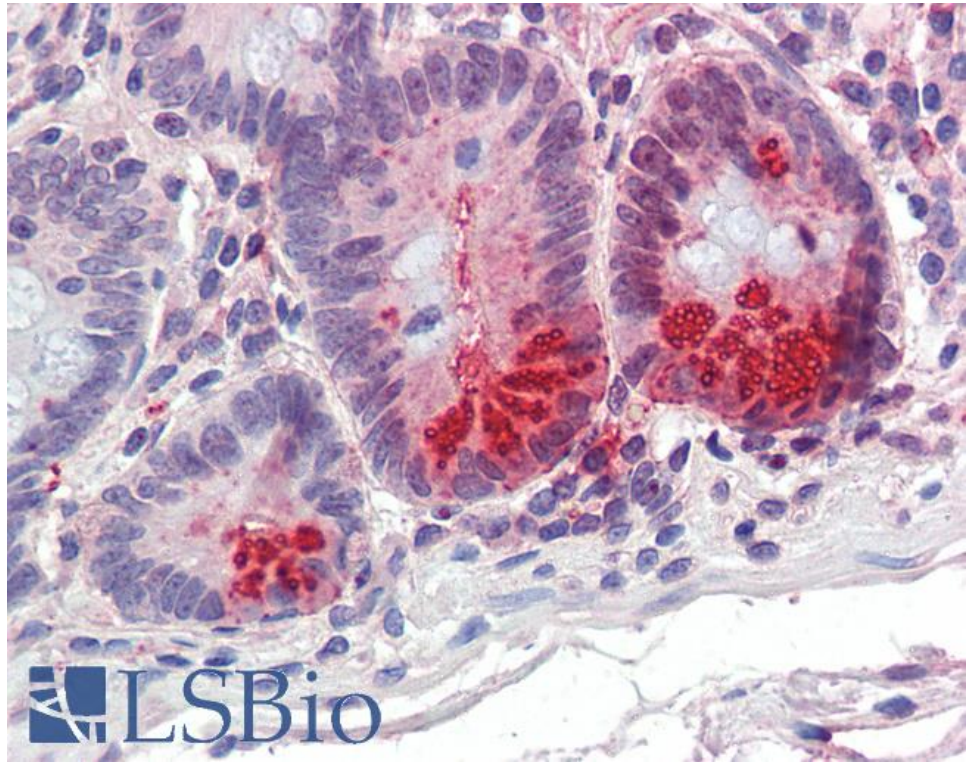
Expected from sequence similarity: Human



EB09209 (3.75µg/ml) staining of paraffin embedded Human Prostate. Steamed antigen retrieval with citrate buffer pH 6, AP-staining.



EB09209 (3.75µg/ml) staining of paraffin embedded Human Liver. Steamed antigen retrieval with citrate buffer pH 6, AP-staining.



EB09209 (3.75µg/ml) staining of paraffin embedded Human Small Intestine. Steamed antigen retrieval with citrate buffer pH 6, AP-staining.